

QUOTE

"A true friend is one soul in two bodies."  
Aristotle

# The Chelsea Standard

25¢  
per copy

ONE HUNDRED-SEVENTEENTH YEAR No. 13

CHELSEA, MICHIGAN, WEDNESDAY, AUGUST 27, 1986

20 Pages This Week



THE ORBITER, a new ride at the Chelsea Community Fair this year, has been called the "scariest ride" of the show. The ride belongs to the Crown Amusement Co. For \$7 a child, or adult, can ride this, and all the other rides, all day long.

## Community Fair Opens Despite Showers; Demo Derby Finishes Tonight

The 49th annual Chelsea Community Fair got off to a rough start as heavy rains muddled the fairgrounds and threatened to cancel many traditional opening-day events.

Fair board secretary Maryann Guenther reported that several parents had called Tuesday afternoon to check on the status of the Children's Parade. As of press time, the parade was scheduled to continue although it was still raining.

At any rate, the fair continues through Saturday at the fairgrounds.

The fair, which this year is dedicated to the memory of long-time fair worker and area farmer Harold Eisenman, is expected to draw more than 33,000 for the week.

Some of the most popular events of the week begin or continue today.

This evening is the second night of the Cavalcade of Thrills Demolition Derby. There will be three heats including the farm combine heat.

Two events highlight activities on Thursday. At 6:30 p.m. is a Mud Bog in the main arena. This event, new to the fair this year, has replaced the rodeo that had performed for several years.

The livestock auction begins promptly at 7 p.m. in the covered arena. Anyone is welcome to bid for cattle, sheep, or pigs.

Thursday morning's activities begin with an English performance horse show at 8, followed by antique tractor pulling at 9. Dairy cattle will be judged beginning at 10. In the afternoon, the Kiddies Paddle-Power Tractor Pull begins at 1.

Friday is a day for area women.

Registration for Ladies Day events begins at 8 a.m. and the program runs until noon.

This year's featured speaker is Constance Crump, restaurant reviewer for the Ann Arbor News.

Other events on the Ladies Day agenda include an information program on osteoporosis, featuring Dr. Martin Gleespan of the Village Professional Center, and "Elloise the Cow."

Nancy Dewar, a motivational speaker, will tell how she lost 110 pounds.

Tracey Lynne and the Mountain Express will give the first of two shows during Ladies Day. The band, which specializes in country and top-40 tunes, hails from South Lyon.

Ladies who register early will be eligible for free coffee and doughnuts. Every woman who registers will have a shot at one of the many door prizes from area merchants and businesses.

The evening's events will be highlighted by the crowning of the Chelsea Community Fair Queen during a show which begins at 7 p.m. in the multi-purpose arena.

Nine young women have entered the contest this year, including Dawn Spade, 16, sponsored by the Chelsea High school junior class; Kathryn Morgan, 17, of Rogers Corners Herdman 4-H Club; Lori Jedele, 16, of Chelsea McDonald's; Susan Schmunk, 16, of Chelsea Area Players; Debra Harshberger, 15, of the sophomore class; Michelle Kuhl, 17, of the senior class; Elizabeth Massey, 16, of Chelsea Chorus Baton Corps; Jennifer Bennett, 15, of Terrific Tailors 4-H Club; and Vicki Niethammer, 14, of the freshman class.

During Friday's show, each girl will perform her particular talent, and will be asked to respond to a question designed specifically for her. Julie Vorus is the mistress of ceremonies for the event.

Other events Friday include a Gynkama horse show at 9 a.m. and the lightweight tractor pulls, also at 9 a.m. Tractor pulling resumes at 7 p.m.

Saturday, the final day of the fair, is highlighted by the Chelsea Fair Parade at 1 p.m. down Main St.

On Saturday morning at 8 will be an Open Horse Show in the main arena.

Chelsea Family Practice Center and Chelsea Recreation Center are sponsoring a fun run beginning at 9 at the family practice center.

There are four races—a one-mile walk and one-mile run, a three-mile run and a five-mile run.

Registration the day of the race is \$8, which covers entry fees, the cost of a t-shirt, and eligibility for prize drawings after the races.

Also at 9 is a compact tractor pull.

After the fair parade, at 3 p.m., the area's best horseshoe pitchers will gather for their annual contest.

At 7 p.m. the 4-wheel drive speed pulling contest starts in the main arena.

The Livestock Sweepstakes Show takes place at 7:30 in the multi-purpose arena. Livestock Raffle Drawing closes the fair at 10 p.m.

## Storm Sewer Needs Major Work, Fahrner Tells Council

Calling the state of Chelsea's storm sewer system, "kind of a bleak picture," Assistant Village Manager Lee Fahrner gave a detailed presentation of the condition of the system at the village council meeting last Tuesday, Aug. 19.

Most of the problem, Fahrner said, occurs because the storm lines are simply too small to handle the volume of water during a heavy rain. There have been reports of flooding, water spilling up like small geysers and other assorted problems.

"We need to look at funding sources to do some major work," Fahrner said.

Village President Jerry Satterthwaite supported Fahrner, saying, "We need to find some big dollars."

Fahrner said the U.S. Environmental Protection Agency is trying to have the Clean Water Act amended as it pertains to storm sewer water quality.

The bad news is that will probably create a lot of additional paperwork," Fahrner said.

"The good news is they will probably attach some sort of funding support to it."

Fahrner said a major part of the problem is due to pipeline that is only about one half to one third of the size it should be, especially in the main line that runs under Federal Street Works on Main St. to Grant St. and north to Letts Creek. He said where there is 18" pipe there should be 42" pipe, 24" pipe should be replaced by 48" pipe, 36" pipe should be replaced by 96" pipe, and 42" pipe should be replaced by 102" pipe.

Fahrner said the small pipe creates pressure in the lines, causing water to burst through pipe and joints and up toward the ground surface.

The problems are aggravated by an overflow pipe between Middle St. and the railroad tracks that has been taken over by roots and is generally clogged up. Fahrner said the obstructions

(Continued on page six)



SUSAN SCHMUNK  
Chelsea Area Players



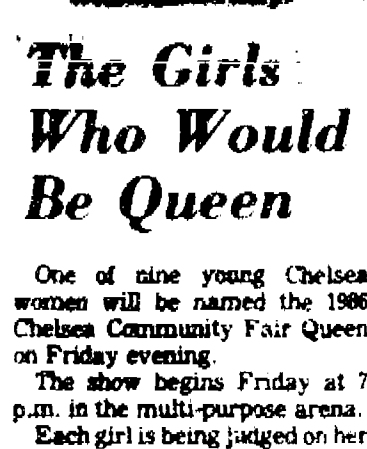
ELIZABETH MASSEY  
Chelsea Area Players



KATHRYN MORGAN  
Rogers Corners Herdman 4-H Club



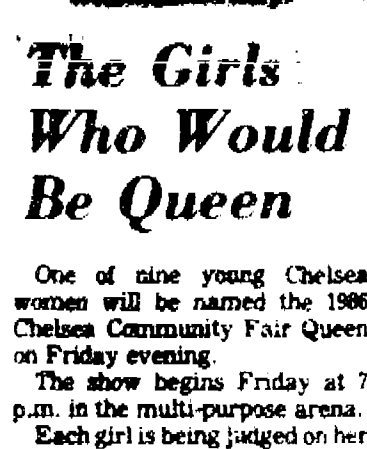
DEBRA HARSHBERGER  
Sophomore Class



DAWN SPADE  
Junior Class



MICHELLE KUHL  
Senior Class



JENNIFER BENNETT  
Terrific Tailors



LORI JEDELE  
Chelsea McDonald's



VICKI NIETHAMMER  
Freshman Class

### The Girls Who Would Be Queen

One of nine young Chelsea women will be named the 1986 Chelsea Community Fair Queen on Friday evening.

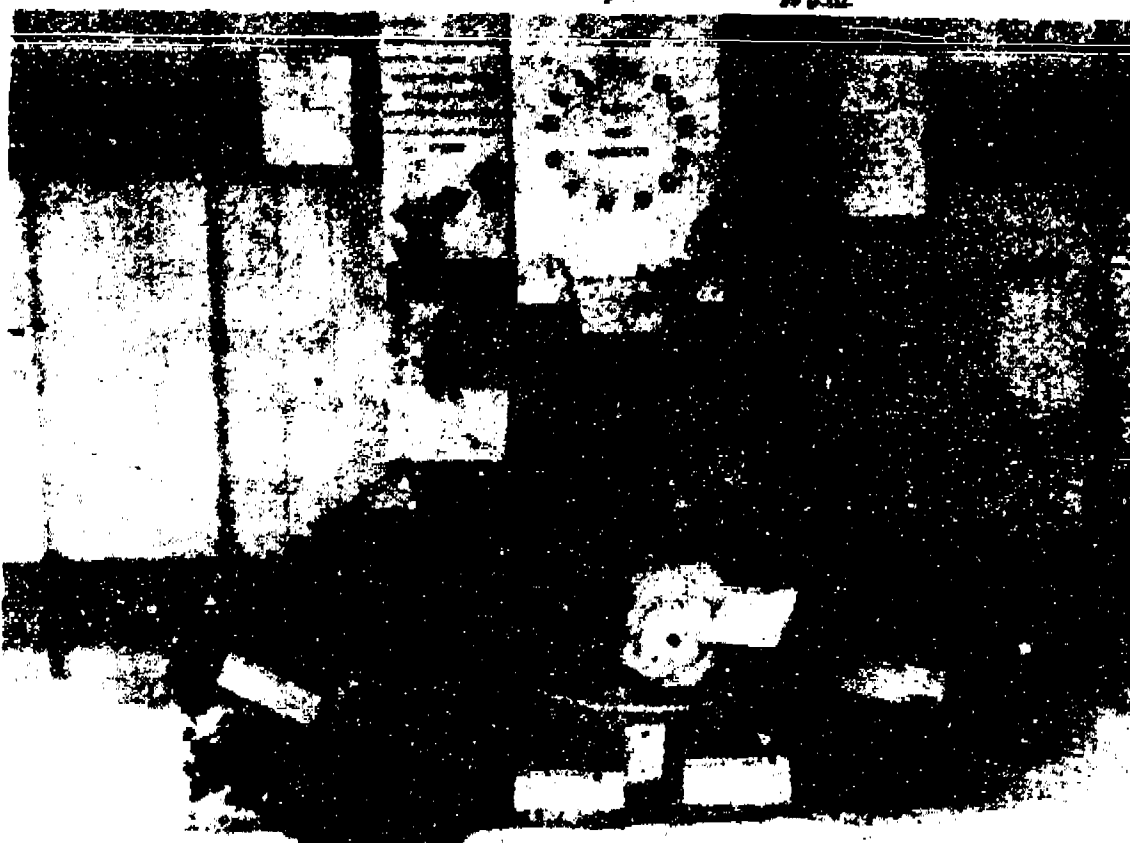
The show begins Friday at 7 p.m. in the multi-purpose arena. Each girl is being judged on her talent, a personal interview with the judges, which occurred earlier in the week, and her poise in front of a crowd. Friday's talent show is not a factor in the judging as the girls performed privately for the judges earlier this week.

Julie Vorus will be the mistress of ceremonies for the show.

Judges for contest include Jacqueline Hunter, of Jackson, Leonard Lafleur, of Ann Arbor, and David Lutchka, of Grass Lake. All have had extensive experience in judging similar events.

The nine candidates include Debra Harshberger, daughter of Robert and Charlotte Harshberger, 14007 McKinley Rd.; Susan Schmunk, daughter of

(Continued on page five)



ONE OF THE MOST UNUSUAL EXHIBITS in the agriculture display at the Chelsea Community Fair involves crops that are native to this country. Most vegetables we eat today were brought to this country by explorers and settlers. Included in the exhibit are potatoes, squash, pumpkin, tobacco

and pod corn. Pod corn grows on an ear but each kernel is encased in its own pod. Seeds used to grow the vegetables are true to the original vegetables. Seeds from each crop were saved for the next year's planting. The display belongs to Cindy Brackett of Fowlerville.

## School Begins September 3

School for Chelsea's children begins next Wednesday, Sept. 3, at 8:50 a.m. with a full day of classes.

Teachers and staff will report on Tuesday, Sept. 2. The morning will be devoted to individual building meetings and room preparations. In the afternoon, all teachers and secretaries will gather for a district-wide meeting beginning at 1:30 at Chelsea High school.

Parents of students who are new to the district should not wait until the first day of classes to contact the school.

Wednesday it will be business as usual at all schools. Lunch will be served and there will be regular bus route service both before and after school. Students should bring paper and a pen or pencil.

Students in high school vocational consortium classes will not begin those classes until Thursday, Sept. 4.



CHELSEA HIGH SCHOOL, CLASS OF 1981 held their 25th-year reunion Saturday, Aug. 16 at the Chrysler UAW Hall on M-52. 49 of the class of 97 attended the reunion. In the front row, from left, are Larry Kramer, Alvin Hemer Nixon, Ruth (Prestite) Hornung, Markella (Young) Long, Nadine (Lentz) Koch, Patricia (Worden) Hutton, Judy (Summers) Perry, Donna Sherman, Mary Ann (Sorenson) Balmer, Charlotte (Harris) Bentley, Diane (Holmes) Hall, Tom Dunlap, Ronald Walter, Alton O. Nixon. In the

middle row, from left, are Stanley Dyer, Charles Waller, John Bauer, Kathleen (Salsburg) Clark, Susan (Grossman) Urbanek, Janet (Bergman) Baku, Patricia (O'Neil) Roggenbuck, Judy (Martin) Irwin, Lana (Centilli) Leisinger, Marilyn (Pajot) Robinson, Linda (Burghardt) Kover, Carol (Cameron) Lauson, Dan Ellenwood, Kay (Rundelman) Saffron, Carol (Reddeman) Phee, Jill (Barkley) Dunlap, Michael Marsh. In the back row, from left, are Ned Heydlauff, Don Blalock, Larry Koch, John

Klink, Lynn (Slusser) Klink, Charles Koenn, Frances (Reed) Ferry, Francis (Joe) Laban, Robert Soller, Dan Mayer, Ed Brown, Peter Flintoff, Richard Wood, David Keezer. Not pictured who attended are Alice (Webb) Underhill, Sandra (Abel) Lemmon, Brian Leisinger and Alice (Klink) Wahl. Ed Lauson was unable to attend but saw classmates at his mother's home at 567 Glazier on Cavanaugh Lake Sunday, Aug. 24 from 2-4 p.m.

## The Chelsea Standard

Established 1871 Walter P. and Helen May Leonard, Publishers (313) 475-1371  
 Telephone 475-1371  
 300 N. Main St., Chelsea, Mich. 48118



Published every Wednesday at 300 N. Main St., Chelsea, Mich. 48118 and second class postage paid at Chelsea, Mich. 48118 under the Act of March 3, 1879. Postmaster: Send address changes to The Chelsea Standard, 300 N. Main St., Chelsea, Mich. 48118.

Subscription Rates (Payable in Advance)	
In Michigan:	Outside Michigan:
One year in advance \$28.00	One year in advance \$32.50
Six months \$16.50	Six months \$18.50
Single copies mailed \$ .50	Single copies mailed \$ .75

DEADLINES	
News Notices	Monday Noon
Display Advertising	Thursday 5 p.m.
Classified Advertising	Saturday Noon
Late Classified Ads	Monday Noon

OFFICE HOURS	
Monday-Friday	8:30-5:30 p.m.
Saturday	9:00-12 Noon

MEMBER  
**NATIONAL PAPER ASSOCIATION**  
 Association Founded 1865

National Advertising Representative  
 MICHIGAN NEWSPAPERS, INC.  
 827 N. Washington Ave.  
 Lansing, Mich. 48906

## JUST REMINISCING

Items taken from the files of The Chelsea Standard

## 4 Years Ago . . .

Tuesday, Aug. 24, 1982—

Before an overflow crowd of nearly 200 people the Dexter township zoning board rejected a proposed "keyhole" zoning ordinance. The proposed P-5 ordinance (Private Sites dedicated to common use) was submitted by a group of area lake associations as well as a number of lake residents. All expressed a collective concern for potential overcrowding and for the preservation of the lake lands and the quality of life the lake residents have become accustomed to.

The Chelsea Co-Op Nursery observed its 25th anniversary this spring. The nursery, which was begun in 1957 with 14 charter members, is located at 11000 Dexter-Chelsea Rd. "The Little Red Schoolhouse" was renamed after Florence Howlett, a long time Chelsea teacher, now deceased, who was born in 1867 and graduated from CHS in 1885. Originally a log cabin was built and a school house in 1954 by Lima township on the present co-op site. The first teacher for the nursery school was Mrs. Raymond Schaefer, 1957-1967, called "Miss Jane" by the children. Virginia Meyer (1967-1977), then Dottie Schaefer and Pam Zahn taught until 1980. Sherry Jones and Marsha Hansen are now teaching with two parents helping out during morning and afternoon classes.

For the second consecutive year Merle Sibley and Jim Daniels of Chelsea have won the Manchester Fair doubles horse-shoe pitching contest. The two give much of the credit for their double win to the fact they are

able to pitch year-round at the state's only indoor court, located in the basement of Foster's store here in Chelsea.

## 14 Years Ago . . .

Thursday, Aug. 24, 1972—

Fair queen for 1972 is Judi Blaess. Kwanis Club entrant. She and her court will be introduced Friday, Aug. 25 at the grandstand. Judi presented "Special Friends," a one-act play which she wrote about how sad it is to grow up. Ann Merkel, the junior class representative, was runner-up. Ann sang and played "Scarlet Ribbons" on the piano.

Tree of Life float entered by Froy, Carol, Durin, Valerie and Scott Hosier won a tie for first place in the mixed ages division of the Children's Parade, a float called "World" tied for first place with Carmen, Dawn, Dale, and Beck Scripser being pulled by a garden tractor driven by Mrs. Richard Scripser.

One hundred seventy-five Chelsea kindergartners will have a school all to themselves this fall as a result of the Board of Education's decision to lease four classrooms, the office, the gymnasium of St. Mary's school, and use of the playground.

Cheryl Trinkle is the owner of the 1972 Chelsea Community Fair. 1,025-lb. Grand Champion steer. She is the daughter of Mr. and Mrs. Charles Trinkle, 9970 Trinkle Rd.

Larry Hopkins, son of Mr. and Mrs. Jay Hopkins, 16970 M-52 owns the 950-lb. reserve champion steer.

## 24 Years Ago . . .

Thursday, Aug. 23, 1962—

Robert Taylor, head football coach, has announced that practice for all boys going out for the varsity team will begin Aug. 27. The Michigan High School Athletic Association now requires all boys playing football to wear mouth guards. These guards will be distributed at the time prospective players take their

(Continued on page four)

## WEATHER

For the Record . . .

	Max.	Min.	Record
Wednesday, Aug. 26	74	54	80/30
Thursday, Aug. 27	75	55	80/30
Friday, Aug. 28	76	56	81/31
Saturday, Aug. 29	77	57	82/32
Sunday, Aug. 30	78	58	83/33
Monday, Aug. 31	79	59	84/34
Tuesday, Sept. 1	80	60	85/35

## The Importance of Planning



It is only natural to put things off, but proper planning can spare a family traumatic decisions and financial burdens in the event of one's death. Pre-arranging a funeral may seem a difficult task, but there can be peace of mind for an individual who knows his or her wishes will be followed. For more information and guidance in funeral pre-arrangement . . . why not visit us or write for your FREE Pre-arrangement Booklet.

Please send me my copy of "My Specific Requests"

Name \_\_\_\_\_

Address \_\_\_\_\_

## Staffan-Mitchell

FUNERAL HOME

124 PARK ST.

PH. 475-1444



## MICHIGAN MIRROR

By William M. Harkins, Secretary, Michigan Press Association

## State Plans To Repay Unemployment Debt

Michigan will finish repaying its remaining \$1.2 billion federal unemployment loan debt in 1989 according to its original plan and schedule, even though it could repay the debt at the end of this year. The payment will be delayed in order to maintain enough reserves in the system to prevent the need for further loans in case the economy goes through a downturn. Department of Labor officials said recently.

The \$1.2 billion is what remains of federal loans that peaked at \$2.6 billion. Kay Penner, labor director of public information said. But those loans remaining are non-interest bearing loans, she said, while the state already repaid \$1.1 billion in interest-bearing loans.

Although \$300 million in interest-free loans have already been paid and it is anticipated the state will have the cash in hand to repay the outstanding balance, Penner said it is more fiscally prudent to repay the loan according to the current schedule.

Von Logan of the Michigan Employment Security Commission said if the economy remains in approximately the same condition, with unemployment at approximately the same rate, the state would have an unemployment reserve fund of about \$700 million in 1989 when the fiscal loans are repaid.

The state instituted a new series of unemployment taxes in 1982 to repay a mounting unemployment debt.

In 1982 the federal government also changed its policy on making unemployment loans to states, ending interest-free loans and charging interest on loans.

According to a report issued by the Economic Alliance of Michigan, the April 1985 repayment of interest-free loans

was 18 months ahead of schedule.

The report also found that total unemployment taxes paid by employers from 1983 through 1986 would total \$4.1 billion, \$1.1 billion less than the originally anticipated \$5.2 billion.

The report also said that jobless benefits paid for unemployed workers for the same three-year period would be \$2.1 billion less than the anticipated \$3.2 billion.

Logan also said unemployment benefits would be increased in January under provisions indexing benefits to the state's average weekly wage.

The current maximum benefit is \$197 a week, and Logan said that will be at least \$220 beginning in January.

The maximum unemployment payments will be 53 percent of the state's average weekly wage, and that percentage will be increased until 1989 when payments will be 58 percent, he said.

Logan added the \$220 a week figure was based on all percent of the 1985 average weekly wage of \$416.

The 1986 average weekly wage—which will not be determined until January—will probably be as much as 4 percent above the 1985 average, he said.

## Nuclear Decommissioning Agreement Goes To PSC

A proposal to establish \$450 million in trust funds to decommission nuclear power plants is ready for Public Service Commission consideration, with an agreement reached after year-long negotiations between the PSC staff, utilities and other parties.

If the PSC adopts the agreement, which would raise customer bills at four utilities by 10 cents per month, it would later have to apply the provision

specifically to each nuclear facility.

The surcharge on customers would raise about \$12.5 million a year for Detroit Edison's Fermi II plant in which Wolverine Electric Co-operative has a part interest. Consumers Power Palisades and Big Rock plants and Indiana and Michigan's two-unit Cook facility.

The funds are to be deposited in trust accounts outside the utilities' normal operations, with expected earnings of about 8 percent annually.

The PSC in 1980 rejected a proposal from the utilities for \$1 billion in internal accounts, and nothing further was done about the procedure until last year when federal changes permitted tax credits for payments to external funds.

The agreement calls for the surcharges to begin Jan. 1, 1987 in preparation for decommissioning the first plant, probably Big Rock, no later than 1992. The plan assumes the costs for the plant, to decontaminate the radioactive equipment and restore the site, would be \$60 million. Assumptions for the other plants are \$100 million each.

## Fire Dept. Has 46 Runs

Chelsea Fire Department made 46 runs in July, up nine runs from the same month last year, according to the monthly report submitted by fire chief Bud Harkner.

Village of Chelsea had the highest number of runs at 11, followed by London township with nine, Lima township with eight, Sylvan township with seven, Dexter township with six, Mutualaid with four, and Freedom township with one.

Medical emergencies accounted for 17 runs, and personal injuries, 12. Other runs were made for a variety of reasons, including washdowns, grass fires and appliance fires.

Firefighters spent a total of 651 hours on runs for the month.

Standard Classifieds Get Quick Results

## REGISTER NOW! BATON TWIRLING LESSONS CHELSEA BATON CORPS

## BEGINNER CLASS STARTS WEEK OF SEPT. 8

at North School Gym

\$50 for 12-week term

Reduction for siblings  
 Ages 3-16, Boys and Girls

Beginner classes taught by student teachers under the direction of Rita Wilson-Howard.

For further information and registration

CALL  
 MRS. WYNN  
 475-7150



## Dayspring Gifts

Can You Believe It?

I Print

FREE

COLOR GUARD II FILM DEVELOPING

2 PRINTS from every negative



Visit our Photo Counter today for full details!

Dayspring Gifts

1145 Main, Chelsea PH. 475-7501

HOURS: 9:30-5:30 daily Mon. & Fri. 10-8:30

## YOUR TIME IS HERE.



The time is right for taking a new step. Washenaw Community College. Registration for fall classes is under way now through August 25. We have more than 50 career programs and a variety of general education courses, many of which transfer to four-year schools.

We also make college courses available offering courses at night, a few on Saturdays, and we have a day child.

care for children on campus. We can help make college affordable, too, thanks to reasonable tuition rates and a full service financial aid office.

Get the information on Sept. 8-9 for daily registration hours. For tomorrow, start today at Washenaw Community College.

Washenaw Community College  
 4800 E. Huron River Drive P.O. Box D-1  
 Ann Arbor, MI 48106

Washenaw Community College  
 4800 East Huron River Drive  
 Ann Arbor, MI 48106  
 973-3548





## Luick-Keyes Engagement Told

Mr. and Mrs. James F. Hoffmeyer of Chelsea have announced the engagement of their daughter, Diane Marie Luick to Brian A. Keyes, son of Jane Law of Herkimer, N. Y., and Warren Keyes of San Jose, Calif.

The bride-elect is a 1978 graduate of Chelsea High School and Michigan State University. She is director of sales of the Embassy Suites Hotel in Palm Desert, Calif. Her fiancé is a graduate of Herkimer High School in Herkimer, N. Y., and is specialty restaurant manager of The Velvet Turtle Restaurant in Palm Desert, Calif.

An Oct. 25 wedding is planned.

A SURPRISE PARTY was held Sunday Aug. 24 for Mrs. Garnett (Marguerite) Weir, who celebrated her 75th birthday. The party was held by her daughters Mrs. Floyd (Jackie) Riehmiller and Mrs. Eugene (Mary) Alber at the Alber home. The Albers recently moved back to Chelsea from Milan. More than 40 friends and family came from all over Michigan to celebrate with a picnic.

The Job Training Partnership Act was enacted into law in October 1982 and became fully operational in October 1983, according to the U. S. Department of Labor's annual report for fiscal year 1986. The law is administered by the Labor Department's Employment and Training Administration.

## Workshop Set on Making Jams, Jellies

Gardens are full and produce is overflowing at the farmer's markets so this is the time to preserve food for later. It is important to use the latest fail-safe methods when you can or freeze, pickle or make jam. Health, time, money and your labor are all involved.

Don't let your hard work go to waste: learn the newest methods of food preservation at the public demonstration-lecture sponsored by the Co-operative Extension Service.

Information on making jams and jellies will be presented by Home Extension Agent Marion Prince on Aug. 26, at the County Service Center, 4133 Hogback Rd., at 7:30 p.m. Reservations are required; call 975-5510. A \$2 fee will be collected at the door.



MINA MOECKEL

## Mina Moeckel Celebrates Her 100th Birthday

Mrs. Mina Moeckel was guest of honor at a pot-luck dinner and Open House at the Township Hall in the village of Waterloo, Sunday, Aug. 17.

Friends, neighbors and relatives gathered to honor her for a very special occasion, her 100th birthday. Gathered for the dinner were 100 people, with many others arriving for the Open House.

This was the second birthday celebration at which Mrs. Moeckel was honored, the first was held on her birthday, July 27, at Calvary church in Jackson.

Mrs. Moeckel is a long-time resident of Waterloo.

She and her husband Ezra and daughter Odema lived on the

Ahling farm on Timms Rd., near Grass Lake, from 1916 to 1922.

They lived in Lima for a year before moving in 1924 to the farm on Gorton Rd. in Waterloo.

The farm continued to be their residence until her husband's death in 1950.

He died in March. The following December, she and Odema moved to 621 Dewey St., Jackson, where they now reside.

Mina was born on July 27, 1886, to Clement and Mary Huttenlocher Barber, living at the time on the Lyndon township farm of her grandparents.

She remembers moving by horse and wagon across the country line to their home on Gorton Rd. when she was about four years old.

Mr. and Mrs. Ezra Moeckel were married Dec. 7, 1910.

They had been married almost 40 years at the time of his death.

Mrs. Moeckel and Odema retained half an acre of land when the farm was sold, and have a small house located on the land—they came out often.

They have had this place for about 30 years, and Mina loves her garden and flowers.

Mina (as everyone calls her) has continued to work outside among the flowers and in her garden.

She takes great pride in her home at Waterloo.

On June 6, she planted beans and potatoes.

That night, she fell and fractured her hip.

She has recovered from the injury, although she sometimes uses a walker.

Her greatest regret is she can't move about as she once did.

She is looking forward to, and planning to get out in her pride and joy—her garden—to help work the earth, plant and harvest her crops.

## Hospice Volunteer Training Scheduled

Hospice of Washtenaw, a division of Amicare Home Health Services, Ann Arbor, Inc., a non-profit health care agency, trains and utilizes volunteers in the care of the terminally ill and their families. Volunteers serve families in a variety of ways—through supportive counseling, friendly visiting, health care education, light household chores and errand assistance. Other volunteers assist in office operations, publicity, and public speaking. It is not necessary to have a background in health care to be a hospice volunteer.

Volunteer training will begin Sept. 8th. For more information, please call 986-1995.

**SOUNDINGS**

A non-profit Center for Women

**YES! YOU CAN!**

- Build self-confidence
- Overcome fears
- Find a job

If you are a separated, divorced, widowed woman

**CALL 665-2606**

JOIN OUR NEXT JOB PREPARATION PROGRAM

Beginning Sept. 9

## Senior Citizen Activities

Weeks of Aug. 27-Sept. 3

### MENU

Wednesday, Aug. 27—Sweet and sour ribs, oriental vegetables, orange-apricot Jell-O salad, bread and butter, dessert, milk.

Thursday, Aug. 28—Italian meatballs, Italian rice, tossed salad, bread and butter, fresh fruit, milk.

Friday, Aug. 29—Chefs salad bowl (turkey, cheese, tomato, hard-cooked eggs), strawberries in Jell-O, French bread, cantaloupe, milk.

Monday, Sept. 1—Labor Day, senior site closed.

Tuesday, Sept. 2—Beef pasties, gravy, peas and carrots, lettuce & tomato salad, fresh fruit, milk.

Wednesday, Sept. 3—Vegetable soup, cottage cheese, fruit (peach, pineapple, prunes), muffins, fruit juice, cookies, milk.

### ACTIVITIES

Wednesday, Aug. 27—

9:30 a.m.—Cards.

9:30 a.m.—Needlework.

10:00 a.m.—Ceramics.

1:00 p.m.—Fitness.

1:00 p.m.—Bowling.

Thursday, Aug. 28—

No square dancing until Sept. 4.

9:30 a.m.—Cards.

9:30 a.m.—Needlework.

9:30 a.m. & 1:00 p.m.—

Needlework.

1:00 p.m.—Kitchen Band.

2:00 p.m.—Walking.

Friday, Aug. 29—

9:30 a.m.—Cards.

9:30 a.m.—Needlework.

10:30 a.m.—Progressive euchre tournament.

Monday, Sept. 1—

Labor Day, senior site closed.

Tuesday, Sept. 2—

9:30 a.m.—Cards.

9:30 a.m.—Needlework.

9:30 a.m.—Art class.

1:00 p.m.—Euchre.

Wednesday, Sept. 3—

9:30 a.m.—Cards.

9:30 a.m.—Needlework.

10:00 a.m.—Ceramics.

1:00 p.m.—Fitness.

1:00 p.m.—Bowling.

## Dial-A-Garden Topics Listed

The following is a schedule of Dial-A-Garden, the system of pre-recorded daily gardening tips sponsored by the Washtenaw County Co-operative Extension Service.

The system is in operation 24 hours per day, 7 days per week.

Interested persons are invited to call 971-1122 at their convenience and receive timely, up-to-date gardening information.

Topics for the next week are as follows:

Wednesday, Aug. 27—"Bring Houseplants Back Indoors."

Thursday, Aug. 28—"Soil Sampling."

Friday, Aug. 29—"Digging and Storing Summer Bulbs."

Monday, Sept. 1—"Christmas Flowering Plants."

Tuesday, Sept. 2—"Planting Hardy Bulbs."

Wednesday, Sept. 3—"Tulip Varieties."

Standard Want Ads  
Get Quick Results!

## CAROL'S CUTS

40 CHESTNUT

Monday, Wednesday and Friday

475-7094

By Appointment Only  
9:00 a.m. - 3:00 p.m.

The Chelsea Standard, Wednesday, August 27, 1986

## O'Connor Calls for End To 'Pork Barrel' Budget

With state spending getting more out of control every year, State Rep. Margaret O'Connor (R-Ann Arbor) said that lawmakers need to start voting against budgets loaded with items that cannot be justified.

O'Connor said the 1986-87 Department of Agriculture budget is a particularly good example of how the appropriations process has become a pork barrel for special interest groups.

"It was with great reluctance that I voted 'no' on the agriculture budget," O'Connor said. "I tried several times to amend the budget and clean out the garbage that had been dropped into it, but the opposition was too strong. Farmers from the 52nd District told me to vote against the bill."

The 52nd District lawmaker said that \$2.45 million of the agriculture budget went towards cities with race tracks and another \$800,000 was included as a subsidy for the Pontiac Silverdome.

"These two items alone cost more than \$3 million and I fail to see what good either of these will do for the farmers of this state," O'Connor said.

A Senate Fiscal Agency report said that the Silverdome is currently showing a profit and would be expected to continue to do so if state funding was discontinued.

O'Connor said there is no legal reason that the legislature must appropriate

any funds to the Silverdome. That money should be used to help Michigan farmers," she said.

Other appropriations in the agriculture budget included \$106,000 to operate a farm in China, and more than \$105,000 for an orchard eradication program on privately owned orchards and vineyards.

"When farmers want to remove a tree or a vine they should grab a saw and do it themselves. The taxpayers shouldn't foot the bill."

"I also question why we need to be involved in helping the Chinese. Local people ask me why we're helping a foreign country compete against American farmers that need help."

O'Connor said that the agriculture budget was one of many spending plans that contained "intolerably frivolous expenditures."

"Government should not fund items that can be handled by the private sector. We continue to demonstrate fiscal irresponsibility and someone needs to put a stop to it," O'Connor concluded.

Sixty-one percent of women maintaining families in 1985 were in the labor force—that is working or looking for work—compared with 54 percent in 1975, according to a fact sheet on working women published by the Women's Bureau of the U.S. Department of Labor.

## BACK-TO-SCHOOL SPECIALS

- 120-count Theme Books . . . . . 75¢
- 70-count Theme Books . . . . . 50¢
- 200-count Filler Paper . . . . . \$1.00
- 10-count pac pencils . . . . . 65¢
- Pocket Portfolios . . . . . 20¢
- Trapper Binders . . . . . \$4.25
- Flex-3 Binders . . . . . \$4.25

## CHELSEA OFFICE SUPPLY

116 S. Main Ph. 475-3339 or 475-3342  
Mon.-Fri. 9:30-5:30 Sat. 9:30-4:00

## Dayspring Gifts FAIR SPECIAL

CLIP THIS COUPON

**20% Off**

Any one item in stock of your choice\*

WITH THIS COUPON

Off: good Aug. 27 thru Aug. 30, 1986 at Dayspring Gifts

\*except Huggies and items already marked down. No cash awards on this sale.

## Dayspring Gifts

116 S. Main St., Chelsea Ph. 475-7501  
Open Mon. & Fri. Until 8:30

LAST WEEK TO  
SAVE 15% to 50%  
ON THE FURNISHINGS  
AND FLOORING OF YOUR CHOICE

Merkel

FURNITURE & CARPET  
MAIN STREET IN CHELSEA  
Phone 475-8621 or 1-800-482-3650

USE YOUR VISA OR MASTERCARD  
OPEN MONDAY AND THURSDAY UNTIL 8:30 P.M.

## Her Seiko Career Quartz. Poised for success.

For all their gold-tone grace, these Seiko designs exude a confidence that's sure to be noted. Consider whether you want the Oval, Circle or Sculptured Square. Luxurious gold-tone cases, gift dials and leather straps.

EAR PIERCING  
FREE  
WINANS  
JEWELRY



You get the best of Seiko when you see this sign.

SEIKO  
KINERGETIC

## Dogs Disappearing From Lyndon Area

Dogs have been disappearing on and around Boyce Rd., and area resident Joy Franklin thinks it's no accident.

Franklin, who lives at 10861 Boyce Rd., had all three of her 10-month-old mixed breed dogs disappear at the same time between 10 p.m. last Friday and 5 a.m. Saturday. All three dogs came from the same litter.

She said no one in the area has seen them and no bodies were found.

The Franklins also lost two dogs earlier this year, one on Saturday, March 7, and the other on Saturday, March 21. Joy became suspicious when she realized the dogs all disappeared either late Friday night or early Saturday morning.

"We drove all over, and there was no sign of them," Joy said.

Joy has checked several times at the Huron Valley Humane Society, with no luck. Officials at the society suggested the dogs might have been picked up. Joy

speculates that an unscrupulous laboratory is using the dogs for research purposes.

Joy's dogs aren't the only ones in the area that have turned up missing.

Recently, a mixed breed puppy belonging to Bonnie Howard, also a Boyce Rd. resident, disappeared under much the same circumstances early on a Saturday morning.

All the missing dogs have had similar characteristics, according to both Joy and Bonnie. They've all been fairly young, mixed breeds, small to medium-sized. They've all been friendly family pet dogs that were not afraid of strangers.

"This has been very distressing to my kids," Joy said.

Anyone outside the Chelsea village limits who has a dog disappear without a trace should contact the Washtenaw County Sheriff's Department.

## Hospital Offers Sunday Brunch

Chelsea Community Hospital will offer its monthly brunch to the entire community on Sunday, Aug. 31, from 11:30 a.m. to 2 p.m.

Brunch selections will include a full breakfast menu, steamship round of beef, stuffed chicken breast, fish nuggets, eggs benedict, wild rice, whipped potatoes, salad bar, bagels, muffins, toast, fruit compote, special gourmet cakes, pumpkin pie, banana split torte, and more. Advance reservations are not required.

This enjoyable Sunday Brunch is served in the hospital's main dining room, walled by full-length windows giving a beautiful view of the wooded landscape.

Chelsea Community Hospital's Brunch will only be offered through the month of October, don't miss this opportunity!

For more information call the hospital at 475-1311, extension 301.

**Please Notify Us In Advance of Any Change in Address**



GERALDINE AND FRED KLINE, SR., seated, celebrated their 10th wedding anniversary on Friday, Aug. 22. The Klines have 10 children, nine of whom live in the Chelsea area. Their children,

from left, are Garry, Father Whitaker, David, Mary Ann Wahl, Fred, Jr., Donna Payne, John, George, Alice Wahl and Philip.

## WEIGHT LOSS THROUGH HYPNOSIS

Smoking Withdrawal - Stress Management  
Improving Confidence-Treatment of Insomnia  
Phobias - Rapid, Relaxing, Pleasant



**THE JACKSON HYPNOSIS CLINIC, INC.**

569 Wildwood Ave. Jackson 787 5904

## YOU NEED A SPINAL EXAMINATION

If You Experience Any One Of These 12 DANGER SIGNALS Indicating PINCHED NERVES:

1. Headaches
2. Dizziness
3. Neck Pain
4. Muscle Spasms
5. Shoulder Pain
6. Pain Down Arms
7. Numbness in Hands
8. Pain Between Shoulders
9. Lower Back Pain
10. Hip Pain
11. Pain Down Legs
12. Foot Problems



DR. W. ATKINSON  
DIRECTOR

Millions of Americans have spine-related problems which will respond to Chiropractic care.

We encourage you to find out if you have a problem that could be helped by Chiropractic care. We accept, as new patients, only those we sincerely believe we can help.

Our Chiropractic evaluation includes standard orthopedic and neurological test procedures.

**Our Fee Policy**

### WE ACCEPT INSURANCE

Our modern business office simplifies your insurance paperwork and allows us to treat your condition at little or no cost to you.



**ATKINSON CHIROPRACTIC CLINIC**

7970 CLARK LAKE RD. (at M-52) CHELSEA  
PHONE FOR APPOINTMENT: 313-475-8669

# SUNDAY BRUNCH

CHELSEA COMMUNITY HOSPITAL

Main Dining Room

**Sunday, August 31, 1986**

Adults \$4.00 Children \$3.00

### FULL BREAKFAST MENU:

ENTREES: Steamship Round of Beef, Stuffed Chicken Breast, Fish Nuggets, Eggs Benedict, Chicken Noodle Soup, Whipped Potatoes, Wild Rice, Peas with Mushrooms, French Toast, Bacon, Sausage, Bagels, Muffins, and Toast, Fruit Compote, Salad Bar, Special Gourmet Cakes, Pumpkin Pie, Banana Split Torte.

**Free Parking! No Reservations Necessary!**

For more information call 475-1311, Ext. 361

## JUST REMINISCING

Items taken from the files of The Chelsea Standard

### 24 Years Ago...

Continued from page two: physical examination and local dentists will fit the guards individually. For those who need to take out football insurance, the cost will be \$5.

Chelsea Motors, located on Manchester Rd. just north of I-94, is holding a grand opening next week with free wash loads, gifts and coffee for customers who attend the opening.

Some of the highlights of the opening day of the Chelsea Community Fair at the fairgrounds are a children's balloon scramble, greased pig climb for boys, wheelbarrow race and three-legged race for girls. Bands concert will be performed by the (C.H.S.) band in the evening. Thursday features are the fall stock sale, a pig scramble for boys, a band concert at 9 p.m. by the Waterloo Band and introduction of all Fair queen candidates.

The appointment of William E. Herrington, Jr. to the position of general sales manager of the Chelsea Division of the Dana Corp. has been announced by Robert Wagner, Chelsea Division general manager.

### 34 Years Ago...

Thursday, Aug. 28, 1952 - Including the new, 30-passenger GMC bus, the Chelsea Agricultural Schools district now has a fleet of seven buses and a station wagon.

Sept. 4, following the custom of

## Final Work Bee Involves Board

The final work bee before the opening of the 1986 Chelsea Community Fair highlighted the fair board meeting on Thursday, Aug. 21.

The meeting had the best attendance since November. Participating in the work bee were Bill Stoffer, president; Jerry Herrick, vice-president; Lloyd Grau, executive vice-president; Maryann Guenther, secretary; and Mark Stupish, treasurer. Directors who participated included Archie Bradbury, Richard Bollinger, Jim Dault, Tom Dault, Harold Gross, Jerry Heydlauff, John Klink, Charlie Koenn, Jeff Layher, Mark Lesser, Reuben Lesser, Jr., Ralph McCalla, Harold Trinkle, Ed Whitaker, Don Koenigster, and John Wellnitz, reporter. Absent were Earl Heller and Joe Merkel III.

After the work bee a short meeting was called to order by Stoffer.

Reports were read and accepted, and bills were paid. Fast minute action for the fair were read.

## FRANK GROS CHEVROLET BODY SHOP

7130 DEXTER RD. DEXTER

**New Expanded Facility**

FREE ESTIMATES

WE DO:  
- Rust Repair  
- Corrosion  
- Insurance  
- Complete Paint  
- Frame Work

426-4677

## BUY - SELL - TRADE NEW AND USED

• GUITARS Authorized Gibson dealer

• WIND INSTRUMENTS

**J & L MUSIC**

121 W. Main St.  
Stoughton, MA  
Ph. (517) 851-7383

Hours:  
M-F 10 a.m. - 6 p.m.  
Sat. 10:30 - 6:30

**TRY BEFORE YOU BUY**

The Chelsea Hearing Aid Centre offers its hearing aid customers a one month free trial and no charge follow up office service during and after the 30-day period.



## CHELSEA HEARING AID CENTRE

• Hearing Aids • Batteries • Accessories •

55 Chestnut Dr. • Suite A

313-475-9109 Chelsea, Mich.

Telephone Secretary 668-4400

We are your Hearing Director

Open Saturday, 8:30 to 2:00. Evenings by Appointment

We accept third party billing

## A New Look for the New School Year



**\$5.00 OFF PERM SPECIAL**

From Aug. 21 to Sept. 8

- ★ ALL AGES WELCOME—COUPON NECESSARY
- ★ UP TO DATE WITH THE LATEST STYLES
- ★ DON'T FORGET KIDS DAY—THURSDAY—HAIRCUTS \$5.00

**\$5.00 off**

ANY REGULAR PERM

Don't be shy!

**Gemini**

FAMILY HAIR CARE

107 W. MIDDLE ST., CHELSEA

**475-7006**

Get into the school spirit!



# A VIEW from the CLOCK TOWER

By Will Connelly

Readers and listeners are especially grieved when they hear that a young person 15 to 24 years of age has killed the whole world by committing suicide. Yet, as we shall see later in this column, adolescence and college students are not the only group who have our best chance for suicide prevention. The other group who may be insured at the opposite end of the age scale, those 65 or older.

First let's begin with a view of the whole picture. The year we have chosen is 1981 because that is the latest year published in the Statistical Abstract of the U.S. on suicides. Here are the figures for that year when nearly 21,000 suicides were recorded out of two million attempts.

## SUICIDE DEATHS PER 100,000 PEOPLE

	White males by age	White females by age
15-24 years	21.1	4.9
25-34 years	26.2	9.5
35-44 years	24.3	9.5
45-54 years	24.9	11.1
55-64 years	26.3	9.4
65 and older	35.7	6.3

Suicide rates for black people of each sex are roughly half the rates for white people. Obviously, we could write a whole book on these differences between races, sexes and ages but we'll leave details to the experts.

There is a popular notion that suicides by students are the result of broken love affairs, but such tragedies are rare. What investigators have found is that students who are doing poorly in their studies feel a loss of parental love. Suicidal Asian students reflect the same emotions — "loss of face" with parents and families.

In Herbert Hendin, a psychiatrist with the VA, does not attribute the increasing suicides of students to social changes such as the advent of the sixties or emerging drug culture of the seventies. He feels that increased suicide attempts among collegians are rooted in the loss of family cohesion.

Parents who are close to their children will not fail to see the signs of depression and self-contempt which so often lead to rebellion and withdrawal. Mothers and fathers recognize the tendency of trying to "out-think" John or Susan, a professional counselor. Counselors have their valuable roles but in the end, victory over despair and self-condemnation is most likely to come from the wisdom of the family. Above all, children — just like the rest of us — want to believe that they are needed.

Often a good starting point is for the parent of a deeply depressed youngster to go first to a counselor and go alone. If parents and child are estranged, a sibling or other family member may seek the guidance instead. The goal is to rebuild the youngster's feeling that he or she is loved, appreciated and needed.

Throughout America the ratio of attempted suicides to actual suicides is about 10 to 1. Among youngsters, the ratio averages 100 to 1 or higher, while among persons over 65, the average is estimated at 3 to 1.

Every "failed" attempt at suicide is a cry for help. In thousands of cases a deliberate failure is a way of dramatizing the desperate need for help.

In the decades between ages 25 and 65, suicidal despondency may be concealed until too late. There are job failures, frustrated ambitions, marital tragedies, normal and abnormal sexual problems. Total despair often follows the death of a marriage partner, child, parent, sibling or beloved friend.

Other strong impulses toward self-destruction, repeatedly emphasized by experts on suicide, are homosexuality, alcoholism and drug addiction. Many homosexuals feel themselves outcasts in the heterosexual society. Alcoholics and drug addicts do shameful things that bring them into unbearable disgrace. Many kill themselves with huge amounts of booze consumed within a short period of time; drug addicts take the same way out with lethal overdoses.

In 1981, 63 percent of all people who killed themselves did it with firearms, while 14 percent chose poisons and an equal number did it by hanging.

Almost automatically, self-destruction in the U.S.A. raises the question of suicide in other countries. Here are rates per 100,000 male suicides during years centering around 1981 in 15 developed countries:

Austria	42.1	Poland	21.8
Denmark	38.9	Norway	19.1
Switzerland	33.6	U.S.A.	18.0
West Germany	29.6	Israel	9.8
France	28.5	United Kingdom	9.1
Sweden	24.6	Ireland	6.6
Japan	22.0		

In eight countries where firearms are limited or prohibited, the suicide rate is higher than in the U.S. In exceptional Switzerland, every able-bodied man between ages 20 and 50 belongs to the militia and keeps his gun at home.)

## THE ELDERLY

It is not surprising that we have a high rate of mortality from all causes as people reach their retirement years. While most older people die from natural causes, there is also a 33.5 suicide rate per 100,000 among our citizens 65 or older (all ages and both sexes).

Since 1920 our life expectancy has increased by 20 years, but health care cannot prevent a high incidence of illness and depression among the elderly. After long use, their bodies are wearing out. Many are frail and infirm. Spouses and friends are becoming fewer, followed by loneliness and the feeling of being unwanted and not needed. There is also the new dread among many that they will become comatose human vegetables in intensive care wards.

Nevertheless, the suicide rate for the elderly is far too high and an indifferent society is to blame. Too many younger people think of Old Uncle Ned or Old Nell, shake their heads a second, and turn on the TV.

Elderly suicides occur nationally at high rates, but there are some islands of community care such as Chelsea.

We have our Senior Citizens who are strongly supported by the schools and a host of local organizations. We have the CATS buses that provide door-to-door pickup and delivery.

We have our Chelsea United Methodist Retirement Home. Hot meals for personal delivery to oldsters are cooked in its kitchen. Personal living quarters of its residents are made honey with their own belongings. Aided by the Civic Foundation of Chelsea, Wesley Hall, within the Home is a sanctuary for victims of Alzheimer's disease. There these patients live among staff members who call them by their first names, hug them and warmly tell them, "I love you, dear."

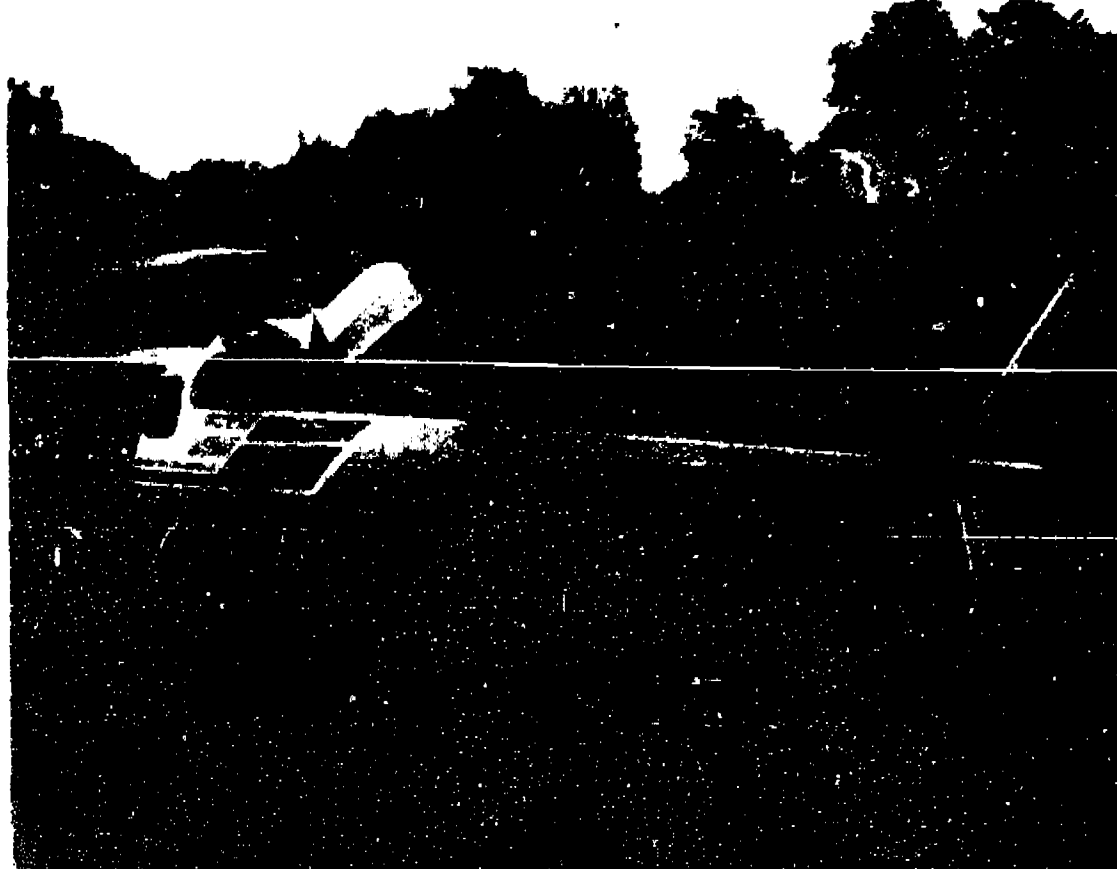
More love, more being wanted and needed, flows from Chelsea United Way, our Community Hospital and our churches. Chelsea is a good town to live in.

**Tell Them You Read It In The Standard**



**SURVIVAL FLIGHT HELICOPTER** crew of the University of Michigan Hospital gave a demonstration of the unit's capabilities at Saturday's Youth Appreciation Day at Chelsea Lanes. It was one of many safety programs put on free of charge for area youths. In the front row, from left,

are pilot Dean Pade, flight nurse Deborah Stoll, Melissa Sprague, Ed, the national mascot of the Young American Bowling Alliance, Sarah Martell, Amy Oake, Heather Greenleaf and Brandon Young. In the back row, from left, are Felicia Hermosillo, Fernando Hermosillo and Andy Thomson.



**EMERGENCY LANDING** was made by this helicopter last Saturday afternoon off Dale St. after it was used to demonstrate the University of

Michigan's Survival Flight program at Youth Appreciation Day last Saturday. No one was hurt in the accident.

## Helicopter Makes Emergency Landing

A helicopter was forced to make an emergency landing in a field off Dale St. last Saturday after an engine exploded shortly after take-off.

The helicopter was being used to demonstrate the University of Michigan's survival flight operation at Youth Appreciation Day at Chelsea Lanes. After the demonstration, the helicopter took off to return to Ann Arbor when the incident occurred.

According to police, the helicopter was about 400 feet off the ground when there was an explosion followed by black smoke billowing from the engine. They said the pilot then turned the engine off and glided to safety.

No one was hurt in the accident and the helicopter was not damaged other than the blown engine, according to police.

## Senate Approves Expansion of Ag Export Bonus Program

The U.S. Senate recently approved a temporary expansion of the agricultural export bonus program, and Al Almy, director of public affairs for the Michigan Farm Bureau, says that if the provision becomes law, it should help boost the sale of U.S. farm products overseas.

"What this does is open up the export bonus program market to countries that we previously were not able to offer it to," Almy said.

Pilot of the helicopter was Dean Pade, 36, of Pinckney. Flight Nurse Specialist Deborah Stoll of Ann Arbor was also on board.

The helicopter was a back-up for regular survival flight operations, according to John Turck, public relations director at the University of Michigan Hospital. He said the regular vehicle, a two-engine helicopter, was being serviced. The one-engine machine had been leased from Corporate Jets, of Pittsburgh, Pa. Pade is an employee of the leasing company.

## Fair Queen Candidates . . .

(Continued from page one)

Charles and Sandra Schmunk, 13469 Trinkle Rd.; Dawn Spade, daughter of Vince and Pat Spade, 2878 McKinley Rd.; Kathryn Morgan, daughter of Sam and Nancy Morgan, 12900 Trinkle Rd.; Lori Jodele, daughter of John and Judy Jodele, 404 Chandler St.; Jennifer Bennett, daughter of Harold and Phyllis Bennett, 1106 N. Luma Center

Rd.; Michelle Kuhl, daughter of Gregory Kuhl of Manchester and Dianne Kuhl, 876 S. Fletcher Rd.; Vicki Niethammer, daughter of Emily Niethammer, 12923 Old US-12; and Elizabeth Maurer, daughter of Dale and Eleanor Maurer, 11 Maple Ct.

Each candidate will ride in a float during Saturday's fair parade.

## CHELSEA SCHOOL DISTRICT 1986-1987 SCHOOL CALENDAR

Sept. 2	Staff orientation
Sept. 3	First day students
Oct. 31	End of 1st marking period
Nov. 3	Begin 2nd marking period
Nov. 26	Thanksgiving vacation begins, end of school day
Dec. 1	School resumes
Dec. 19	Christmas vacation begins, end of school day
Jan. 5	School resumes
Jan. 20-22	High School exams
Jan. 23	End of 2nd marking period, in-service/records day
Jan. 26	Begin 3rd marking period
Feb. 12	Patriot vacation begins, end of school day
Feb. 17	School resumes
March 27	End of 3rd marking period
March 30	Begin 4th marking period
April 3	Spring vacation begins, end of school day
April 13	School resumes
April 17	Good Friday, 1/2 student day
May 22	Memorial week-end begins, end of school day
May 26	School resumes
June 8, 9, 10	High school exams
June 10	Last day for students
June 11	Records day for teachers

**At Herrick Memorial Hospital**



## WE CARE

That is why we designed our cardiology services to meet YOUR needs.

### WE OFFER

- Intensive Coronary Care Services with Qualified Experienced R.N.s
- Telemetry Monitoring
- Cardiac Rehabilitation in patient and out-patient
- Graded Exercise Testing Stress Test
- Thallium and MUGA Scans
- 2 D & 3 D Echocardiography
- Pacemaker Services
- Streptokinase
- Drug Therapy

Large in Scope & Service, People Sized To Serve You.

**HERRICK MEMORIAL HOSPITAL**

500 E. Pottawatomie St.  
Tecumseh, Michigan 49286  
423-2141

## COLE-BURGHARDT FUNERAL CHAPEL

Your Chelsea Funeral Home with the "HOME" Like Atmosphere

214 E. MIDDLE ST.

Phone 475-1551

- You are assured of a wide range of prices.
- Our prices are always shown on each casket. This means the price of a casket will not be raised at the time you select a casket for any reason.
- You have complete freedom to select a funeral service within your means and desires.
- You will receive complete information concerning our services and an accurate accounting of all costs.
- You will have a real personal choice and "you" will make the final decision as to what best serves your need.
- We pride ourselves on serving "the people" of Chelsea — Rich or Poor — the best.



DONALD A. COLE, Director

Citizens Trust invites you to

# Lunch&Learn

Speaker:  
**Dr. John A. DiBiaggio**  
President,  
Michigan State University

"Higher Education: Right Answers to the Wrong Questions?"

Thursday, September 4, 1986  
12 Noon

Campus Inn  
(Huron and State)

Tickets — \$6.00  
(Lunch Included)

Reservations Required  
Call 994-5555, Ext. 213



**CitizensTrust**  
The Bank of Trust

# COMMUNITY CALENDAR

## Monday—

Chelsea Recreation Council 7:30 p.m., second Monday of the month. Village Council chambers. 35cf

Chelsea Substance Abuse Task Force—second and fourth Mondays, 7 p.m., Krueger House 11

Chelsea Kiwanis Club meets every Monday, 8:30 p.m. at Chelsea Community Hospital.

Parent-Teacher South meets the second Monday of each month in the South School Library at 7:15 p.m.

Chelsea School Board meets the first and third Mondays of each month, 8 p.m., in the Board Room.

Chelsea Ladies, second Monday of each month at the Meeting Room in the Citizens Trust on M-52, Chelsea, at 7:30 p.m. Call 475-1791 for information.

Parents Anonymous Group, Chelsea, a self-help group for abusive or potentially abusive parents, Mondays, 7-9 p.m. Call 475-9176 for information.

Toughlove Parent Support Group—For parents troubled by their teen-agers' behavior in school, in the family, with drugs and alcohol, or with the law 7:30 p.m. Mondays St. Joseph Hospital, 5301 E. Huron River Dr. Education Center, Classroom 8 Information: Sue Thomas, 971-0947, or Gale Cobb, 996-4781.

Waterloo Area Historical Society Board of Directors meets the third Monday of each month 7:30 p.m., at Waterloo Farm Museum, 998 Waterloo-Munith Rd. Open to anyone interested.

## Tuesday—

Sylvan Township Board regular meetings, first Tuesday of each month, 7 p.m. Sylvan Township Hall, 112 W. Middle St. advt

Lima Township Board meets Tuesday, Sept. 2 for the month of September because of Labor Day falling on the regular Monday date.

Olive Lodge 156 F&AM, Chelsea. Regular meeting, first Tuesday of each month.

Chelsea Area Jaycees, second Tuesday of each month at Chelsea Community Hospital. Open to men and women from ages 18 through 36. For more information call Tim Merkel, 475-3272.

Lima Township Planning Commission, third Tuesday of each month, 8 p.m., Lima Township Hall. advt30cf

Chelsea Village Council, first and third Tuesdays of each month.

Lions Club, first and third Tuesday of every month, 8:45 p.m., at Chelsea Community Hospital. Ph. 475-7334 or write P.O. Box 121, Chelsea.

Chelsea Rod and Gun Club regular meeting, second Tuesday of each month at the clubhouse, Langane Rd. 69cf

Chelsea Rebekah Lodge No. 130 meets the first and third Tuesday of each month, at 7:30 p.m.

Chelsea Communications Club, fourth Tuesday of each month, 8 p.m., Chelsea Lanes basement meeting room.

American Business Women's Association 8:30 p.m. at the Chelsea Hospital fourth Tuesday of each month. Call 475-1707 for information.

## Wednesday—

VFW Post 4878 meeting, second Wednesday of each month, 7:30 p.m. VFW Hall, 105 N. Main.

OES, first Wednesday following the first Tuesday of the month at the Masonic Temple, 113 W. Middle at 7:30 p.m.

## Thursday—

Chelsea Rod and Gun Club Auxiliary regular meeting, second Thursday of each month, 7:30, clubhouse, Langane Rd.

Chelsea Area Players Board meeting, second Thursday of each month, 7:30 p.m., at Citizens Trust meeting room. For more information call 475-2629.

American Legion Post No. 31, General meeting the first Thursday of each month at the post home, Cavanaugh Lake.

New Beginning Grief Group first and third Thursday each month, 7:30-9 p.m., Family Practice Center, 775 S. Main St., Chelsea.

Knights of Columbus Women's Auxiliary, second Thursday of each month, 8 p.m., at K. of C. Hall, 29750 Old US-12.

## Friday—

Senior Citizens meet third Friday of every month, pot-luck dinner, games and cards, 6 p.m. at Senior Citizen Activities Center at North school.

Overeaters Anonymous, meet every Friday, 7:10 p.m., Dexter library (upstairs), Baker Rd., Dexter. For more information call Vickie, 663-9134, or Margy, 426-4982. x3cf

Toastmasters International, each Friday in the Woodlands Room at Chelsea Community Hospital at 12 p.m. for information call Judy Peak, 475-1311, ext. 317.

## More Notices—

Drop-In Service, the Children's Center at Chelsea Community Hospital, 475-1311, ext. 405 or 686. advtcf

Parent to Parent Program: in-home, friendly, visiting support system for families with children. Call 475-3306, ask for Jo Ann.

Parents Without Partners, support group for single parents. Youth activities, social events, discussion groups. For membership information, call Polly N. at 971-6820.

Home Meals Service, Chelsea. Meals served daily to elderly or disabled. Cost per meal, \$2.25 for those able to pay. Interested parties call Ann Feeney, 475-1493, or Joyce Manley, 475-2796.

Chelsea Social Service, 475-1581, 2nd floor of Village Offices. Thursdays, 10 to 4, or if an emergency need at other times, call Linda at 475-7405 or Jackie at 475-1925.

Sexual assault counseling for victim, family, friend. Assault Crisis Center, 4009 Washtenaw, Ann Arbor, 994-1616, no charge.

FIA Community Center, open Mon-Fri for free services: food, clothing and financial assistance.

Alcoholics Anonymous group meeting, every Wednesday, noon, 104 E. Middle St. Also Saturday, 7 p.m.

Waterloo Area Farm Museum August hours, 12 p.m. to 4 p.m., except Monday. Located 9988 Munith Rd. Dewey School Museum, Mayer and Territorial Rds., open Sundays only 1 p.m. to 4 p.m. advt

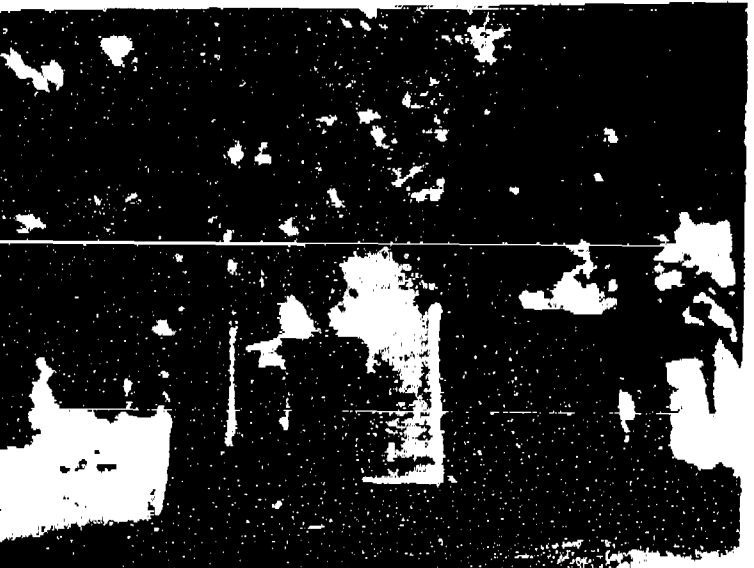
Nothing that you do to attract the birds in the summer will get you the large numbers of birds that a winter feeder might draw. Generally you'll get an individual oriole or humminbird or perhaps a pair of robins rather than a cloud of goldfinches or a dozen doves all at once. You may put out nesting material and not see what kind of bird took it. In other words, you need to be watchful—and maybe a little lucky. If you are you may see birds and behavior that you wouldn't see at a winter feeder. The male cardinal, for instance, is now fawning over the female, following her around and feeding her. This courting behavior occurs only at this time of year. It's a special part of the annual cycle that's yours to see as you observe nature from your backyard.

## Home Tour Offered By CCH Auxiliary

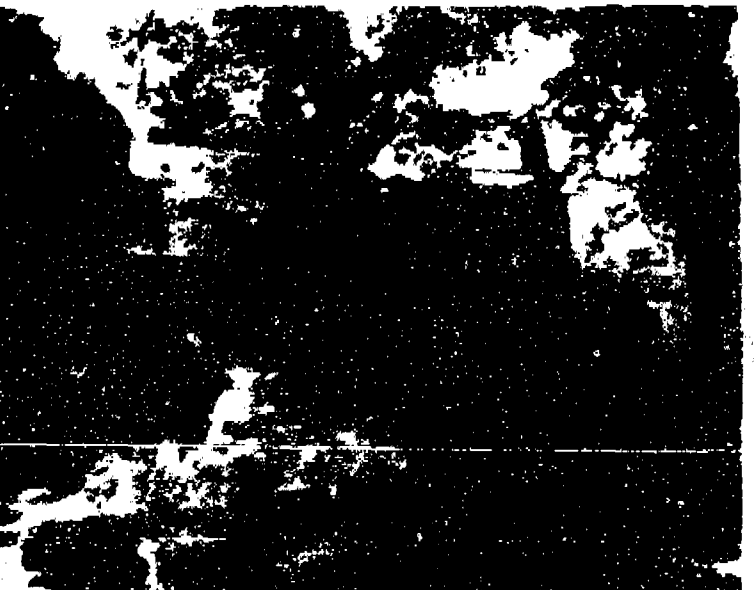
"Through the Garden Gate," a home and garden tour sponsored by the Chelsea Community Hospital Auxiliary, will be held on Sunday, Sept. 7 from 1 to 8 p.m. Tickets may be purchased at Chelsea State Bank Main Office, Staffan-Mitchell Funeral Home, from any auxiliary member, or at any of the featured homes on the day of the tour after 1 p.m. The following three homes are part of the nine home tour:



**DUFFY HOME:** A gardener's dream is the home of Mr. and Mrs. Jerry Duffy located at 23 Chestnut St., Chelsea. Jerry's creative and award-winning gardens have caused many passers-by to stop and admire. Come walk through this garden.



**CARLSON HOME:** A deft hand as this tour is Susan and Marvin Carlson's fabulous home located at 14200 Dexter-Chelsea Rd., Chelsea. A master and starting re-creation of a simple farmhouse open for your viewing.



**TAI HOME:** The lakeside resort of Dr. and Mrs. Tai, 421 Glenview Rd., Chelsea, is everyone's dream home. Complete with putting green, stocked pond, tennis court, and gazebo by the lake. You don't want to miss this enchanting residence.

## Storm Sewer Repairs

(Continued from page one)

have reduced the line's capacity by more than 50 percent. That pipe is at the end of an overflow pipe that runs from the Main St. to Grant St. line down Garfield St.

The council voted to replace the 300-foot overflow line, at an estimated cost of \$15,000.

"We have to start some place," said Village President Jerry Satterthwaite.

"We always say next year and next year never comes," said trustee Herman Radloff.

Fahrner admitted that replacing the overflow line is no solution to the problems, saying it will only make the problems less severe. He said that eventually the entire line should be replaced, which won't be cheap.

Fahrner suggested that one solution to replacing the entire line might be to construct a retention pond off Wilkinson St. that would take care of excess water during severe rains. That water would be returned to the creek later via a controlled flow system.

"The EPA should like that because a retention pond significantly improves the quality of the water" because sediment has a chance to settle, Fahrner said.

Fahrner indicated that there are also problems with the flow of water in Letts Creek caused by downed branches, aquatic growth and other obstructions.

The village has plans to work

on the creek drainage problems during the winter.

However, Fahrner noted that nothing short of a full-scale dredging of the creek is likely to provide enough water capacity in the creek.



During the ice ages, the Sahara Desert was a rich grassland.

## HISTORICAL - PATRIOTIC CALENDAR

Compiled by the American Department, Veterans of Foreign Wars Presented locally by VFW Post No. 4076

Aug. 30, 1963: Washington-Moscow "hotline" communications link opened. Still works.  
Sept. 1, 1917: Nazi invasion of Poland launched World War II.  
Sept. 2, 1945: Labor Day. First Monday in September.  
Sept. 2, 1945: V-E Day. Japan formally surrendered, ending World War II fighting.  
Sept. 3, 1789: Revolutionary War declared officially ended.  
Sept. 3, 1792: France declared war on Germany.

## Subscribe to The Chelsea Standard!



Michigan

AUTO HOMEOWNERS BOAT LIFE RENTERS

**JACK SCHLAFF AGENCY**

**426-3516**

Mon. & Fri. M-Fri.

1344 Quarter Ann Arbor Rd. Dexter, Michigan

**GAIL PAXTON**  
TURNED  
**39**

on Aug. 26

"Now," you're old!

from  
"Always will be younger"



## CONGRATULATIONS to FRED WORDEN, JR. and KEITH JOHNSON

Faist-Morrow Buick-Olds-Chevrolet, Inc., would like to take this opportunity to congratulate Fred Worden, Jr. and Keith Johnson who have just passed all necessary tests and have on-the-job experience to have been recognized as Master Technicians, the highest achievement any General Motors mechanic can receive from any General Motors division.

Fred has eight years at Faist-Morrow and Keith has nine years.

We are pleased to have our technicians in our dealership receive this outstanding award. As far as we know, no other G.M. dealership in this area has accomplished such recognition from General Motors.

Please feel free to stop and congratulate them and have your service work done by them, or any of our other certified mechanics who are also on duty to handle your service needs.

## FAIST-MORROW

BUICK-OLDS-CHEVROLET, INC.

1500 S. Main St., Chelsea Ph. 475-8664

If your tap water came with an ingredient list, you just might call your Culligan dealer.



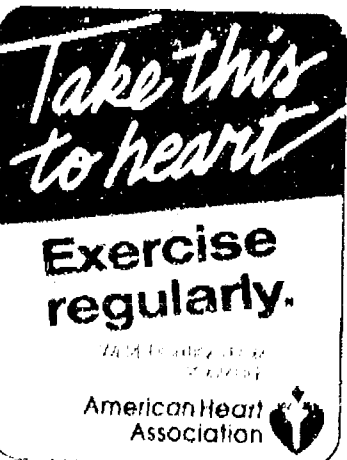
If you're trying to watch out for your family's health, you probably check the ingredient lists on lots of products these days. Too bad you don't get one with your tap water. If you did, you might decide to switch to Culligan's brand!

**Culligan instead of water!** A Culligan Drinking Water System removes up to 98% of many of the contaminants that could be in your water, to leave it cleaner and fresher-tasting. No single home drinking water process is more effective. And bottled water isn't nearly as convenient.

You can't check the ingredient list for your tap water. But you CAN make sure it comes from a faucet with a Culligan label. Which, come to think of it, might be even better!

**Culligan**  
Think about it.

**CALL 662-5665**



Exercise regularly.

Helping you stay healthy.

American Heart Association

## ANNUAL CHELSEA KNIGHTS OF COLUMBUS CHICKEN BROIL

**SATURDAY, AUG. 30**

11 a.m. to 5 p.m.

**K. of C. HALL**

On Old US-12 at M-52

Across from Chelsea Fairgrounds

1/2 CHICKEN - POTATO CHIPS  
COLE SLAW - ROLL - DESSERT

All for **\$4.50**

Eat in air-conditioned comfort or take home or out to watch the Fair Parade.



## Washtenaw GOP Picnic Set Sept. 7

All Republicans in Washtenaw county are invited to a free picnic from 2 to 5 p.m. on Sunday, Sept. 7.

Jointly sponsored by the Washtenaw Republican County Committee and Republican candidates and office holders, the picnic will be held at the home of State Representative Margaret O'Connor, 4300 Ann Arbor-Saline Rd.

Congressman Carl Pursell is donating the pop and hot dogs, which will be cooked by County Clerk/Register Bob Harrison, Sheriff Ron Schebl, Prosecuting Attorney Bill Delbey and Treasurer Mike Simpson. County Commissioners Ellis Pratt, Marty Straub and Roy Smith and their wives will act as hosts and hostesses, according to picnic chairman Colene Conrad.

Republican county chairman Jane Talcott of Manchester announced that the College Republican Clubs from the University of Michigan and Eastern Michigan University will provide games for children. Virginia Johansen, president of the Ann Arbor Area Republican Women's Club and Richard Tubbs, president of the Young Republicans Club, will be on hand to sign up new members.

State-wide party officers and candidates have been invited. A crowd of over 200 attended last year's picnic, and twice that many are expected this year.

For more information call the County Republican Headquarters, 971-4622. In case of bad weather call 663-1325. The day of the picnic to see if it has been postponed to Sept. 14.

The first federal bureau to attempt to ease labor-related racial tensions caused by blacks leaving the South was the Division of Negro Economics, in the Department of Labor in 1938, according to "Labor Firsts in America," a publication of the U. S. Department of Labor.

Give a  
Gift Subscription to  
The Chelsea Standard!



CHELSEA HIGH SCHOOL CLASS OF 1951 celebrated its 25th reunion on Saturday, Aug. 16 at Win School's in Jackson. 25 members of the class and their guests were in attendance. Class members came from as far away as Denver, Colo., Tucson, Ariz., Duran Park, Calif., Morgantown, W. Va., and Church Falls, Va. In the front row, from left, are Delores (Walker) Notten, Donald O'Dell, Leola (Alabaster) Brennan, Duane Hall, Kay (Murphy) Bertina, and Melvin Leach. In the second row, from left are Carl O'Dell, Duane

(Nash) Lane, Ruth (Guenther) Schantz, Maureen (Hoffman) Kobler, Kay (Quigley) Egler, Nancy (Benderick) Grooms, Arlene (Hain) Riba, Phyllis (Kelly) Galle, Jayne (Fraser) Bozer, Walter Bauer, Jerry Lehman and Duane Genter. In the third row, from left, are Victor Gaudier, Carl Kaeh, George Heydlauff, Donald Peterson, Ruth Elexman, Jim Roberts, Raymond Strimbach, Claude Denton, Cal Summers and Mary Tulin.

## Brighton Hospital Offers Films on Alcohol, Drugs

Three films designed to help patients and schools prevent and cope with alcohol and drug abuse among children may be borrowed at no charge from Brighton Hospital, which has specialized in treating alcoholism and chemical dependency for over 25 years.

Three films currently available are "Sons and Daughters, Drugs and Booze," which is of special interest to parents and educators; "One Too Many," depicting substance abuse among teenagers; and "Get the Message," aimed at elementary school children and their parents.

According to Ivan C. Harner, the president of Brighton Hospital, any parent, school, community, or church group may borrow the films at no charge. Harner notes that the films are used in communities throughout Michigan since the hospital serves the entire state and the midwest region.

To reserve a film, an organization should contact the hospital's Community Relations Department at (313) 225-1211, ext. 276.

### "Through the Garden Gate"

Home and Garden Tour

Sponsored By  
**CCH AUXILIARY**

**Sunday  
Sept. 7**

**1 to 6 p.m.**

★  
Tickets  
available at  
Chelsea State Bank  
(Main Office)  
Steffen-Mitchell  
Funeral Home  
Auxiliary Members

After 1 p.m. at  
Featured Tour Homes  
DONATION: \$5.00



THE BOYS and two troop leaders from Chelsea Boy Scout Troop 476 spent July 5-12 at Wrights Lake Scout Camp, the Wolverine Council official summer camp. The group participated in many different activities, including many merit badge activities such as archery, canoeing, hiking, and swimming. There were also still awards, such as cooking, environment, camping and first aid. In addition the boys could shoot at a rifle range, learn to ragdoll, swim, fish and boat. In the front row, from left, are David Sawyer, Bryce Hanson, Alex Hammerschmidt, Steve Everett and Vince Dunn. In the back row, from left, are Eric Hammer, Steve Martin, Mike Hinderer, Scoutmaster Don Oesterle, Chris Hansen, and Keith Roth. Not pictured is Scoutmaster Mike Stone, who snapped the picture.



GINA GARRIGUS BARELY BEAT THE THROW to first base, but she made it. Gina and other parents of Chelsea's 1958 Little League champions accepted the boys' challenge on the diamond at Duna Field, Friday, Aug. 22. Parents lost to the champions, 4-4, explained team coach Earl Grant.

# CHELSEA COMMUNITY FAIR

**TUESDAY, AUG. 26 — SATURDAY, AUG. 30**

## Featuring Rides By CROWN AMUSEMENTS ON THE MIDWAY

### Pay-1-Price Ride Special . . . RIDE AS MANY RIDES AS YOU WISH FOR ONLY \$7.00

**Tues., Wed., Thurs., Fri., Sat. — All 5 Days  
12 Noon to 5 p.m., or 5 p.m. to 10:30 p.m.**

*Regular Price Tickets Also Available*

## SPECIAL NEW SUPER RIDE THIS YEAR THE ORBITER — Direct from England

**A Real Thriller!**



CUB SCOUT PACK 45 had a great time at a picnic in Pierce Park, Thursday, Aug. 21. Among those attending were, from left, Matt Cabanis, David Thompson holding little brother Jamie, Nathan Armstrong-Taylor, Jessica Johnson holding her little sister Cynthia, Maya Pente, unidentified, Emily

Armstrong-Taylor, and Tony Trotter; back row, from left, Andy Bennett, Chris Trotter, Jimmy Bennett, Jason Phelps, Karl Tremper, Tommy Redland, Robbie Johnson, Jeremy Montange and Scottie Johnson, II.



MERRY-GO-AROUNDS AND PICNICS are partners in fun. When Cub Scout Pack 45, Chelsea, planned the year's first activity, a picnic at Pierce Park, brothers and sisters enjoyed the occasion as well as the Cub Scouts and their parents.

Shows having fun on the park's merry-go-round are, from left, Scottie Johnson II, Chris Trotter, E. Jeremy Montange, E. Emily Armstrong-Taylor, E. Joshua Dumark, whose brother Joe is a Cub Scout, and Melissa Marshall, E.

## Trim Your Waste!

The Lennox Conservator III gas furnace is actually a reduction plan for overhead heating bills. It's one of the easiest, most effective ways we know to trim your waste. Annual Fuel Utilization Efficiency is rated at 80%, much better than older, less efficient units that currently operate at only 65-70% efficiency. Conservator III can cut your losses in half!

Models are available in capacities from 80,000 to 100,000 Btu/hour. Don't wait. Call Today.

**80% EFFICIENT**

Completely wired and installed, the LENNOX G16 Q 4-100 CONSERVATOR III Gas Furnace with Electronic Pilot

\*Price Starts **\$1,697<sup>00</sup>**  
As Low As

CALL FOR FREE ESTIMATE

**SENIOR CITIZEN  
10% DISCOUNT**

**FREE SPACE-GARD WITH  
FURNACE PURCHASE**

FOR A CLEANER HOME... **Space-Gard®  
AIR CLEANERS**

Removes up to 90% of Airborne Dust, Pollen, Smoke and other Pollutants from the air circulated through your Forced Air System.

cleaner air—Removes even the microscopic size airborne particles reduced pollutants—The Space-Gard air cleaner removes practically all of the airborne pollen and spores circulated through.

less cleaning, decorating—Because there will be less dust and dirt to settle on furniture and furnishings.

Visit Our Booth at the Chelsea Fair



**426-4776**

SERVING WASHTENAW  
& LIVINGSTON COUNTY.

**gleason & raus co., inc.**

HEATING / COOLING & COMMERCIAL REFRIGERATION  
Sales & Service

\*Price Doesn't include modification to existing duct wiring or gas pipe.

## McKune Library Increasing Hours To Serve Patrons

McKune Memorial Library Board has announced an increase of 14 hours which the library will now be open.

The library will open at 10 a.m. Monday through Saturday. The evening hours are expanded also. In the past the library was closed from 5 p.m. to 7 p.m. It will now be open during those hours.

The heavy use of the library is one of the contributing factors to this change. July 1986 the library circulated 5,558 items, making a new record for the circulation of library materials.

The new hours, starting on Sept. 15, are: Monday through Thursday, 10 a.m. to 9 p.m.; Friday, 10 a.m. to 5 p.m.; Saturday, 10 a.m. to 5 p.m.

## Wheat Poll Vote Says No To Controls

The overwhelming "no" vote in the wheat poll by Michigan producers indicates that farmers understood the potential impact of mandatory production controls, said Bob Craig, manager of commodity activities and research for Michigan Farm Bureau.

Of the growers who voted in the poll in Michigan, nearly 74% voted no. That was one of the highest percentages of "no" votes in the nation, Craig said. "We have a very diverse agriculture in our state, and I think producers were concerned that if mandatory controls were established for wheat, they might be extended to other commodities as well," he said.

Nation-wide, wheat growers voted "yes" in the wheat poll by a 54% to 46% margin, but Craig said those results were inconclusive. "If anything, farmers nationally probably showed their disgust with the whole idea of a wheat poll by simply not voting," he said. Craig noted that nearly 80% of the wheat growers nationwide did not bother to cast ballots.

But Al Almy, director of public affairs for Michigan Farm Bureau, said the national results would likely spur some legislative action on mandatory production controls. "I think in the political whirlwind in Washington, the results of this poll will be a strong signal to those congressmen who favor production controls to begin an immediate push to get legislation enacted to require mandatory controls," he said.

Don't forget to renew your Chelsea Standard subscription!



ONLY  
**\$1999**

SAVE \$200

with 36" r.d. mower

FEATURES INCLUDE:  
8 HP Kohler engine • 8-speed Uni-Drive™ transaxle • No-tool Tach-a-rat™ hitch system • Manual attachment lever • Structural steel frame • Pinion & sector steering • Sealed beam headlights • Cast-iron front axle • Greasable spindles



Model 300-8

## Summer Close-Out

All Models Sale Priced



110 N. Main Chelsea

415-7472

Open Tues.-Thurs., 9:30-5:30, Mon. & Fri., 8:30-8:30

## Tax Reform Should Benefit Agriculture

The tax reform package reported out by a House-Senate conference committee should have a positive effect on farmers over the long run, according to agricultural economist and tax expert Mike Kelsey of Michigan State University.

Kelsey, speaking to Michigan Farm Bureau commodity advisory committees in Lansing on Aug. 21, said the short term picture may appear a little less rosy. "I'm sure that many farmers are going to be unhappy with some of the tax preference items that have been taken out of the law, such as the investment tax credit and preferential treatment of capital gains," he said.

"But what it's going to do is put agriculture back in a position where you make investments as a result of the economic benefits rather than just the tax benefits."

That situation should benefit the medium size family farms that have been under the most financial stress, he said. "It's been some of the very large farms that have drawn in outside capital specifically for tax purposes. The old tax law made that justifiable even if the farmers weren't making any money."

Kelsey suggested that farmers should begin their tax planning early and consider whether they should sell some capital assets in 1986 in order to take advantage of the capital gains rates. "But that has to be looked at very carefully in relation to the much lower tax rates that we'll have in 1987 and 1988," he said. "So tax planning will be especially important this year because some of the guidelines we've had in the past are not applicable."

## Pinckney Youth Completes Air Force Basic Training

Airman 1st Class Robert J. Hoepfner, Jr., son of Jean M. Hoepfner of 1481 Pinckney Rd., Pinckney, and Robert J. Hoepfner, Sr., of 15446 Brammel, Detroit, has graduated from Air Force basic training at Lackland Air Force Base, Tex.

During the six weeks of training the airman studied the Air Force mission, organization and customs and received special training in human relations.

In addition, airman who complete basic training earn credits toward an associate degree through the Community College of the Air Force.

Standard Want Ads  
Get Quick Results!



Todd Sprague and girlfriend Christine Lehmann.

## Couple A Little Closer Thanks to Exchange

A guy knows he's something special when his girlfriend will leave her family and native country for a year so she can teach school in this country a mere nine hours drive from where he attends college.

But Chelsea's Todd Sprague, and Christine Lehmann, a native of Zurich, Switzerland, figure nine hours away is a whole lot closer than several thousand miles.

Christine got herself to this country via the Amity Institute of California, which sponsors a work exchange program. She'll be teaching German at a high school in Minnetonka, Minn., near Minneapolis, and living with a local family. That's just a long day's drive from Kalamazoo, where Todd attends Western Michigan University.

The couple met two years ago on a dance floor in Ann Arbor. Christine was in town to visit her brother, Roger, who was attending medical school.

Christine said she was used to the European custom of going to a discotheque to dance by herself, and was completely surprised when Todd asked her to dance.

"When I was here then, I thought I would travel a lot," Christine said.

"But after I met Todd, I didn't

travel so much."

Since then the couple has corresponded mostly via mail, although Todd admits he's run up some rather hefty phone bills. In addition, he spent several weeks in Switzerland last summer, traveling all over Switzerland and Italy.

"At least I'll get to see her more than once a year."

Finding the spare time is going to be tough, they admit. Todd, one of the top athletes at WMU, has both an indoor and outdoor track season, as well as his business communications studies, to take up his time.

For Christine, it will be her first try at teaching, although she did manage 150 young people in a secretarial school.

Todd is the son of Jim and Marian Sprague, 3460 Clear Lake Rd.

Four-fifths of the employed women maintaining families in 1985 worked at full-time jobs. Half of the women maintaining families had earnings which equalled three-fourths or more of family income, according to a fact sheet on working women published by the Women's Bureau of the U.S. Department of Labor.

WHEN YOU NEED

# HELP!



MATT  
VILLEMURE

CALL  
MATT  
OR  
RON  
FOR



RON  
SCHUYLER

**AUTOMOTIVE REPAIRS  
THAT LAST A LIFETIME**

(We Guarantee it!)



**LIFETIME  
SERVICE  
GUARANTEE**

The car repair guarantee that lasts for as long as you own your vehicle. The free lifetime Service Guarantee. If you ever need to have your Ford, Mercury or Lincoln fixed, you pay once and we'll guarantee that if the covered part ever has to be fixed again... we will fix it free. Free parts. Free labor. Covers thousands of parts. Lasts as long as you own your vehicle. "Lifetime" means the consumer's ownership period of his or her Ford, Lincoln-Mercury, Mercury or Ford Light Truck. "Ask us for a free copy of The Guarantee!" This limited warranty covers vehicles in normal use. And excludes routine maintenance parts, belts, hoses, sheet metal and upholstery.

MICHIGAN'S OLDEST FORD DEALER SINCE APRIL 15, 1912

**PALMER**

MOTOR SALES, INC.



**FORD  
MERCURY**

DOWNTOWN CONVENIENCE

Hours: Mon., Thurs. & Fri. 7:30 a.m. to 5:30 p.m. Saturday 7:30 a.m. to noon

222 S. Main St., Chelsea

Special Line  
Direct To Service

**475-1303**



# Abundance of Autumn Trips Await Michigan Travelers

As the weather turns crisp and leaves become drenched with color, fall travelers can board a car, motorcoach, plane or ship to enjoy a day or week-long autumn getaway, reports AAA Michigan. "From a one-day tour to Frankenmuth to a three-day visit on Mackinac Island, Michigan has a wealth of great destinations from which to view the state's spectacular fall color show," stated Peter R. Erickson, AAA Michigan Travel Services director.

Those who prefer a longer voyage can try their luck at the casino tables and enjoy Broadway-style shows in Las Vegas, explore South America's majestic beauty and culture or bask their toes in the white sands of a Caribbean island during an island-hopping cruise.

While Michigan sports a myriad of areas known for fall color beauty, among the popular favorites are Mackinac Island and the route taken by travelers headed up to the Agawa Canyon by train.

Mackinac Island's charm and history draw many autumn visitors who prefer cooler temperatures and smaller crowds," Erickson noted. Three-day bus trips depart from Dearborn Sept. 28 and Oct. 3, with the ferry ride to the island, two nights at the historic Island House Hotel, an island carriage tour, two dinners and two breakfasts included. Prices start at \$190 per person.

A breath-taking trek aboard the Algoma Central Railway, a Soo Lock boat tour, two nights at the Water Tower Inn in Sault Ste.

Marie, Ontario, some meals and the round-trip motor coach ride from Dearborn await those who book the Agawa Canyon Tour departing Sept. 22 and Oct. 1 and 10. Prices start from \$202 per person.

The bus travels north on I-75 along some of the most scenic areas in Michigan's Lower Peninsula," Erickson added. "And the railway ride of 114 miles into the Agawa Canyon allows time for passengers to relax, take pictures and enjoy the scenery."

Those with a little less time can motor coach from Dearborn to Frankenmuth, with departures Sept. 9 and Nov. 18. The one-day tour of the Bavarian-style city includes lunch at the Bavarian Inn. Prices start at \$36 per person.

Las Vegas-bound travelers may choose a three-, four- or seven-night trip and pick one of 11 major hotels this fall. The package, which includes round-trip air from Detroit, hotel, show tickets and sightseeing, starts at \$180 per person.

Rio De Janeiro, Buenos Aires, and a visit to the Iguazu Falls are among the highlights of a South American adventure from Oct. 21-31," Erickson said. "The package, which also includes round-trip air from Miami, eight nights in three hotels, many meals and two tours, starts at \$1,282 per person." Round-trip air fare from Detroit to Miami, for as low as \$219, is additional.

Among the many Caribbean cruises available this fall are one-week stays on board the Norwegian Caribbean ships bound for Nassau, Freeport, Cozumel and other tropical playgrounds. The SS Norway, MS Southward, MS Starward and MS Skyward depart from September through December, which prices starting from \$920, including air fare.

## Ted Merkel on Dean's Honor List At Notre Dame

Ted Merkel, son of Robert and Barbara Merkel, of 124 W. Summit St., has been placed on the dean's list for scholastic achievement for the spring semester at the University of Notre Dame. A 3.4 grade point average is required.

Ted, a 1984 graduate of Chelsea High school, will be a junior this fall and is currently pursuing a degree in pre-medical studies.

# The Chelsea Standard

Section 2

Chelsea, Michigan, Wednesday, August 27, 1986

Pages 9-20



CHELSEA STATE BANK became the undisputed champions of the Chelsea Recreation Department's slow pitch league with a convincing defeat of Jiffy Mix in the final game. In the front row, from

left, are Diana Whitaker, Lori Schanz, Sue Pickell, Joann Tobin and Karen Tobin. In the back row, from left, are Jennifer Guenther, Julie Koch, Karen Guenther, Patti Harne, Shelly Weber and Anne Weber.

## Restauranteur Has Eye On Jiffy Market Site

If all goes as Jim Carres, of Saline, hopes it will, Chelsea will have a new, specialty restaurant sometime soon.

Carres, owner of Jimmy's Filling Station restaurants in Saline, Brooklyn and Clinton, has his eye on the site of the former Jiffy Market on Sibley Rd. The restaurant specializes in subs, salads, pizza and seafood, mostly on a carry-out basis.

However, before the restaurant can become a reality, Carres has several obstacles to overcome.

Carres is seeking to have the parcel annexed into the Village of Chelsea. Currently is on Sylvan township land. Tuesday night the village council passed a resolution to annex the land. The final say, however, is up to the Washtenaw County Board of

Commissioners.

Carres wants to have the land annexed so that he can take advantage of the village's sewer system and water lines. However, the closest line is at least 200 feet away. The cost to construct the additional line would be approximately \$1,000, according to Assistant Village Manager Lee Fahrner. An additional \$375 would be required to extend the water line, and there would be a sewer tap-in fee of \$250. Carres would have to pay to construct sewer line from the building to the tap-in point.

Carres admitted that the costs were higher than he anticipated and he said he hopes he can spread the cost out over several years. Nothing was decided at the meeting concerning the financing

of the sewer project, although there was discussion that a one-parcel special assessment district might be set up so the costs could be spread out.

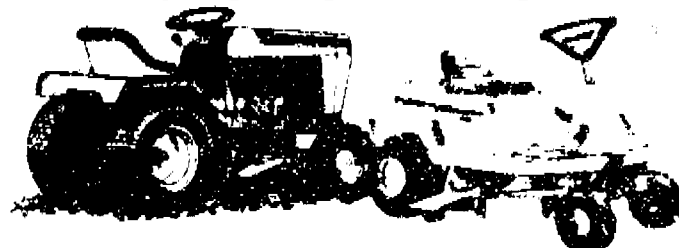
Carres opened his first restaurant eight years ago in

Saline, and business has been expanding ever since then.

Michigan has more registered snowmobiles, more registered boats, and more public golf course holes than any other state.

## Simplicity

# We're gonna sell 'em, not store 'em.



### Special Inventory Clearance Sale on Simplicity mowers and tractors.

We've got too much of a good thing. Too many Simplicity mowers and tractors - the best value you can buy.

Now they're even better. With the usual great features, like Briggs &

Stratton or Kohler engines. Floating mower decks for the smoothest cut possible. Gear variable speed or hydrostatic drive.

Come in and cash in today! Don't wait taking trades, too!

## VILLAGE LAWN & GARDEN CENTER

120 S. Main, Chelsea Ph. 475-3313

SALE BEGINS MON. AUG. 25

## FAIR WEEK

# Red Wings SALE

SALE ENDS SAT. AUG. 30

COMFORT BREAKTHROUGH See it to believe it!



• Running Shoe Comfort • Softflex Comfort Insole

REG. \$69.95 **\$55.95**

SAVE \$14.00 THIS SALE

### PULL-ON COMFORT



• Full-grain, water-resistant leather • Anti-static, leather insole • Rugged, welted construction • Cushion wedge sole foot support

REG. \$71.95 **\$64.00**

SAVE \$7.95 THIS SALE



### The Fittin'est Work Shoe



## Red Wing's PECOS BOOTS ARE BUILT TOUGH!

- 1) Full-grain, water-repellent leather
- 2) Rugged, sewn-welt construction
- 3) Cushion-soft, foot-forming insole
- 4) Steel shank for foot support
- 5) Oil/slip-resistant sole and heel

1155 SIZES	AA	A	B	C	D	E	F	G	H
	8-9	9-10	10-11	11-12	12-13	13-14	14-15	15-16	16-17

REG. \$84.95 **\$76.00**

SAVE \$8.95 THIS SALE

### RED WING SHOES

SPORTSMEN'S CHOICE FOR FIT & COMFORT.



REG. \$99.95 **\$88.00**

SAVE \$11.95 THIS SALE

### C-O-M-F-O-R-T

is the result of dedication to fit, construction and materials. Get the best—Red Wings!

REG. \$74.95 **\$66.00**

SAVE \$8.95 THIS SALE

### COMFORT SATISFYING SUPERSOLE!



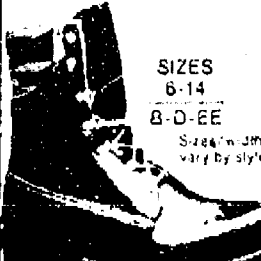
- Oil & gas resistant
- Comfort-cushion insole
- Supportive arch lift
- Takes a polish shine
- In black or brown

REG. \$54.95 **\$48.00**

SAVE \$6.95 THIS SALE

### RED WING SHOES

### WATER-PROOF! INSULATED, TOO!



The all-new Irish Setter boot

- Made with Thunder leather that repels water, yet breathes comfortably.
- Fully lined with a quilted tri-layer of warm Thinsulate® Urethane foam and absorbent Cambrella

Reg. \$107.95 **\$95.00**

SAVE \$12.95 THIS SALE

### ANTIFREEZE WORK BOOT



- 1 Quilted Cambrella® and foam over Thinsulate® 2 Waterproofed heel counter 3 Insulated cork midsole 4 Tri-layer insulated insole 5 Steel shank 6 Full-grain, water-repellent leather 7 Oil-resistant storm welt 8 Long-wearing Urethane sole

INSULATED Reg. \$84.95 **\$75.00**

SAVE \$9.95 THIS SALE

107-109 S. MAIN  
CHELSEA, MICHIGAN  
PHONE 313-475-1606

# FOSTER'S MEN'S WEAR

# SPORTS

## Girls Cross Country Team Has Hopes for Chance at State Title

Chelsea High school girls cross country team ought to be one of the state's powerhouse squads this season as coach Pat Clarke begins his 18th season.

The Bulldogs finished third in the state in class B last season and nearly the entire team is back.

"I think we can be a factor in the state meet," Clarke said.

The girls are more experienced this year and seem to be taking everything more in stride. If we keep healthy and keep our heads on straight, we can be one of the top teams."

Leading the group is a trio of senior captains including Melanie Flanagan, fourth year varsity, all Southeastern Conference, all-region, Sallie Wilson,

second year varsity, all-SEC, all-region, and Robin Mock, fourth year varsity, all-SEC, all-region.

"These seniors should provide outstanding leadership which is so vital in state competition," Clarke said.

Returning juniors include all-stater Kasey Anderson, the regional champion last year; Jennifer Ross, all-SEC; Alsha Dorow, the SEC junior varsity champion last year; Anna Muncer, Ann Brosnan and Wendy Hurn.

Sophomore Debi Koehn has looked "particularly strong" in pre-season workouts, Clarke said.

A bonus this season is the return of Kim Allen, who transferred out to Arizona in the

middle of last season. Kim had also been an all-SEC runner.

"I'm really glad to have Kim back," Clarke said.

Newcomers who should help out include junior Laura Torron, who is running in third position so far, and freshmen Shelia Hunt, Kim Roberts, Vicki Bullock, Anne Steffensen, Katie Peckham, Charity Strong, Stephanie Wagner, Becca Burke and sophomore Jennifer Harris.

Chelsea faces some stiff competition from league foes Saline Hornets and Milan Big Reds. Saline finished seventh in the state and Milan 18th last season, Clarke said. That Lincoln, Tecumseh, Pinckney and Dexter all had young teams last season and should be much improved.



STICKBRIDGE MERCHANTS took first place in a slow pitch softball tournament held in Spring Arbor. They won four of five games, including the final playoff contest. In the front row,

from left, are Jerry Couchman, Jack Bannin, Gary Cornish, Larry Adams and Mike Ladd. In the back row, from left, are Jim Koch, Matt Ward, Jim Hughes, Todd Sawyer and Mike McClintock.



C.A.T.S. fielded a strong team in this year's Chelsea Recreation Department slow pitch league. In the front row, from left, are Brenda Foster, Kathy Groom, Roberta Kemp, JoAnn

Gould, and Marlene Consiglio. In the back row, from left, are Sue Koch, Marcia Newman, Karen Stein, Vicki Molsinger, Chris Surma and Renee Kornel. Not pictured is Sandy East.

You Read It First in The Standard!

**PLAY DAILY AT VOGEL'S PARTY STORE**

HOURS: Mon. thru Sat. 8 to 9 — Sun. 8 to 7

**PEPSI**

1/2 LITER PRODUCTS

**\$1.99**

**PARKING AT FRONT DOOR**



MEET THE DOGGERS—1986 CHAMPIONS in Chelsea Little League play. Their league record this summer is 4-1-2. "Add to that a pair of exhibition games—a win over Dexter and a loss to Manchester," said coach Earl Gran. Explaining they are very proud of the boys, Gran and the other two coaches, Russell Weid and Tom Eder, say the team has played excellent "heads up" ball this summer. "They have really learned a lot and we all had a lot of fun during the season," the coaches agreed. Commending the parents as well, the coaching staff heaped praise on the families of the players for taking the time to come out to the ball diamonds and support the

players. Shown in the photo, front row from left, are Cory Brown, Jason Tripp, Mark Eder, Kevin McCallu, Jayson Lien and Jeremy Zeigler. Standing behind them, left to right, are Cory Weid, Mike Eder, Jason Garrigus, Richie Dunahoo, Chris Gibson, Jason Johnson, Steve Gran and coach Earl Gran. Coaches Russell Weid, left, and Tom Eder stand in the back row, behind the boys. Note the trophies held by many of the team players. Each boy received an individual trophy, and the team was presented the large trophy for topping the league. Missing from the photo are players Eric Montague and Andy Wetzel.

## Boy Harriers Look To Improve

Chelsea boys cross country team is aiming to improve on its 28th place finish in the class B state meet last season with a corps of eight returning lettermen.

"In order to move up from 28th place, we must continue to improve throughout the season," coach Pat Clarke said.

Lee Riemenschneider and Jason Creffield, both fourth-year runners, join senior and second-year runner Greg Brown as this season's tri-captains.

Junior John Cettell, an all-region, all-Southeastern Conference runner, returns. He's recovering from a mid-season accident, Clarke said, but should

round into form by the beginning of the season.

Clarke said that senior Tucker Tied has looked especially strong during pre-season workouts, as has sophomore Paul Hedding.

Other returning lettermen who will be counted on heavily include junior Mike Lavigne and seniors Brian Coy and Jeff Andress.

Top newcomers include juniors Dave Kvamberg, Brady Murphy, Craig Zuehlke, sophomores Matt Riemenschneider and Paul Bayers, and freshmen Holden Harris, Brian Zingara and Jeff Ostermer.

Clarke said the Saline Hornets, who finished sixth in the state in class B last season, should be the preseason favorites in the SEC. The Hornets return five senior lettermen. He said Lincoln should be much improved and could challenge, along with Pinckney and Tecumseh. Milan and Dexter will be rebuilding, he said.

"Our team could contend if we can round into shape and can maintain our positive attitude," Clarke said.

## Fun Run to Fair Slated Saturday

Want to do a run that leads you to something other than the finish line? Join the third annual "Fun Run to Meet You at the Fair" which will be held in Chelsea on Saturday, Aug. 30. Participants will leave the Family Practice Center at 9 a.m. and be cheered across the finish line at the Chelsea fairgrounds. Entrants have a choice of doing a one-, three- or five-mile run as well as a one-mile walk.

"We want to emphasize the fun in 'fun run,'" states Peg Campbell, race director. "With this event, everyone wins, everyone is eligible for prizes, and everyone has a good time. Once the post-race activity has finished, everyone can go to the fair."

The run is designed to encourage people to run for the fun of it. All participants will receive a t-shirt, refreshments, and, as they cross the finish line, a lottery envelope. Some envelopes will contain gift certificates for prizes. In addition, special prizes will be awarded to all participants age 14 and under, as well as to other categories of participants.

The run is sponsored by the Chelsea Recreation Council and the University of Michigan Family Practice Center at Chelsea.

The entry fee is \$6 until Aug. 23. After that the fee is \$8, and \$9 the morning of the run.

For an application or more information, call Peg Campbell at 763-7120.

## CHS Class of '77 Starts Plans for 10th-Year Reunion

Members of the Chelsea High Class of '77 will meet Friday, Sept. 5 at 6 p.m. at Park Park, Chelsea, to organize details for the upcoming reunion to be held in 1987.

Names and addresses of fellow classmates are vitally needed and any assistance in supplying the information will be appreciated.

Anyone unable to attend but desiring more information may call Robert Swanberg (517) 784-7915.

Michigan's state park system contains more modern campsites than any other state park system in the nation.

## FALL POOL SCHEDULE

Beginning Sept. 3, 1986

### RECREATION SWIMS . . . . . Fee: \$1.00

Monday through Friday, 6:00-8:00 a.m. & 4-6 p.m.  
Monday, Wednesday, Friday 8:00-9:00 p.m.  
Saturdays 2:30-4 p.m.

### ADULT SWIMS ONLY . . . . . Fee: \$1.00

Monday, Wednesday, Friday 9:00-10:00 p.m.

### LESSONS—Children

Fee: residents \$15.00, non-residents \$20.00

Monday through Friday (9:1 through 9:12)  
3 & 4 yrs. 5:00-5:30  
4 & 5 yrs. 5:30-6:00  
5 & 6 yrs. 6:00-6:30  
6 & up 6:30-7:00

### SWIMMING AEROBICS . . . . . Fee: \$20.00

Tuesdays & Thursdays 8:30-10 p.m.  
9:23 to 11:13

### CHELSEA AQUATIC CLUB . . . . . Sept. 15 to Dec.

8 & Under Novice — Fee: \$15.00  
Mon., Wed., Fri. 4:00-5:00 p.m.

### All Fees Other Than Above—Resident Non-Resident

1 swimmer . . . . . \$35.00 \$50.00  
2 swimmers . . . . . \$55.00 \$75.00  
3 swimmers . . . . . \$60.00 \$90.00

### 10 & Under (regular)

Mon., Wed., Fri. 5:00-6:00 p.m.

### U.S.S. PROGRAM (advanced swimmers—must have current USS registration to enter)

Mon., Wed., Fri. 6:00-7:00 p.m.  
Tues. & Thurs. practices to be announced.

### MIDDLE SCHOOL PRACTICE—(6th through 8th grades)

Mon., Wed., Fri. 7:00-8:00 p.m.  
Tue. & Thurs. to be announced.

### DIVING PROGRAM to be announced

beginning August 18

Tell Them You Read It In The Standard

## SUBSCRIPTION ORDER FORM

for  
**THE CHELSEA STANDARD**

BY MAIL DELIVERY - ONE YEAR \$10; ELSEWHERE IN U. S. \$12.50

Name \_\_\_\_\_  
Address \_\_\_\_\_  
City \_\_\_\_\_ State \_\_\_\_\_ Zip \_\_\_\_\_

If you are not presently a subscriber, receiving your Standard by mail,

Fill out form, clip and send with payment in advance to  
THE CHELSEA STANDARD, 300 N. MAIN, CHELSEA 48118

**EXCLUSIVE**

**SATELLITE**

DELIVER TO YOUR HOME

512 N. Main

ANN ARBOR

769-0198

**Blindview**

LOYS TV





**JERRY'S SHELL**, of Stockbridge, took second place in the Chelsea Recreation Department's slow pitch league with just two losses on the season. In the front row, from left, are Lisa Fletcher, Cheryl Holloway, Rhonda Allen, hotgirl Shannon Allen, Linda Topping, Mary Klink, Sherry Sawyer and Tonya Corser. In the back row, from left, are coach Ron Miller, Bonnie Carr, Jo Jo Kitley, Charlene U'Ren, Mary Canby, Tracy Taylor, Debbie Lobinski and coach Larry Carr. Missing from the photo are players Rhonda Lapota and Yvonne Harrison.



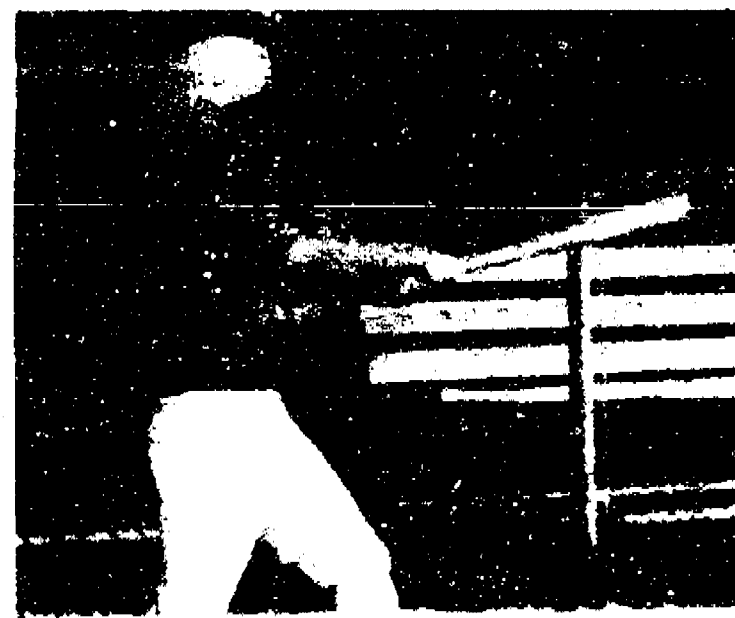
**PARENTS OF CHAMPIONS** DEFENDED their hitting, running, and fielding skills at Dana Field in Veterans Park, Thursday, Aug. 21, as the Dodgers, champion team in the 1986 Chelsea Little League faced the parents in a contest on the diamond. In the photo, snapped just before the first ball was tossed out, front row from left, parents are Pam and Jan Zimmermann, Norma Jean Tripp, Kathy Gibson, Sharon Grant, Guss Gorrigan and Nancy Brown. Standing in the back row, left to right, are Andy Zeigler, Terri Eiler, Darlene Johnson, Gary Johnson, Craig Brown, Jimmy Gorrigan and Doreen

McCalla. Kathy Zeigler is missing from the photo. Coach Grant successfully predicted a win for his boys. The score was 8-6, with the boys leading. The parents put up a valiant struggle, everyone had a fine time and most are already looking forward to next season. The weatherman played havoc with a team picnic planned recently, but the group accepted an invitation to go "undercover" at the fire station where firefighters were called out. Everyone enjoyed the unexpected turn of event, coach Grant explained.

**Men's Slow Pitch  
SOFTBALL  
TOURNAMENT**  
**Sat., Sept. 6 & Sun., Sept. 7**  
\*90<sup>th</sup> entry fee  
Dana Field, Chelsea  
Hit your own ball!  
Phone Richard, 426-2874

**FALL LEAGUES  
NOW FORMING**  
THERE IS STILL TIME to sign up for FALL LEAGUES  
Don't miss the fun and excitement of league competition!  
We have spots available for individuals or teams on:  
**SUNDAY**.....Mixed Leagues, 3:00, 5:45, 8:00 p.m.  
4 per team (2 male and 2 female)  
Bowl every other Sunday.  
**MONDAY**.....Men's League, 6:30 & 9:00 p.m.  
5 per team  
**TUESDAY**.....Ladies League, 9 a.m., 4 per team  
Men's League, 8:30 p.m., 5 per team  
Ladies League, 8:30 p.m., 3 per team  
**WEDNESDAY**.....Senior League, 1:00 p.m., 3 per team  
Ladies League, 9:00 p.m., 4 per team  
**THURSDAY**.....Ladies League, 12:30 p.m., 4 per team  
Men's League, 6:30 p.m., 5 per team  
Mixed League, 9:00 p.m., 4 per team  
**FRIDAY**.....Mixed League, 12:30 a.m., 3 per team  
LATE SHIFT WORKERS-THIS IS IT!  
RELAX AFTER WORK WITH BOWLING  
Mixed Leagues, 6:45 and 9:00 p.m.  
4 per team (2 male and 2 female)

**BOYS-GIRLS**  
**SATURDAY**.....Youth Leagues Start Sept. 6  
ALL NEW "BUMPER BOWLING"  
for ages 3-6, Saturday, 9:00 a.m.  
YOUTH Ages 6-8 (Bantams) 11:00 a.m.  
Ages 9-11 (Preps) 11:00 a.m.  
Ages 12-18 (Jr./Major) 9:00 a.m.  
For More Information on Our Fall League Sign-Up  
Call Today - or Stop and See Us  
YOU'RE ALWAYS WELCOME  
**CHELSEA LANES, INC.**  
Featuring the Mark IV Lounge  
1180 M-52, Chelsea Ph. 475-8141



**JAYSON LIEN** SWINGS LEVEL for a hit during the game in which the Dodgers, Chelsea 1986 Little League Champions challenged their parents, Thursday, Aug. 21, at Dana Field. Dodgers claimed an 8-6 victory over the parents.

**Inverness Ladies League  
Has Award Luncheon**  
Inverness Ladies League Award Luncheon was held at Inverness Golf Course club house on Tuesday, Aug. 19.  
Award winners were as follows.  
First place team: Rose McGibney and Janet Smith.  
Second place team: Ruby West and Mary Nadeau.  
Third place team: Betty Korgilius and Olga McCormick.  
Most birdies: Marj Daniels.  
Most games won: Rose McGibney.  
Also, prize winners for the final day scramble were announced.  
Low net went to Helen Wilson, Alice McGinn, Janet Smith and Bea Parish.  
Low gross: Nancy Brown, Ann Nuttle, Dorothy Hale and Eileen Brown.  
Low putts: Martha Heutteman, Anita McDonald, Lillian Conklin and Yolaine Carignan.

**Vets Park Flag  
Is Seventh Stolen**

Seven American flags have been stolen in Chelsea since May. The latest one, taken from Veterans Park, had been recently donated by Chelsea VFW Post No. 4076. It was last seen on Wednesday, Aug. 20 and was reported missing on Saturday, Aug. 23.  
Chelsea Police Chief Lenard McDougall said he believes kids are stealing the flags for pranks. He urges all area parents to be suspicious of a sudden interest in patriotism on the part of the child, especially if flags begin appearing at home.  
"I think somebody is out there with a large flag collection," McDougall said.

Subscribe to  
The Chelsea Standard!



"IF YOU CAN'T SAY, run and roll in the dirt on the ball field beside the one where the game is," decided boulder Kyle Brown. He shows the results in this photo! A couple of mothers reminded his condition. They took him to the hand pump and doused him to rid the youngster of the lime, wiping him dry again. He had as much fun as anyone when the Dodgers, Chelsea Little League 1986 Champions challenged their parents, Thursday, Aug. 21, at Dana Field. The Dodgers won, 8-6, reported coach Earl Grant. He commended the parents for their fine and consistent support during the entire season.

**State Fish-Off  
Entered By  
Local Anglers**

Dennis Andrew and three colleagues will travel to Charlevoix for the State Fish-Off later this month.  
Sponsored by Dexter Video, Andrew and the other three anglers on the team have been fishing with the Pro-Bass program throughout the past few months.  
VCR's of fishing expedition information and tips on fishing lures and locations have been extremely valuable to the team of anglers and their cohorts, Andrew said.  
A deputy with the Washtenaw County Sheriff's Department, Andrew says fishing is a consuming hobby with him.  
He explains the men who will travel to the State Fish-Off are appreciative of the local sponsorship which makes their trip possible.  
He promises a full report on the team's activities at Charlevoix, Sept. 26-27.

In 1981 registered Michigan boat owners spent over a billion dollars on boating in Michigan.

**Adult Softball**

The following are the results from the final week of play in adult softball leagues sponsored by the Chelsea Recreation Department. All games were played the week of Aug. 18.

**Women's Softball, 1986  
Final Standings**

	W	L
Chelsea State Bank	15	1
Jerry's Shell	15	2
BookCrafters	10	6
Jiffy Mix	10	6
CATS	8	8
Big Boy	9	11
Gentini	4	12
McDonald's	2	14
Citizen's Trust	0	16

Jerry's Shell 28,  
Chelsea Big Boy, 2-

Mary Klink was the winning pitcher. Leading Jerry's hitters were Cheryl Holloway, Rhonda Allen and Bonnie Carr, who were each 4-4. Holloway had a home run and five RBIs. Allen hit a home run, triple, and knuckled in four runs. Carr had two RBIs and scored four times. Lisa Fletcher had three base hits and scored twice. Tracy Taylor and Jo Jo Kitley were each 3-4.

CATS 12, BookCrafters 3-  
Renee Kornatz hit a solo home run for CATS.

Chelsea State Bank 10,  
Jiffy Mix 3-

Shelley Weber was the winning pitcher. Leading Bank hitters were Anne Weber, with two hits and two runs, Sue Pickell, two doubles, Karen Guenther, two hits, including a triple, Jennifer Guenther, three hits, Lori Schanz, two hits, and Julie Koch, three hits.

**Men's Softball**

Standings as of Aug. 26  
(Season Ends Aug. 30)

Division I	W	L
Chelsea Industries	23	0
Tri-County Merchants	17	4
Broderick Shell	14	8
Sportman's Bar	14	7
Cavanaugh Clams	12	12
Stockbridge Merchants	8	15
Wolverine	8	14
NAPA	7	14
Hanson & Sons	7	14

**DIVISION II**

	W	L
A & W	20	4
BookCrafters	15	7
Woodshed	13	9
Big Boy	10	13
Vogel's Party Store	8	13
Jiffy	7	13
Klink & Deait	6	15
Chelsea Industries, II	1	26

A&W 14,  
Stockbridge Merchants, 13-  
Jeff Mead was the winning pitcher.

Sportman's Bar 8,  
Chelsea Big Boy 3-  
Mark Wiseley was the winning pitcher.

pitcher Rich Bobo was 4-4 with a double and Ray Dotts and Mark Wiseley were each 3-4.

Chelsea Woodshed 7,  
Broderick Shell 6-

Dick Miller was the winning pitcher. Leading Woodshed batter was Marc Boote, 4-4 with a two-run homer and the game tying hit in the bottom of the seventh inning. Dennis Schaier drove in Paul Miller with a sacrifice fly in the seventh to win the game.

A&W 16, Chelsea Big Boy 4-  
Gary Leonard was the winning pitcher.

BookCrafters 10, NAPA 2-  
John Evans was the winning pitcher. Mark Schwab and Mike Campbell were each 3-4 and Tim Hampton was 1-1 with an RBI.

Sportman's Bar 12,  
Hanson & Sons 3-  
Mark Wiseley was the winning pitcher.

BookCrafters 5,  
Wolverine Food 2-

John Evans was the winning pitcher. Rick Furman, Jerry Pitch and Dan Walz were each 2-3. Furman hit a home run. Mike Campbell and Jerry Pitch turned a double play.

Sportman's Bar 9,  
Cavanaugh Clams 6-  
Norm Lampe was the winning pitcher.

**Hudson Mills Offers  
Two Nature Programs**

Two programs will be held at Hudson Mills Metropark near Dexter Aug. 30 through Sept. 1. "Life Inside the Huron," a hands-on look at the inhabitants of the Huron River, especially for young naturalists, will be held on Saturday, Aug. 30 at 12 noon. "Evening Bike Tour," a naturalist-led bike tour through forest and fields, will be held on Monday, Sept. 1 at 6:30 p.m. Persons must have a bike or rent one from the park.  
Participants should meet at the Activity Center Building. Both programs are "free," except for bike rentals. Advance registration is required.  
For information, registration, contact Hudson Mills Metropark, Ph. 426-8211 (Park Office) or 1-800-24-PARKS (toll-free).

**Don't be a  
heartbreaker**  
Stop  
smoking.

**HOME-GROWN  
SWEET CORN**  
For Freezing or Canning

<b>RED-HAVEN PEACHES</b>	<b>GEE MELONS</b>
<b>ICE COLD WATERMELON</b>	<b>Order Now for PEPPERS</b>

**Home-Grown  
TOMATOES**

**WHOLESALE & RETAIL  
NEW HOURS: 8 a.m. till 9 p.m. Every Day.**

**GEE FARMS**  
14928 Bunker Hill Rd., Stockbridge (517) 769-6772  
FARM BAKED DOUGHNUTS AND BREAD  
HAND-DIPPED ALL-STAR ICE CREAM

**HEATING INSPECTION BEAT THE RUSH**

<b>GAS FURNACE Clean &amp; Check</b> 1. Inspect Heat Exchangers 2. Inspect & Clean Burners 3. Inspect Blower 4. Check & Test All Safety Controls 5. Check & Test Thermostat 6. Check Fan Belts 7. Oil Motors & Bearings (Blower cleaning extra) Up to 1 hour labor, parts extra and normal labor rates apply past 1 hour. <b>\$49.95</b> Reg. \$65.00 Expires 1-31-87	<b>OIL FURNACE Clean &amp; Check</b> 1. Inspect Heat Exchangers 2. Inspect Blower 3. Check & Test All Safety Controls 4. Check & Test Thermostat 5. Check Fan Belt 6. Oil Motors and Bearings 7. Adjust Burner for Greater Efficiency 8. Check Flue Pipe & Base of Chimney 9. Check & Set Ignitor Gap 10. Replace Nozzle (included in Price) 11. Replace Oil Filter (included in Price) (Blower cleaning extra) Up to 1 1/2 hour labor, parts extra and normal labor rates apply past 1 1/2 hour. <b>\$79.95</b> Reg. \$99.00 Expires 1-31-87 <b>gleason &amp; raus co., inc.</b> HEATING, COOLING & COMMERCIAL REFRIGERATION Sales & Service
---	--

**SAVE  
\$10 OFF  
HEATING  
EMERGENCY CALL**  
**24 HOUR  
EMERGENCY  
SERVICE**  
One Coupon Per Household  
Expires April 30, 1987  
**CALL 426-4776**

**10% SENIOR CITIZEN DISCOUNT**



**CHELSEA FIRE DEPARTMENT** rescue workers gave a demonstration of their expertise to area children who participated in Youth Appreciation Day at Chelsea Lanes last Saturday, Aug. 23.

Bill, the mascot of the YABA, was also on hand to help out.



**THANKS FOR A JOB WELL DONE.** Chelsea Lane owner Ed Greenleaf tells Bill, the mascot of the Young American Bowling Alliance, during last Saturday's Youth Appreciation Day at Chelsea Lanes. The event was organized to both entertain and inform children ages 3-18 in the Chelsea area and surrounding communities.

## September Goose Hunt Announced

The Department of Natural Resources (DNR) has announced a Sept. 3-8 hunting season on local giant Canada geese in the State's Lower Peninsula.

This experimental season is the culmination of an eight-month effort by the DNR working with the Michigan Fish and Game and U.S. Fish and Wildlife Service to obtain additional controls on fast-growing local goose populations.

Michigan and Massachusetts are the only two states that will be offered the opportunity this fall to test early September hunting as another solution for local goose control. DNR wildlife biologists estimate Michigan's local birds numbered 35,000 in 1985 and predict the figure may reach 70,000 this fall.

The daily limit for the hunt will be two Canadas and three in possession. Shooting hours will be one-half hour before sunrise to sunset, or all time in the Lower Peninsula.

Because Federal authorities were concerned about unintentional harvest of early-arriving migrant geese from Canada breeding grounds, there will be some closed areas on state lands during this early hunt. Check with Waterfowl Area Headquarters for listing of scattered closed areas.

In spite of the closures, 95 percent of the Lower Peninsula will be open to hunters, said Jerry Mertz, DNR Waterfowl Specialist. Including most parts of state recreation areas and wildlife areas, state forest lands, and private lands with owner's permission.

Though state recreation area boundaries are posted with signs prohibiting shooting of firearms from April 1-Sept. 14, these rules will not apply to Canada goose hunters during the Sept. 3-8 season. Entry into established hunting areas or recreation areas is prohibited, just as in the regular waterfowl season.

Because the season was confirmed by Federal authorities so late in the summer, a waterfowl guide will not be available for this experimental season. Hunters are advised to contact DNR Regional or District Offices for additional information and a brief handbook on the season.

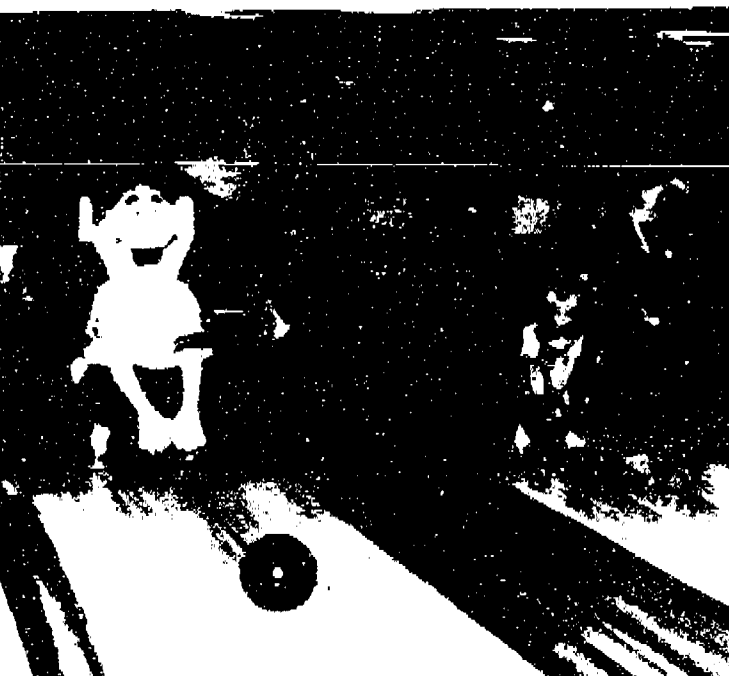
Please Notify Us of Any Change in Address



**VICKY WURSTER**, co-ordinator of last Saturday's Youth Appreciation Day at Chelsea Lanes, laughs it up with Bill, the mascot of the Young American Bowling Alliance. More than 600 children ages 3-18 attended the first annual event, which featured free games, food and a variety of safety programs.



**MARINE SAFETY OFFICERS** of the Washtenaw County Sheriff's Department, David Egler and Ron Brown, share a minute with "Bill," the mascot of the Young American Bowling Alliance during Youth Appreciation Day at Chelsea Lanes Saturday, Aug. 23. Egler and Brown gave a water safety program in the afternoon.



**BOWLERS OF ALL AGES** and sizes took part in the first annual Youth Appreciation Day at Chelsea Lanes on Saturday, Aug. 23. The youngsters learned a lot about a number of safety issues, and amused themselves with free bowling, games and food. On the left is Bill, the mascot of the Young American Bowling Alliance, who came all the way from Wisconsin for the event.



America's first mustard is said to have originated in Philadelphia by Benjamin Jackson. He advertised in the *Philadelphia Evening* in 1768 that he was the "original" establishment of the mustard manufactory in America.

## Chelsea Lanes Jammed For Youth Event

More than 600 children age three to 18 took part in the first annual Youth Appreciation Day at Chelsea Lanes despite a rainy beginning on Saturday, Aug. 23.

Hotdogs, popcorn, and soft drinks, as well as video and pinball games, pool and bowling were available free of charge. The idea of the program was to reach out to five area communities and to involve as many community organizations as possible.

The program was co-ordinated by Vicky Wurster of Chelsea Lanes.

A number of safety programs were presented during the day. Among them were "Seatbelt Safety" by Chrysler Proving Grounds; "Child Abuse and Runaways" and "Marine Safety and Water Safety" by the Washtenaw County Sheriff's Department; "Bike and Drug Safety" and "Drinking and Driving" by Chelsea Police Department; "Survival Flight Helicopter" by University of Michigan; "Home Fire Safety" by University of Michigan Burn

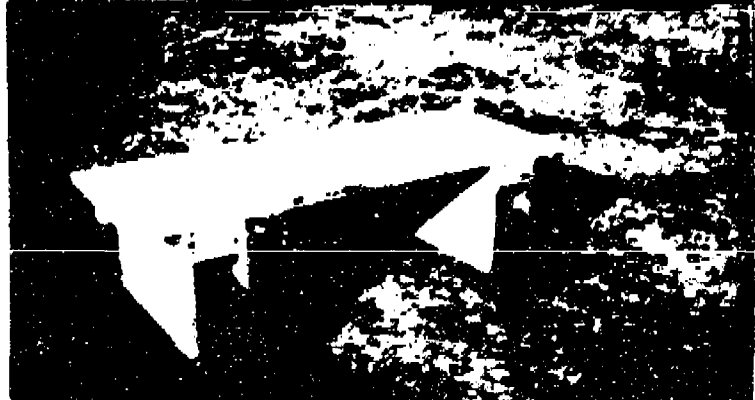
Center; "Physical Readiness for Sports" by Chelsea Family Practice Center; and demonstrations by the Chelsea Fire and Rescue Departments.

All programs and food were donated. Irish Hills Meat Co. provided the hot dogs, Chelsea VFW Post No. 4878 supplied popcorn, Way Bakeries of Jackson supplied buns, Coca-Cola of Jackson provided soft drinks, and freemall and video play was given by Incity Vending of Jackson.

In addition, there was a visit by "Bill," the Young American Bowling Association mascot from Grandville, Wis.

In 1978, there were about 6.7 million children in one-parent families; by 1985 almost 13 million children were in such families. Most of these children are being raised by their mothers, according to a fact sheet on working women published by the Women's Bureau of the U.S. Department of Labor.

Please Notify Us of Any Change in Address



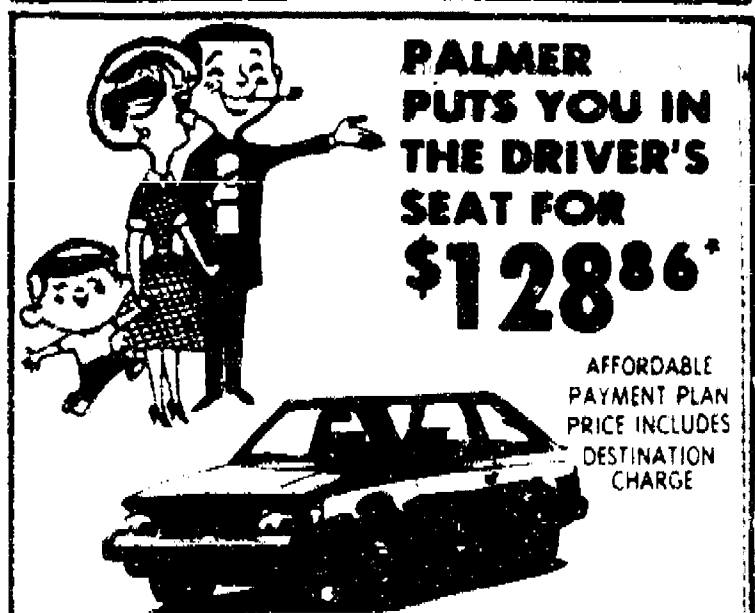
Arthritis in knees, sore back from bending? Then let Gordon EAS-ALL help you. It lets you plant, weed & pick strawberries and many other crops. And the pain of many household chores while sitting on your

**EAS-ALL**  
Stop by and see my new display!

Customer orders... design your own... and I will build

## HOLLY-HILL, INC.

21000 Super Rd., Chelsea Ph. 475-6234  
Hours: Monday, 9 a.m. - noon, Saturday, 1 p.m. - 5 p.m., and by appointment.



**1986 ESCORT**  
FRONT WHEEL DRIVE HATCHBACK

Closed-end lease, 36 months, 48 mo. lease. Total payments: \$1,185.28. \$100.00 down, \$100.00 deposit plus \$1.00 monthly payment in delivery plus tax, title, license, insurance, dealer has no obligation to purchase car at lease end but may arrange to purchase car at the option of the dealer. Total mileage allowed, 30,000 miles. Mileage in excess of 30,000 will be charged to lessee. Lessee is responsible for maintenance and repairs.

## PALMER FALS

OPEN: MON. AND THURS. 8:30 A.M. 'TIL 9:00 P.M., TUE., WED., AND FRI. 8:30 A.M. 'TIL 6:00 P.M., SAT. 'TIL 1 P.M.  
SERVICE OPEN SATURDAYS TOO!  
In Washtenaw County since April 15th, 1912  
**CHELSEA 475-1301**

**PARISHO & COMPANY P.C.**  
Certified Public Accountant  
**JAMES (JAY) W. PARISHO, C.P.A.**  
Two locations to serve you:  
1905 South Main, Chelsea, Mich. P.O. Box 251  
Ann Arbor, Michigan 48106-0251  
475-5656  
313 475-5642  
We Service: Personal & Corporate Tax Returns, Financial Planning, Tax Preparation & Consulting, Financial Planning.  
Appointments available Monday through Saturday

**FOR PROFIT**  
**FEED**  
See us for feed needs!  
Feed Formulas Tested, Proved To Get Results  
Extra proteins, vitamins and minerals in proper balance scientifically blended, make our feeds real profit producers for you  
**Farmers' Supply Co.**  
Phone 475-1777

**UNADILLA STORE AND DELI**  
SINCE 1873  
OLDEST STORE IN LIVINGSTON COUNTY  
IN HEART OF DOWNTOWN UNADILLA  
OPEN ALL YEAR - 7 DAYS 498-2400  
WE HAVE GROCERIES - BEER - WINE - LIQUOR - ICE CREAM - WOOD - FISHING NEEDS - GAS - OIL - A LITTLE OF EVERYTHING  
Support your local farmer, buy our REAL ice cream & dairy products.  
DELI IS OPEN  
RENIE'S HERE - HOME-MADE PIZZAS  
ALWAYS-BIG SUBS, BREAD STICKS, PIZZA SLICES  
SMALL STUFFED PIZZAS  
DELI HOURS ARE FRI., SAT., & SUN. FROM 5 P.M. TILL CLOSING  
REGULAR, CHOCOLATE, SALAD & VEGETARIAN PIZZAS  
OUR ICE CREAM PARLOR IS OPEN  
REAL ICE CREAM - NEW HOME-MADE WAFFLE CONES  
HOT FUDGE SUNDAES (you can eat dish and all)  
16 FLAVORS OF ICE CREAM & PENNY CANDY  
BEITY LITTLE, Owner

**WAVE BREAKER SYSTEMS**  
21000 Michigan, P.O. Box 280, Pinckney, MI 48169



## The Fair - Through the Eyes of A Child

An excitement that I cannot explain,  
Suddenly comes over me,  
When Mom says, "The fair is coming to town,"  
For all of us to see.

Come in, the gate is open wide,  
The tide lights blink off and on,  
They seem to pull me toward them,  
"Let's see the animals first," says Mom.

And as we enter that great big barn,  
What's the first thing that I see,  
A long, swishing tail on the back of a cow,  
And slowly she turns and moos at me.

A farmer is squeezing something below,  
And out comes milk pure and white,  
But that big cow doesn't like it at all,  
She's putting up quite a fight.

Next comes the sheep, it sniffs at me  
And I gently touch its back.  
It feels so thick and fluffy,  
"Hey Mom, why is this sheep white and black?"

Baaaa! I hear the goat in the next pen,  
And it climbs upon the gate,  
I can tell he looks real hungry,  
But he'll just have to wait!

The horses look so sleek and tall,  
With the cowboys and their boots,  
And there are even riders who look  
Like jockeys in millionaire suits.

What's that in the corner,  
Laying there so far and pink,  
"A pig," says my Dad,  
"Not too close, 'cause they stink."

On to the cages with the small animals,  
What's that funny feathered thing?  
A crown on top of a chicken's head?  
And fluffy feathers for a wing?

Oh, there's one of my favorite things,  
With ears flopped and touching the floor,  
A bunny rabbit is what I see,  
Oh look inside, there seem to be a hundred more!!

Oh look Mom, at the end of the barn,  
Hurry follow me this way,  
There's a mom and a little one like you and me,  
Oh, this is the baby animal display!!

Finally, we stepped outside,  
"Cause you know in the back of my mind,  
Although I loved seeing all the animals,  
The rides are more my kind."

The ferris wheel gave me quite a turn,  
It took me up so high,  
And it wouldn't be for Dad sitting next to me,  
I just know I would start to cry.

Next, I went on the nearest ride,  
Over the praries way out west,  
The Merry Go Round with its horses,  
Is the ride I like the very best.

It turned my round and up and down,  
And each time I had to wave,  
At my Mom and Dad standing there,  
Boy, I was feeling so brave.

I think I'll give this ride a try,  
To me it looks pretty slick,  
All the big kids ride the Tilt-A-Whirl,  
But all I'm getting is sick!!

Well, the "OOO-AHH's" were going to start quite soon,  
So we went and got something to eat,  
And the caramel apples and cotton candy,  
Were a welcome little treat.

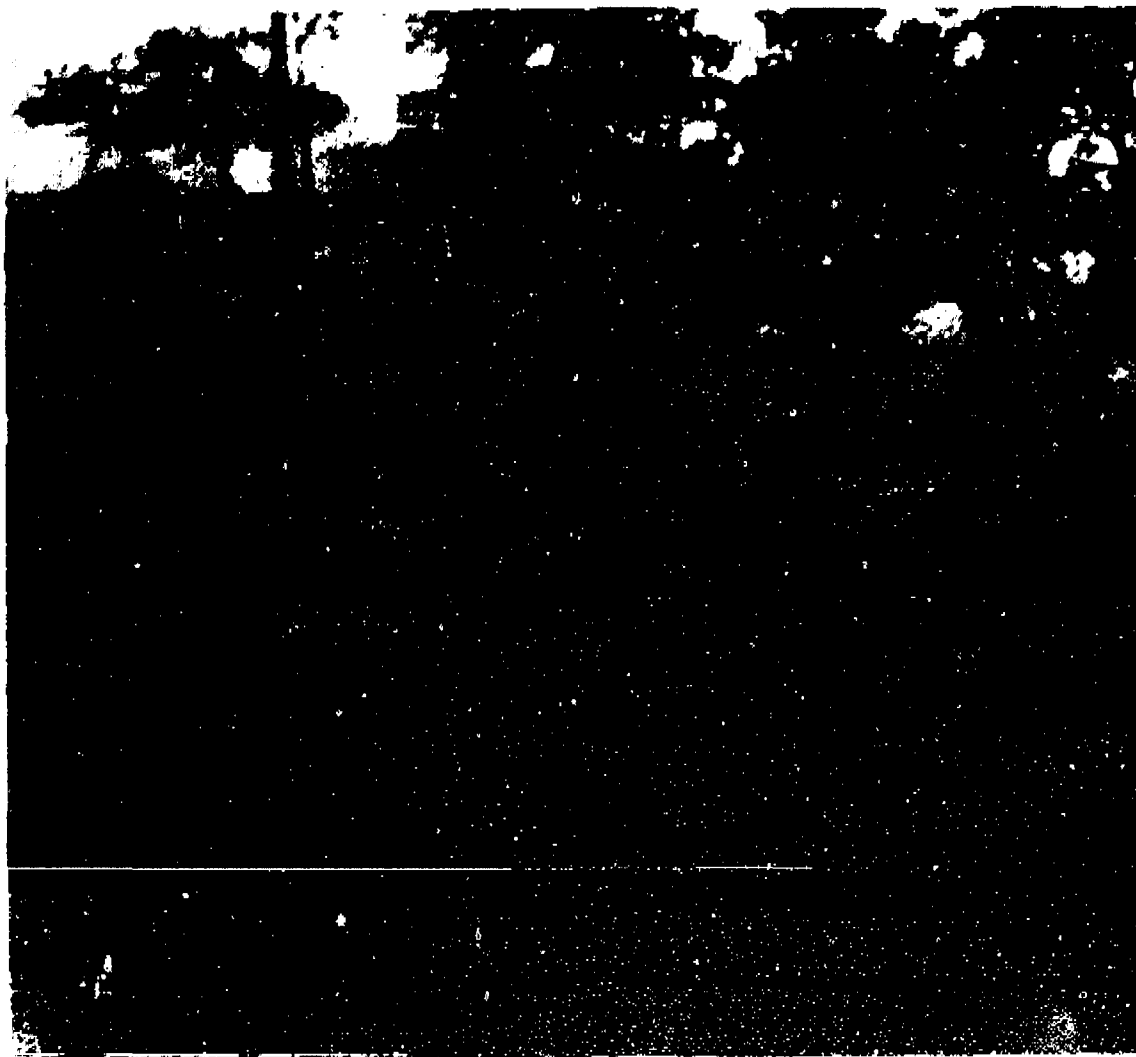
The sky then exploded with beautiful lights,  
OOO's and AHH's were heard from the crowd,  
The fireworks were a beautiful sight,  
And the explosions were so loud.

The games on the midway looked thrilling,  
And a stuffed animal is what I longed for,  
So my Dad took a chance and knocked over some cans,  
A pink dog!! Who could ask for more?

Mom said it was time to leave this neat place,  
As I rested upon my Dad's knee,  
With half eaten candy and a balloon on my wrist,  
Holding tight to my pink doggie.

It was fun, I got scared, and even got sick,  
Of this there is no doubt,  
But I'd come back tomorrow and stay all day,  
Isn't that what the fair's all about!!?

— Patricia H. Zangara



"SMOKE" a team composed mostly of Chelsea area residents, was the class E district champion in a tournament played July 25-26 in Ann Arbor. The team will compete in the state tournament this week-end in Port Huron. In winning the tournament, Smoke outscored their opponents 49-15 in six games and finished undefeated, despite playing in two extra-inning games. Terry Seltz was the team's leading hitter, going 12-24 with an on-base percentage of .646. The

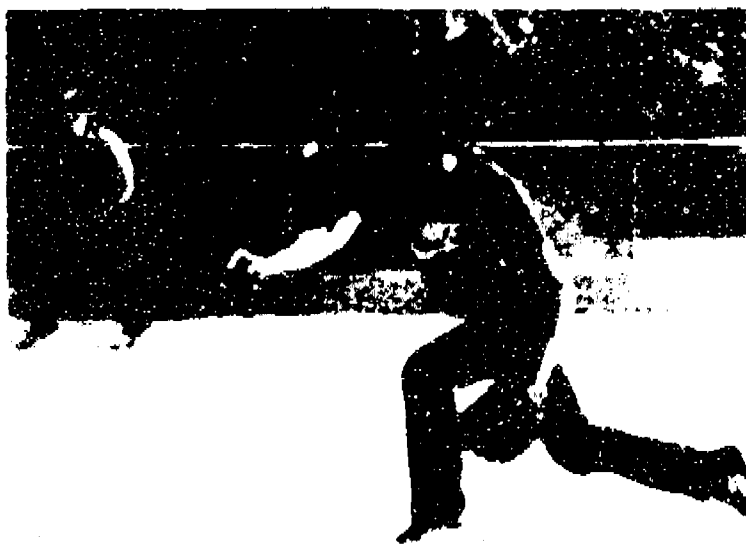
team's defense was outstanding during the tournament and pitcher John Lixey, who pitched five games, tossed 22 consecutive scoreless innings. Smoke is a self-sponsored team. In the front row, from left, are John Lixey, Terry Seltz, Doug Hillman, Brian Schultz, Dale Schoenberg and Jim Hohmann. In the back row, from left, are Dan Alber, Chuck Moore, Craig Cullre, Jeff French, Tom Lixey, Roger Young and Dale Forcier.

**People of all ages die of heart disease and stroke.**

With your help, we're out to change that.

**American Heart Association**

Standard Want Ads Get Quick Results!



PITCHING FOR THE PARENTS of the Dodgers, Chelsea's 1986 Little League Champions, Russell Weid concentrates on putting strikes across the plate. Parents joined the boys for a special end-of-the-season game, Friday, Aug. 22, at Dana Field. Little League players had an 8-4 win.



On the average, the human body has twenty square feet of skin, nine thousand taste buds, five million hairs, and 13 billion nerve cells.

## DRAINS and SEWERS CLEANED ELECTRICALLY

**PROMPT SERVICE**

**SEPTIC TANKS-Cleaned, Installed, Repaired DRAINFIELD & OTHER EXCAVATING**

•RESIDENTIAL •COMMERCIAL •INDUSTRIAL

**BOLLINGER SANITATION SERVICE**  
PHONE (313) 475-2077

## POMA'S PIZZA

137 Park Street, Chelsea  
Ph. 475-9151

HOURS: Mon., 4 p.m. to 10 p.m.  
Sun., Wed., Thurs. 4 p.m. to 11 p.m.  
Fri. & Sat., 4 to 12 p.m.

"We Knead Your Dough"

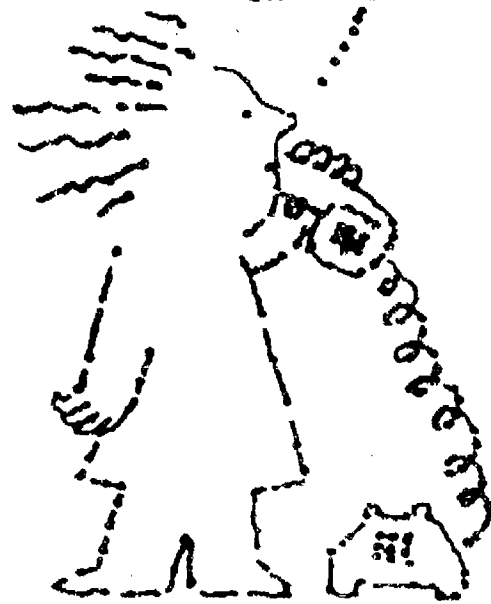
We also have thin crust pizza on request.

**CLIP THIS COUPON**

**\$1.50 OFF**  
ON  
**ANY LARGE OR EXTRA LARGE PIZZA**

one coupon per pizza  
Offer good thru Sept. 2, 1986

Hello,  
Sesquicentennial people...  
this is Alice Gwynn. Listen,  
Aunt Sara from Phoenix loved  
the Governor's personal invitation  
to Michigan's family reunion, but  
wouldn't you know Aunt Ruth  
found out about it and...oh could you?  
You're a dear...and then there's  
Uncle Russell...and my best  
girlfriend Judith...and my  
other best girlfriend  
Ramona...



## A Michigan Family Reunion.

Of course Aunt Sara loved the invitation. Who wouldn't like feeling so special that someone had the Governor invite them for a visit. And really, don't worry about hurting anyone's feelings because Governor Blanchard will invite as many people as you'd like to have come. Plus they'll get lots of information on why Michigan is such a wonderful place to spend a vacation. There'll even be a little something in the mail for you — like a copy of Michigan's Travel Planner. That way, you'll know all the when's and where's of what's happening in Michigan. Who knows, between you and the Governor, this may turn out to be Michigan's best reunion ever.

Call toll free  
**1-800-MICH150.**



**M!CH!GAN**

A Michigan Family Reunion.

Fill out this coupon and send to:  
Michigan Family Reunion  
P.O. Box 33159  
Detroit, MI 48232

Send our invitation to:

Name \_\_\_\_\_

Address \_\_\_\_\_

City \_\_\_\_\_ State \_\_\_\_\_ Zip \_\_\_\_\_

On behalf of our family:

Name \_\_\_\_\_

Address \_\_\_\_\_

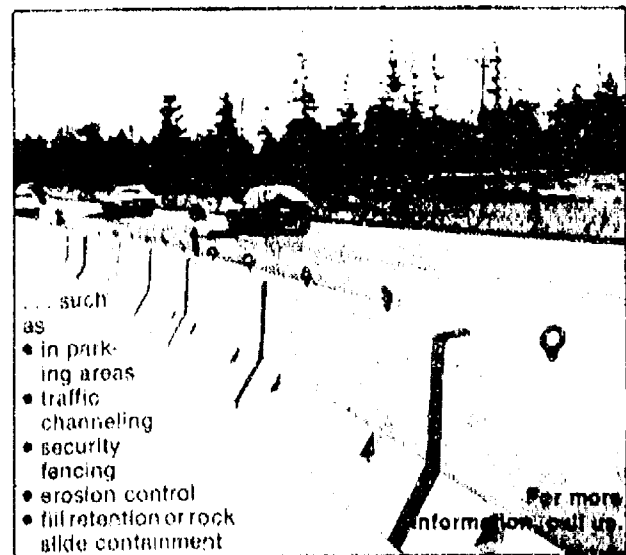
City \_\_\_\_\_ State \_\_\_\_\_ Zip \_\_\_\_\_

Free  
travel information sent  
with every invitation.

A Michigan  
Family Reunion

## Precast Concrete Safety Barriers

For vehicle control and other uses . . .



**WAVE BREAKER SYSTEMS**

(313) 426-5500

2200 McGregor P.O. Box 289 Pluckney, MI 48169





# LITTLE WANT ADS! BIG PLUSES FOR BIG RESULTS!

Washtenaw County's Busy Marketplace . . . Quick, Economical Results . . . Give 'em a try!

<b>Real Estate</b> <b>HALF MOON LAKE</b> 3 bedroom waterfront home. Nutty pine paneling, lovely fireplace, deck off master bedroom. State land view from dining area. Chelsea schools \$81,000. Call Mary Jane Tiergen 994-3400 even 475-7414.	<b>Help Wanted</b> <b>SUBSTITUTE TEACHERS</b> Wanted for <b>MANCHESTER COMMUNITY SCHOOLS</b> Please Contact <b>428-7300</b>	<b>Help Wanted</b> <b>CLERK</b> Temporary position available for 4 months to do general clerical duties including filing and answering telephone. High school diploma or equivalent and knowledge of education and insurance necessary. Typing helpful but not necessary. Contact Judy Hoberster at 475-9171 at the University of Michigan Family Practice Center in Chelsea. A Non-Discriminatory Affirmative Action Employer	<b>Help Wanted</b> <b>General Labor</b> Good reliable workers needed to do long-term assignments. Moving to electronic assembly. Call <b>J. Martin</b> <b>Temporaries today</b> <b>994-1244.</b>	<b>For Rent</b> <b>HOUSE FOR RENT</b> 2 bedrooms, central air. Near downtown and schools. References and deposit required. \$420 a month. Call 475-2086 after 3 p.m. weekdays anytime week ends.	<b>Bus. Services</b> <b>Carpentry Construction</b> <b>BROUGHTON MODERNIZATION CO.</b> Vinyl & Aluminum Siding Windows & Doors Additions & Alterations LICENSED & INSURED <b>475-1626</b>	<b>Bus. Services</b> <b>Excavating</b> <b>LITTLE WACK EXCAVATING</b> Licensed & Insured Basements Drains/Ditches Digging/Building Trenching Block Dirt Sand Gravel Paul Wackenhut (313) 428-8025 23H
<b>Animals &amp; Pets</b> <b>3 ADORABLE KITTENS</b> Gray, gray and white, calico. To be given to a good home. Ph. 475-1470 between 8 a.m. and 9 a.m. or evenings after 7 p.m. <b>SPAY/NEUTER CLINIC</b> of the Huron Valley Humane Society Ph. (313) 662-4365 10 a.m. to 4 p.m. <b>PERINGESE MALE</b> 1 year AKC registered \$150 or best offer. Ph. 475-1429 <b>POODLE PUPPY</b> - Female black. No papers. \$50. Call 498-7759 evenings. <b>GERMAN SHEPHERD PUPPIES</b> AKC - 2 left 1 male and 1 female. Black tan and silver. 475-1706.	<b>Burger King</b> <b>inside Briarwood Mall</b> (next to the movies) • Flexible Hours (store hours are from 9:30 a.m. to 9:30 p.m.) • Shift Premiums for day and evening crews • Full-time available with benefits • Chance for advancement • Apply in person	<b>Typist</b> We are in need of a mature individual with good typing ability and speed about 50 wpm or better. Accuracy and attention to detail essential. Competitive wages and excellent company benefits. Interested applicants please apply in person to <b>BookCrafters</b> 140 Buchanan Chelsea MI 48106	<b>Jobs Available</b> We have the following positions available for reliable people who would like to work in the Dexter, Pinckney, Chelsea and Ann Arbor areas. - Assembly - Baking - Packaging - Shipping/Receiving - Machine Operators You must have a phone in your home and reliable transportation to be considered. Call us today for an appointment.	<b>2-BEDROOM RANCH</b> type home with 2-car garage. Good country location with large yard and trees. Manches school. Married couple or married couple with not more than 2 children. No pets. Available Sept. 10. Good references and security deposit required. Serious inquiries only please. Ph. 428-7733. <b>2-BEDROOM APARTMENT</b> - Hard wood floors, quiet street. Stockbridge Village. \$395. Chuck Walters, Realtor. 475-2882. <b>WAREHOUSE FOR RENT</b> - 1375 sq. ft. 11 ft. ceiling, truck bay \$250 per month. Call Jack at Merkle's 475-8621. <b>CAR RENTAL</b> by the day, week and week or month. Full insurance coverage, low rates. Call Jackie Ludke at Palmer Motor Sales 475-1301. <b>FOR RENT</b> - Paw Service Center for meetings, parties, wedding receptions, etc. Weekdays or week ends. Contact Mark Strupish phone 426-3529. <b>COMMERCIAL SPACE AVAILABLE</b> - Chelsea area. Call 475-9594 for details.	<b>R. L. BAUER Builders</b> LICENSED and INSURED Custom Building Houses - Garages - Pole Barns Roofing - Siding - Concrete Work FREE ESTIMATES <b>Call 475-1218</b>	<b>BECKWITH EXCAVATING</b> BULLDOZING - GRADING - HAULING Yards and Basements Ponds and Roads Great or Small You Call <b>(517) 764-0972</b>
<b>Lost - \$50 Reward</b> for <b>SHEPHERD HUSKIE</b> 14 wks old, furry black with tan paws, tan under chin. Last near Boyce Rd. and M-52. If you have any information, please call 475-7291.	<b>STUDENT or other responsible person</b> going to Ann Arbor each morning 8:00 to 8:30, to take 8-yr. old child to Miller Middle area (1 mile off M-14). 475-7956.	<b>EARN \$4.87 HR.</b> We need assistance in evaluating and responding to daily work reports submitted by our agents throughout the state. No experience necessary, paid to complete training. Work at home. For information send self-addressed stamped envelope 9x11 inches long to AWGA Dept. E Box 49204 Atlanta GA 30359.	<b>ANN ARBOR</b> 428-7272 <b>BRIGHTON</b> 227-1218 <b>Supplemental Staffing, Inc.</b> The Temporary Help People	<b>WANTED TO RENT</b> Professional, quiet clean and non-smoking woman needing an apt. References available. Call after 7 p.m. Ph. 475-7767. <b>RESPONSIBLE WOMAN</b> looking for apartment or duplex in the Chelsea area. Please call after 7 p.m. 475-7869. <b>PROFESSIONAL COUPLE</b> wanting to rent or rent with option, house in country with workshop or garage. Call Dick or Roseanne 1-429-7808.	<b>RON MONTANGE CONSTRUCTION</b> Full carpentry services rough and finish. Additions, remodeling and repairs. Replacement Windows. Concrete. Roofing and siding. Cabinets and Formica work. Excavating and Trenching. QUALITY WORKMANSHIP FREE ESTIMATES <b>475-1080</b>	<b>JERRY WHITAKER EXCAVATING</b> DOZER BACKHOE DRAGLINE and 10-YARD TRUCK POND DRAIN FIELDS BASEMENTS DRIVEWAYS SAND AND GRAVEL <b>CALL 475-7841</b>
<b>FOR LOST OR FOUND PETS</b> The Humane Society of Huron Valley at 662-5595 between 11 a.m. and 5 p.m. Sunday through Saturday, closed holidays. 3100 Cherry Hill Rd. Ann Arbor.	<b>IMMEDIATE WORK IN CHELSEA-DEXTER AREA</b> <b>MANPOWER</b> Will be accepting applications Aug. 26 thru Aug. 30 or <b>CHELSEA COMMUNITY FAIR</b> Register at Manpower Booth Apply Today Work Tomorrow! <b>665-3757 or 665-5511</b>	<b>RN's and LPN's and Home Health Aides</b> needed for continuing home care cases. Must have experience, references and transportation. Nursing Students welcome. Above average salary. <b>Call 971-6300</b>	<b>Child Care</b> <b>BABYSITTER</b> needed in my Dexter home. Monday thru Friday from 2:30 p.m. to 6 p.m. Phone 426-3088. <b>BABYSITTING</b> done in my Chelsea Village home. Big yard and playmates. Call anytime 475-3215. <b>MANCHESTER</b> Carolina's Corner offers quality licensed group day care. Meals, snacks and activities included. 313-428-8279. <b>EXPERIENCED CHILD CARE</b> in my 4-yr. old home. One opening for ages 3-6 yrs. Nutritious meals and snacks provided. Lots of TLC. Reasonable rates. References. 475-3147. <b>LICENSED DAY CARE</b> Full-time days 2 openings 1 year and up 7:30 a.m. to 5:30 p.m. Monday through Friday 2 miles from 475-8821. <b>WEEK HOPPER DAY CARE</b> Licensed activities, planned meals and snacks supplied. BS in Elementary Education. BA in Early Childhood Development. Ph. 475-3247. <b>BABY SITTER</b> needed in Chelsea Village home. Mon. Wed. Thurs. and every other Friday evening. Must have own transportation. Ph. 475-7706. <b>WORKING</b> mother needs reliable before and after school care for 2. Your home or mine. 475-2771. <b>CHILD CARE</b> needed for kinder, gartner mornings and after school. North school area. Call 475-8406 after 6 p.m. <b>EXPERIENCED CHILD CARE</b> in my Chelsea Village home. Opening for one full-time preschooler. Lots of TLC, reasonable rates. Ph. 475-1793. <b>MOTHER OF 2</b> would like to baby sit full time in her Chelsea Village home. Ph. 475-8259. <b>CARE AND PLAYMATE</b> needed for 2 1/2 year old 2 days per week. South or east of Chelsea. 475-3119. <b>SEEKING TO HIRE</b> a responsible person to come into our home to do light housekeeping and to babysit our newborn part time. Pleasant environment. Our home is 2 miles west of Chelsea. Ph. Judy at 475-2382. <b>BABYSITTER</b> needed. Starting Sept. 3. Monday thru Friday 2 p.m. to 4:30 p.m. for 2 1/2 year old. Call 475-2239 between 9 a.m. and 1 p.m. anytime after 4:30 p.m. <b>CHILD CARE</b> needed approximately 2 afternoons per week in Chelsea. Ph. 475-7313. <b>Wanted</b>	<b>Misc. Notices</b> <b>REWARD</b> - Scarecrow walkway. Small, sad garden on Grant St. missing protector. Return ensures that the scarecrow in scarecrows left hand will be multiplied by a full six. May the Zucchini be with you. <b>Elderly Housing</b> Supervised care, loving environment. Beautiful setting. Home cooked meals. State licensed. Robert House. 434-5179. <b>Bus. Services</b> <b>General</b> <b>Who ya' gonna call? GRASSBUSTERS LAWN CARE</b> <b>Ph. 475-2424</b> <b>WOLVERINE CHEM DRY</b> - Quality carpet and upholstery cleaning. Serving the Washtenaw county area. Call 428-7818 for your free estimates.	<b>DAVE'S SIDING &amp; ROOFING</b> Aluminum and vinyl siding. Custom trim and gutters. 1-517-851-7740. <b>REMODELING</b> DRYWALLING, PLASTERING, PLUMBING New or Repair Experienced. Free Estimates. <b>Phone 426-3515</b> <b>Landscaping Outdoor Maint.</b> <b>YOUR SUMMER PROJECT</b> Sawdusts & Boat Launch Ramps License No. 072110 Muskrat & Lake Weed Chemicals License No. 338092 WAVE BREAKER SYSTEMS at Portage Lake brochures 426-5500	<b>EXCAVATION and LANDSCAPE WORK</b> Reasonable rates CALL SUGARBUSH FARMS 475-9887 <b>Tutoring Instruction</b> <b>CERTIFIED MICHIGAN MUSIC TEACHER</b> <b>LaVONNE HARRIS, B.M.E., M.A.</b> Eastern Michigan University Certified Michigan Music Teacher <b>PIANO and ORGAN Lessons</b> PHONE 475-7134
<b>Dexter Area Manufacturing Firm</b> will train mature individual for the position of call center. Attention to detail and some electrical knowledge needed. Send work history to Personnel Dept. P.O. Box 981 Ann Arbor MI 48106.	<b>WANTED HANDY MAN</b> 10 hours per week. \$5 per hour in Mancheshire. Phone 428-7522	<b>CLERICAL</b> <b>NEED</b> • TYPISTS • WORD PROCESSING • DATA ENTRY • RECEPTIONIST • OFFICE CLERK Call <b>J. Martin Temporaries today</b> <b>994-1244</b>	<b>H.A.L.</b> is now hiring 20-25 people for immediate full-time positions. Excellent working conditions. Monthly guarantee of \$1,150 in advertising dept. Hiring through interview only. For appointment time call 994-8403.	<b>Waterloo Glass Co.</b> Mobile Glass Repair Auto Residential Commercial Licensed - Insured <b>475-7773</b> <b>We Offer Sales &amp; Service</b> RCA - Zenith - Philco - Quasar - Sony - B & W and Color TVs NuTone - Chandeliers - Wingard - Calra CB Radios Master Antenna Specialists Antenna Rotor Insurance Job Commercial Residential Paging Intercom Systems NuTone Parts and Service Center Hoover Vacuum Dealers and Service Specialists Keys by Curtis We service other leading brands Senior Citizens 10% Discount <b>LOY'S TV CENTER</b> 512 N. Maple Rd., Ann Arbor 769-0198 Master Charge, Visa Welcome <b>PIANO TUNING</b> and repair. Qualified technician. Call Ron Harris 475-7134. <b>CHELSEA HYDRAULICS</b> will repair all hydraulic systems, replace hydraulic hose and fittings, re-pack cylinders, repair valves and pumps. Available floor space to work on any size vehicle. <b>CHELSEA HYDRAULICS</b> 13206 Luck Dr., Chelsea 475-9529	<b>Bartender &amp; Waitress</b> Full or part time Apply at <b>SPORTSMAN'S</b> 8089 Main St. Dexter Ph. 426-2240	<b>Excavation and Landscaping Work</b> Reasonable rates CALL SUGARBUSH FARMS 475-9887 <b>Tutoring Instruction</b> <b>CERTIFIED MICHIGAN MUSIC TEACHER</b> <b>LaVONNE HARRIS, B.M.E., M.A.</b> Eastern Michigan University Certified Michigan Music Teacher <b>PIANO and ORGAN Lessons</b> PHONE 475-7134
<b>Housekeeper - Hotel</b> \$4.50 per hour plus bonus plan Previous experience a plus but not required. Apply immediately. <b>The Residence Inn</b> 800 Victoria Way Ann Arbor (behind the Wolverine Inn)	<b>KITCHEN HELP</b> Full or part time Good wages <b>475-9036</b> <b>PART TIME</b>	<b>McDonald's Zeeb Rd. Now Hiring</b> all shifts available Primarily days and late evenings. Flexible hours and scheduling. Premium pay. <b>MAINTENANCE POSITION</b> also open Stop and apply now 373 N. Zeeb Rd. Ann Arbor 48103 <b>994-6214.</b>	<b>DELI HELP CASHIERS and MAINTENANCE</b> Expanding Deli and convenience store has immediate openings for all positions. Full or part time flexible hours; complete training and competitive wages. Advancement opportunities for the right people. For further details apply in person. <b>"SPEEDY'S DELI"</b> Baker Rd. and I-94 Dexter EOE	<b>Wanted to Rent</b> <b>RESPONSIBLE FAMILY</b> needs to rent 3-bedroom home or cottage in Dexter-Chelsea area. Call 662-2917 after 6 p.m.	<b>SALESLERK</b> Mature lady for in-store sales <b>GAMBLES</b> Ph. 475-7472	<b>Attention Homemakers and Students</b> school will soon start and MANPOWER can offer you WORK NOW that will meet your scheduling needs for your classes or your children. <b>CALL 665-3757 or 665-5511</b>
<b>Experienced Phone Personnel</b> Call from home. No sales. <b>Ph. (616) 878-1905</b> or write 18 Byron Center, MI 49315.	<b>HOUSEKEEPER</b> MATURE INDIVIDUAL needed for full time position to include housekeeping, some driving and food service. This interesting job requires no child care, needs schedule flexibility and own transportation. Live-in is excellent compensation. Apply to <b>JUDITH</b> P.O. Box 8649 Ann Arbor, MI 48107-8649.	<b>DELIVERY DRIVER</b> Stop and apply now 373 N. Zeeb Rd. Ann Arbor 48103 <b>994-6214.</b>	<b>Wanted</b> <b>STANDING TIMBER</b> wanted. Sawlogs and veneer. Buskirk Lumber Co. Ph. (517) 661-7751. <b>NEED EXTRA CASH?</b> Cash paid for bicycles - 1, 3, 5 or 10 speeds. Bring them in now. Student Bike Shop, 607 S. Forest at S. University, Ann Arbor, 662-6986. <b>SOMEONE TO COMBINE</b> my 15 acres of lots, Zeeb and Joy Rd. Call Jim. 428-4994 and leave message. <b>SEEKING QUALIFIED PIANO TEACHER</b> for 2 children ages 8 and 10 in Chelsea area. 475-3614. <b>Wanted to Rent</b> <b>RESPONSIBLE FAMILY</b> needs to rent 3-bedroom home or cottage in Dexter-Chelsea area. Call 662-2917 after 6 p.m.	<b>Who ya' gonna call? GRASSBUSTERS LAWN CARE</b> <b>Ph. 475-2424</b> <b>WOLVERINE CHEM DRY</b> - Quality carpet and upholstery cleaning. Serving the Washtenaw county area. Call 428-7818 for your free estimates.	<b>SALESLERK</b> Mature lady for in-store sales <b>GAMBLES</b> Ph. 475-7472	<b>Attention Homemakers and Students</b> school will soon start and MANPOWER can offer you WORK NOW that will meet your scheduling needs for your classes or your children. <b>CALL 665-3757 or 665-5511</b>

## ROBERTS REALTY

"THE INSTANT ACTION REALTY"  
**475-8348**

**LAKE WATERFRONT** - Between the beautiful sunset and the fieldstone fireplace you can have it all. Year around living. Lots of parking. Room for expansion with this 2-bedroom maintenance-free home. Glass doorwall to patio. Breakfast nook. \$55,000. Terms.

**COUNTRY LIVING IN THE VILLAGE** 2 blocks north of downtown Chelsea. Rear deck overlooks your own private nature setting. Garden spot. Three bedrooms plus den. Will go quickly. Call today for an appointment. \$59,900.

**TREES, TREES, TREES!** Bi level with country setting, has four bedrooms, three baths, family room and two-car garage. State land adjoining and lake access. Only 14 years old and \$63,900. Excellent buy.

**BUILDING SITES** - Many available. 1 to 10 acres. Terms. If we don't have the one you want, we'll help you find one. Call and tell us what your needs are.

Ivey Road is sold, Cavanaugh Lake is sold, the duplex on Park Street is sold AND WE CAN SELL YOURS! Why don't you call...

**475-8348**

CUSTOMARY FEES NEGOTIABLE FOR SENIOR CITIZENS



**TOP PRICES PAID FOR ALUMINUM SCRAP**  
**ALL NON FERROUS METALS**  
**Jackson Fibers Co.**  
**(517) 784-9191**  
 1417 So. Elm St.  
 1 blk. North of High St.  
 Jackson, Michigan

**ADAM HARTMAN**  
**(313) 475-7869**

## WASHTENAW CARPET CLEAN

**STEAM CLEANING**  
 COMMERCIAL - RESIDENTIAL - MINOR REPAIRS  
 FREE ESTIMATES

**10% DISCOUNT during August with copy of this adv.**

**CARPET SALES & INSTALLATION**

**475-7869**

## SPECIALS

1 lb pkg Eckrich  
**SLICED \$1.45**  
**BOLOGNA**

3 LB CAN MAXWELL HOUSE  
**Coffee . . . . . \$8.47**

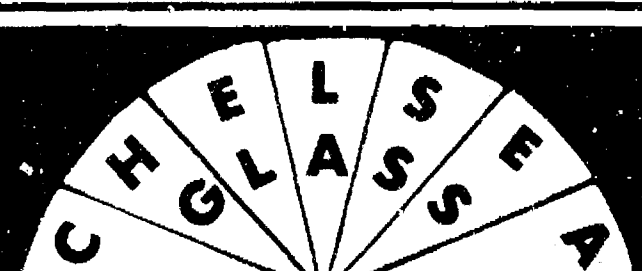
NO. 303 CAN DEL MONTE  
**Green Beans . . 2 for 79¢**

22 OZ GLASS PLUS  
**Glass Cleaner . . . 63¢**  
 With Sprayer

The Lotto Jackpot is \$1 Million for Wednesday.  
 Super Lotto Jackpot is \$4 Million for Saturday.

## KUSTERER'S

**FOOD MARKET**  
**DIAL 475-2721 WE DELIVER**



## Screens

including patio door screens

\* Rescreen your frame  
 1-day service

\* Fabricate new frames  
 for your lost screens

**140 W. Middle, Chelsea**  
**475-8667**

## Bus. Services 14

## CERTIFIED MICHIGAN MUSIC TEACHER

Betty Rasmussen, B.M.

Eastman School of Music  
Certified Michigan Music Teacher  
National Certified Music Teacher

SUZUKI and TRADITIONAL METHODS

PIANO LESSONS

PHONE 475-2722

Repairs, Improvements

## FOSTER'S

SMALL ENGINE REPAIR

B&S Tech. Kohler parts stocked  
Repair all makes lawn mowers, trim-  
mers, blowers, snowblowers, chains  
saws, generators. Reasonable rates.  
Ph. 475-2623

## COMPLETE SMALL ENGINE SERVICE

Lawn mowers, trimmers, blowers,  
tractors, chain saws, snowblowers,  
generators, and snow chains. New  
chains & mower blades sharpened.

Registered B &amp; S Tecumseh &amp; Kohler

Dealer, Village Lawn &amp; Garden

Center, 475-3313

## Window Screens

Repaired

Reasonable rates

## Chelsea Hardware

110 S. Main Ph. 475-1121

304

## D &amp; B's Painting

Interior &amp; Exterior

Commercial, Residential

also

ASPHALT DRIVEWAY SEALING

Phone (517) 851-7265

or (517) 851-7202

## Bus. Opportunity 16

OPEN YOUR OWN \$10.99 one price

designer shoe store. A retail price

unbelievable for quality shoes nor-  
mally priced from \$19 to \$60. Over

150 brand names, 250 styles, \$14.900

to \$25.900 inventory, training, fu-  
nishes, grand opening. Can combinewith over 1,000 brands of apparel,  
accessories, dancewear, dance ac-  
cessories, children's shop. Call Len

McSidney (424) 252-4449

or (424) 252-4449

Mr. Sidney (424) 252-4449

Mr. Sidney (424) 252-4449

Mr. Sidney (424) 252-4449

Mr. Sidney (424) 252-4449

Mr. Sidney (424) 252-4449

Mr. Sidney (424) 252-4449

Mr. Sidney (424) 252-4449

Mr. Sidney (424) 252-4449

Mr. Sidney (424) 252-4449

Mr. Sidney (424) 252-4449

Mr. Sidney (424) 252-4449

Mr. Sidney (424) 252-4449

Mr. Sidney (424) 252-4449

Mr. Sidney (424) 252-4449

Mr. Sidney (424) 252-4449

Mr. Sidney (424) 252-4449

Mr. Sidney (424) 252-4449

Mr. Sidney (424) 252-4449

Mr. Sidney (424) 252-4449

Mr. Sidney (424) 252-4449

Mr. Sidney (424) 252-4449

Mr. Sidney (424) 252-4449

Mr. Sidney (424) 252-4449

Mr. Sidney (424) 252-4449

Mr. Sidney (424) 252-4449

Mr. Sidney (424) 252-4449

Mr. Sidney (424) 252-4449

Mr. Sidney (424) 252-4449

Mr. Sidney (424) 252-4449

Mr. Sidney (424) 252-4449

Mr. Sidney (424) 252-4449

Mr. Sidney (424) 252-4449

Mr. Sidney (424) 252-4449

Mr. Sidney (424) 252-4449

Mr. Sidney (424) 252-4449

Mr. Sidney (424) 252-4449

Mr. Sidney (424) 252-4449

Mr. Sidney (424) 252-4449

Mr. Sidney (424) 252-4449

Mr. Sidney (424) 252-4449

Mr. Sidney (424) 252-4449

Mr. Sidney (424) 252-4449

Mr. Sidney (424) 252-4449

Mr. Sidney (424) 252-4449

Mr. Sidney (424) 252-4449

Mr. Sidney (424) 252-4449

Mr. Sidney (424) 252-4449

Mr. Sidney (424) 252-4449

Mr. Sidney (424) 252-4449

Mr. Sidney (424) 252-4449

Mr. Sidney (424) 252-4449

Mr. Sidney (424) 252-4449

Mr. Sidney (424) 252-4449

Mr. Sidney (424) 252-4449

Mr. Sidney (424) 252-4449

Mr. Sidney (424) 252-4449

Mr. Sidney (424) 252-4449

Mr. Sidney (424) 252-4449

Mr. Sidney (424) 252-4449

Mr. Sidney (424) 252-4449

Mr. Sidney (424) 252-4449

Mr. Sidney (424) 252-4449

Mr. Sidney (424) 252-4449

Mr. Sidney (424) 252-4449

Mr. Sidney (424) 252-4449

Mr. Sidney (424) 252-4449

## Card of Thanks 17

## THANK YOU!

I wish to express a sincere

thank you to Dr. O'Keefe and

staff, my family, the "gang" of

special friends in Chelsea, and

workers at U of M and the great

therapist at Chelsea Medical

Center for their kindness, help

and support in my recovery

and recovery. Sincerely,

Walter J. Kozlowski

Walter J. Kozlowski

Walter J. Kozlowski

Walter J. Kozlowski

Walter J. Kozlowski

Walter J. Kozlowski

Walter J. Kozlowski

Walter J. Kozlowski

Walter J. Kozlowski

Walter J. Kozlowski

Walter J. Kozlowski

Walter J. Kozlowski

Walter J. Kozlowski

Walter J. Kozlowski

Walter J. Kozlowski

Walter J. Kozlowski

Walter J. Kozlowski

Walter J. Kozlowski

Walter J. Kozlowski

Walter J. Kozlowski

Walter J. Kozlowski

Walter J. Kozlowski

Walter J. Kozlowski

Walter J. Kozlowski

Walter J. Kozlowski

Walter J. Kozlowski

Walter J. Kozlowski

Walter J. Kozlowski

Walter J. Kozlowski

Walter J. Kozlowski

Walter J. Kozlowski

Walter J. Kozlowski

Walter J. Kozlowski

Walter J. Kozlowski

Walter J. Kozlowski

Walter J. Kozlowski

Walter J. Kozlowski

Walter J. Kozlowski

Walter J. Kozlowski

Walter J. Kozlowski

Walter J. Kozlowski

Walter J. Kozlowski

Walter J. Kozlowski

Walter J. Kozlowski

Walter J. Kozlowski

Walter J. Kozlowski

Walter J. Kozlowski

Walter J. Kozlowski

Walter J. Kozlowski

Walter J. Kozlowski

Walter J. Kozlowski

Walter J. Kozlowski

Walter J. Kozlowski

Walter J. Kozlowski

Walter J. Kozlowski

Walter J. Kozlowski

Walter J. Kozlowski

Walter J. Kozlowski

Walter J. Kozlowski

Walter J. Kozlowski

Walter J. Kozlowski

Walter J. Kozlowski

Walter J. Kozlowski

Walter J. Kozlowski

Walter J. Kozlowski

Walter J. Kozlowski

Walter J. Kozlowski

Walter J. Kozlowski

Walter J. Kozlowski

Walter J. Kozlowski

Walter J. Kozlowski

Walter J. Kozlowski

Walter J. Kozlowski

Walter J. Kozlowski

Walter J. Kozlowski

Walter J. Kozlowski

Walter J. Kozlowski

Walter J. Kozlowski

Walter J. Kozlowski

Walter J. Kozlowski

Walter J. Kozlowski

Walter J. Kozlowski

Walter J. Kozlowski

Walter J. Kozlowski

Walter J. Kozlowski

Walter J. Kozlowski

Walter J. Kozlowski

Walter J. Kozlowski

Walter J. Kozlowski

Walter J. Kozlowski

Walter J. Kozlowski

Walter J. Kozlowski

Walter J. Kozlowski

Walter J. Kozlowski

Walter J. Kozlowski

Walter J. Kozlowski

## Legal Notice 19

## MORTGAGE SALE

Default has been made in the

conditions of a certain mortgage

made by MORTGAGEE, a single man

of Great Lakes Federal Savings and

Loan Association, a corporation organized

under the laws of the State of Michigan,

against MORTGAGOR, a single man

of the County of Wayne, State of Michigan,

dated October 10, 1978, and recorded

in October 10, 1978, in Liber 1679, Page 61

of the County of Wayne, State of Michigan,

and in the County of Wayne, State of Michigan,

dated October 10, 1978, in Liber 1679, Page 61

of the County of Wayne, State of Michigan,

and in the County of Wayne, State of Michigan,

dated October 10, 1978, in Liber 1679, Page 61

of the County of Wayne, State of Michigan,

and in the County of Wayne, State of Michigan,

dated October 10, 1978, in Liber 1679, Page 61

of the County of Wayne, State of Michigan,

and in the County of Wayne, State of Michigan,

dated October 10, 1978, in Liber 1679, Page 61

of the County of Wayne, State of Michigan,

and in the County of Wayne, State of Michigan,

dated October 10, 1978, in Liber 1679, Page 61

of the County of Wayne, State of Michigan,

and in the County of Wayne, State of Michigan,

dated October 10, 1978, in Liber 1679, Page 61

of the County of Wayne, State of Michigan,

and in the County of Wayne, State of Michigan,

dated October 10, 1978, in Liber 1679, Page 61

of the County of Wayne, State of Michigan,

and in the County of Wayne, State of Michigan,

dated October 10, 1978, in Liber 1679, Page 61

of the County of Wayne, State of Michigan,

and in the County of Wayne, State of Michigan,

dated October 10, 1978, in Liber 1679, Page 61

of the County of Wayne, State of Michigan,

and in the County of Wayne, State of Michigan,

dated October 10, 1978, in Liber 1679, Page 61

of the County of Wayne, State of Michigan,

and in the County of Wayne, State of Michigan,

dated October 10, 1978, in Liber 1679, Page 61

of the County of Wayne, State of Michigan,

and in the County of Wayne, State of Michigan,

dated October 10, 1978, in Liber 1679, Page 61

of the County of Wayne, State of Michigan,

and in the County of Wayne, State of Michigan,

dated October 10, 1978, in Liber 1679, Page 61

of the County of Wayne, State of Michigan,

and in the County of Wayne, State of Michigan,

dated October 10, 1978, in Liber 1679, Page 61

of the County of Wayne, State of Michigan,

and in the County of Wayne, State of Michigan,

dated October 10, 1978, in Liber 1679, Page 61

of the County of Wayne, State of Michigan,

and in the County of Wayne, State of Michigan,

dated October 10, 1978, in Liber 1679, Page 61

of the County of Wayne, State of Michigan,

and in the County of Wayne, State of Michigan,

dated October 10, 1978, in Liber 1679, Page 61

of the County of Wayne, State of Michigan,

and in the County of Wayne, State of Michigan,

dated October 10, 1978, in Liber 1679, Page 61

of the County of Wayne, State of Michigan,

and in the County of Wayne, State of Michigan,

dated October 10, 1978, in Liber 1679, Page 61

of the County of Wayne, State of Michigan,

and in the County of Wayne, State of Michigan,

dated October 10, 1978, in Liber 1679, Page 61

of the County of Wayne, State of Michigan,

and in the County of Wayne, State of Michigan,

dated October 10, 1978, in Liber 1679, Page 61

of the County of Wayne, State of Michigan,

and in the County of Wayne, State of Michigan,

dated October 10, 1978, in Liber 1679, Page 61

of the County of Wayne, State of Michigan,

and in the County of Wayne, State of Michigan,

dated October 10, 1978, in Liber 1679, Page 61

of the County of Wayne, State of Michigan,

and in the County of Wayne, State of Michigan,

dated October 10, 1978, in Liber 1679, Page 61

of the County of Wayne, State of Michigan,



# Church Services

## Assembly of God—

First Assembly of God  
The Rev. Phil Hawthorn, Pastor  
Every Sunday  
9:30 a.m. Sunday school  
10:00 a.m. Worship service and Sunday school  
6:00 p.m. Evening worship  
Every Wednesday  
7:00 p.m. Youth's Ambassadors Bible study and prayer

## Imperial—

Gregory Baptist  
The Rev. W. Thomas Cochran, Pastor  
Every Sunday  
9:30 a.m. Sunday school  
10:00 a.m. Morning worship  
6:00 p.m. Evening worship  
Every Wednesday  
7:00 p.m. Youth group

## Fellowship Baptist—

The Rev. Roy Macdonald, pastor  
883 788  
Every Sunday  
9:30 a.m. - Worship service at the church hall  
10:00 a.m. - Fellowship service at the church hall

## Methodist—

St. Mary  
The Rev. Fr. David Philip Dupuis, Pastor  
Every Sunday  
9:30 a.m. - Mass  
10:00 a.m. - Mass  
11:00 a.m. - Mass  
Every Wednesday  
7:00 p.m. - Mass  
7:00 p.m. - Mass

## Methodist—

Methodist  
The Rev. Fr. David Philip Dupuis, Pastor  
Every Sunday  
9:30 a.m. - Mass  
10:00 a.m. - Mass  
11:00 a.m. - Mass  
Every Wednesday  
7:00 p.m. - Mass  
7:00 p.m. - Mass

## Methodist—

Methodist  
The Rev. Fr. David Philip Dupuis, Pastor  
Every Sunday  
9:30 a.m. - Mass  
10:00 a.m. - Mass  
11:00 a.m. - Mass  
Every Wednesday  
7:00 p.m. - Mass  
7:00 p.m. - Mass

## Methodist—

Methodist  
The Rev. Fr. David Philip Dupuis, Pastor  
Every Sunday  
9:30 a.m. - Mass  
10:00 a.m. - Mass  
11:00 a.m. - Mass  
Every Wednesday  
7:00 p.m. - Mass  
7:00 p.m. - Mass

## Methodist—

Methodist  
The Rev. Fr. David Philip Dupuis, Pastor  
Every Sunday  
9:30 a.m. - Mass  
10:00 a.m. - Mass  
11:00 a.m. - Mass  
Every Wednesday  
7:00 p.m. - Mass  
7:00 p.m. - Mass

## Methodist—

Methodist  
The Rev. Fr. David Philip Dupuis, Pastor  
Every Sunday  
9:30 a.m. - Mass  
10:00 a.m. - Mass  
11:00 a.m. - Mass  
Every Wednesday  
7:00 p.m. - Mass  
7:00 p.m. - Mass

## Methodist—

Methodist  
The Rev. Fr. David Philip Dupuis, Pastor  
Every Sunday  
9:30 a.m. - Mass  
10:00 a.m. - Mass  
11:00 a.m. - Mass  
Every Wednesday  
7:00 p.m. - Mass  
7:00 p.m. - Mass

## Methodist—

Methodist  
The Rev. Fr. David Philip Dupuis, Pastor  
Every Sunday  
9:30 a.m. - Mass  
10:00 a.m. - Mass  
11:00 a.m. - Mass  
Every Wednesday  
7:00 p.m. - Mass  
7:00 p.m. - Mass

## Methodist—

Methodist  
The Rev. Fr. David Philip Dupuis, Pastor  
Every Sunday  
9:30 a.m. - Mass  
10:00 a.m. - Mass  
11:00 a.m. - Mass  
Every Wednesday  
7:00 p.m. - Mass  
7:00 p.m. - Mass

## Methodist—

Methodist  
The Rev. Fr. David Philip Dupuis, Pastor  
Every Sunday  
9:30 a.m. - Mass  
10:00 a.m. - Mass  
11:00 a.m. - Mass  
Every Wednesday  
7:00 p.m. - Mass  
7:00 p.m. - Mass

## Methodist—

Methodist  
The Rev. Fr. David Philip Dupuis, Pastor  
Every Sunday  
9:30 a.m. - Mass  
10:00 a.m. - Mass  
11:00 a.m. - Mass  
Every Wednesday  
7:00 p.m. - Mass  
7:00 p.m. - Mass

## Methodist—

Methodist  
The Rev. Fr. David Philip Dupuis, Pastor  
Every Sunday  
9:30 a.m. - Mass  
10:00 a.m. - Mass  
11:00 a.m. - Mass  
Every Wednesday  
7:00 p.m. - Mass  
7:00 p.m. - Mass

## Methodist—

Methodist  
The Rev. Fr. David Philip Dupuis, Pastor  
Every Sunday  
9:30 a.m. - Mass  
10:00 a.m. - Mass  
11:00 a.m. - Mass  
Every Wednesday  
7:00 p.m. - Mass  
7:00 p.m. - Mass

## Methodist—

Methodist  
The Rev. Fr. David Philip Dupuis, Pastor  
Every Sunday  
9:30 a.m. - Mass  
10:00 a.m. - Mass  
11:00 a.m. - Mass  
Every Wednesday  
7:00 p.m. - Mass  
7:00 p.m. - Mass

## Methodist—

Methodist  
The Rev. Fr. David Philip Dupuis, Pastor  
Every Sunday  
9:30 a.m. - Mass  
10:00 a.m. - Mass  
11:00 a.m. - Mass  
Every Wednesday  
7:00 p.m. - Mass  
7:00 p.m. - Mass

## Methodist—

Methodist  
The Rev. Fr. David Philip Dupuis, Pastor  
Every Sunday  
9:30 a.m. - Mass  
10:00 a.m. - Mass  
11:00 a.m. - Mass  
Every Wednesday  
7:00 p.m. - Mass  
7:00 p.m. - Mass

## Methodist—

Methodist  
The Rev. Fr. David Philip Dupuis, Pastor  
Every Sunday  
9:30 a.m. - Mass  
10:00 a.m. - Mass  
11:00 a.m. - Mass  
Every Wednesday  
7:00 p.m. - Mass  
7:00 p.m. - Mass

## Methodist—

Methodist  
The Rev. Fr. David Philip Dupuis, Pastor  
Every Sunday  
9:30 a.m. - Mass  
10:00 a.m. - Mass  
11:00 a.m. - Mass  
Every Wednesday  
7:00 p.m. - Mass  
7:00 p.m. - Mass

## Methodist—

Methodist  
The Rev. Fr. David Philip Dupuis, Pastor  
Every Sunday  
9:30 a.m. - Mass  
10:00 a.m. - Mass  
11:00 a.m. - Mass  
Every Wednesday  
7:00 p.m. - Mass  
7:00 p.m. - Mass

## Chelsea Christian Men's

Chelsea Christian Men's  
Prayer Breakfast  
Chelsea Hospital Cafeteria  
Second Saturday Each Month  
8:00 a.m. - Breakfast  
8:30-10:00 a.m. - Program

## Chelsea Full Ministry—

Chelsea Full Ministry  
1140 Jackson Rd. (Tara Top Hall)  
The Rev. Frank Jensen, Pastor  
Every Sunday  
10:00 a.m. - Sunday school  
11:00 a.m. - Morning worship  
6:00 p.m. - Evening worship  
Every Wednesday  
7:00 p.m. - Mid-week prayer and Bible study

## Chelsea Hospital Ministry—

Chelsea Hospital Ministry  
Every Sunday  
10:00 a.m. - Morning service, Chelsea Community Hospital Cafeteria

## Covenant—

Covenant  
30 N. First St.  
The Rev. Ron Smerage, Pastor  
Sunday, Aug. 31  
9:30 a.m. - Family worship, includes children's church. Nursery provided

## Immanuel Bible—

Immanuel Bible  
140 E. Second St.  
Rev. Carl, Pastor  
Every Sunday  
9:30 a.m. - Sunday school, nursery provided  
11:00 a.m. - Morning worship, nursery provided  
6:00 p.m. - Evening worship  
Every Wednesday  
7:00 p.m. - Family hour, prayer, roasting and Bible study

## St. Hope's Bible—

St. Hope's Bible  
1200 First St., Grand Lake  
The Rev. Ken Blackburn, Pastor  
Every Sunday  
10:00 a.m. - Sunday school  
11:00 a.m. - Morning worship  
6:00 p.m. - Evening worship  
Every Wednesday  
7:00 p.m. - Bible study

## North Sharon Bible—

North Sharon Bible  
Sharon and Washburne Hds.  
The Rev. Timothy E. Booth, Pastor  
Every Sunday  
10:00 a.m. - Sunday school  
11:00 a.m. - Morning worship  
6:00 p.m. - Evening worship  
Every Wednesday  
7:00 p.m. - Bible study and prayer meeting, nursery available. Bus transportation available. 475-7222

## Presbyterian—

Presbyterian  
First United Presbyterian  
Undulla  
John Marvin, Pastor  
Every Sunday  
11:00 a.m. - Worship service

## United Church of Christ—

United Church of Christ  
Bethel Evangelical and Reformed  
Princeton Township  
The Rev. Herman A. Rasmus, Pastor  
Every Sunday  
10:00 a.m. - Worship service

## Congregational—

Congregational  
121 East Middle Street  
The Rev. John Gibson, Pastor  
Sunday, Aug. 31  
9:30 a.m. - Nursery for pre-schoolers  
9:30 a.m. - Ecumenical summer Sunday school  
10:00 a.m. - Worship service  
10:30 a.m. - Coffee and fellowship gathering  
Sunday, Sept. 2  
10:00 a.m. - Administration council at East

## St. John's—

St. John's  
Kagay's Corners, Waters and Fletcher Hds.  
The Rev. Theodore Winkler, Pastor  
Every Sunday  
10:00 a.m. - Worship service, Sunday school

## Methodist Home Chapel—

Methodist Home Chapel  
Every Sunday  
8:45 a.m. - Worship service

## North Lake—

North Lake  
United Methodist Church  
1411 North Terminal Road  
The Rev. Sandra Wilkerson, Pastor  
Every Sunday  
10:00 a.m. - Worship service  
11:00 a.m. - Fellowship hour, Sunday school

## Sharon United Methodist—

Sharon United Methodist  
Corner Pleasant Lake Rd. and M-50  
The Rev. Evans Bentley, Pastor  
Every Sunday  
10:00 a.m. - Sunday school  
11:00 a.m. - Worship service

## St. John's Evangelical and Reformed—

St. John's Evangelical and Reformed  
Every Sunday  
10:00 a.m. - Sunday school and worship service  
First Monday of every month  
Communion

## St. Paul—

St. Paul  
The Rev. Edwin R. Koch, Pastor  
Sunday, Aug. 31  
10:00 a.m. - Church school classes  
10:00 a.m. - Morning worship service  
2:00 p.m. - Senior high youth picnic, campout at Tim Whelan's cottage  
Sunday, Sept. 2  
7:00 p.m. - Teachers orientation meeting

## Lutheran—

Lutheran  
Faith Evangelical Lutheran  
The Rev. Mark Parshley, Pastor  
Sunday, Aug. 31  
9:00 a.m. - Worship, Sermon on Jonah  
1:00-4:15 - The Good Samaritan

## Our Savior Lutheran—

Our Savior Lutheran  
1515 S. Main, Chelsea  
The Rev. Franklin H. Giesel, Pastor  
Sunday, Aug. 31  
9:00 a.m. - Worship service with Holy Communion

## St. Jacob Evangelical Lutheran—

St. Jacob Evangelical Lutheran  
1201 Rusticville Rd., Grand Lake  
The Rev. Andrew Bloom, Pastor  
Every Sunday  
9:00 a.m. - Sunday school  
10:00 a.m. - Divine services

## St. Thomas Lutheran—

St. Thomas Lutheran  
Ellsworth and Haak Hds.  
The Rev. John Kuke, Pastor  
Sunday, Aug. 31  
10:00 a.m. - Worship

## Trinity Lutheran—

Trinity Lutheran  
3728 Main, three miles east of Gregory  
William J. Trosen, Pastor  
Every Sunday  
9:00 a.m. - Worship service  
9:30 a.m. - Sunday and Bible school  
10:45 a.m. - Worship service

## Zion Lutheran—

Zion Lutheran  
Corner of Fletcher and Waters Rd.  
The Rev. John R. Morris, Pastor  
Sunday, Aug. 31 - 13th Sunday after Pentecost  
9:00 a.m. - Sunday school  
10:15 a.m. - Worship

## Methodist—

Methodist  
Chelsea Free Methodist  
7655 Westport Rd.  
Merri Bradley, Pastor  
Wednesday, Aug. 27  
7:00 p.m. - Society meeting  
Sunday, Aug. 31  
9:00 a.m. - Sunday school  
10:00 a.m. - Morning worship  
7:00 p.m. - Evening worship

## Salem Grove United Methodist—

Salem Grove United Methodist  
1222 Notten Rd.  
Donald Wootton, Pastor  
Every Sunday  
9:30 a.m. - Church school  
10:00 a.m. - Morning worship

## First United Methodist—

First United Methodist  
Parks and Territorial Hds.  
The Rev. Larry Nichols and  
The Rev. David Goldsmith, Pastors  
Every Sunday  
10:00 a.m. - Sunday school  
11:15 a.m. - Worship service

## Waterloo Village United Methodist—

Waterloo Village United Methodist  
8118 Washington St.  
The Rev. David Goldsmith, Pastor  
Every Sunday  
10:00 a.m. - Sunday school  
11:15 a.m. - Worship service

## First United Methodist—

First United Methodist  
120 First St.  
The Rev. Dr. Jerry Parker, Pastor  
Sunday, Aug. 31  
8:30 a.m. - Adult Fellowship class  
9:30 a.m. - Church members' open  
10:00 a.m. - Worship service  
10:30 a.m. - Summer social time  
10:30 a.m. - Ohio Nursery classes

## Methodist Home Chapel—

Methodist Home Chapel  
Every Sunday  
8:45 a.m. - Worship service

## North Lake—

North Lake  
United Methodist Church  
1411 North Terminal Road  
The Rev. Sandra Wilkerson, Pastor  
Every Sunday  
10:00 a.m. - Worship service  
11:00 a.m. - Fellowship hour, Sunday school

## Sharon United Methodist—

Sharon United Methodist  
Corner Pleasant Lake Rd. and M-50  
The Rev. Evans Bentley, Pastor  
Every Sunday  
10:00 a.m. - Sunday school  
11:00 a.m. - Worship service



"DR. MARK CHADWICK" of Ypsilanti is one of the performers in the Silly Club currently featured week-ends at the Michigan Renaissance Festival in Holly.

## Washtenaw Native Juggler Splits His Time Between Shows in Florida, Holly

By Russ Ogden

Free Lance Drama Critic and Professor at EMU  
Washtenaw county native Mark Chadwick is trying to outdo the "Flying Nun" with his current ventures in show business. During the week Monday through Friday Chadwick appears in three different shows at Bush Gardens in Tampa, Fla. The Juggleheads, The German Dance Show, and the International Dance Show Company.

His current escapade is to fly to Detroit late Fridays and appear at the Michigan Renaissance Festival in Holly on Saturday and Sundays, flying back to Tampa for his performances on Monday.

The Silly Club Show, a proven popular show of juggling and nonsense emphasis on non-sensory stars former Ypsilanti native "Dr." Mark Chadwick, 24, and his Kansas City fellow performer, Danno Sullivan, 22, will again be featured at the Michigan Renaissance Festival for their fifth consecutive year. Their performances are week-ends starting with the current week-end

and running through Sept. 28.

In 30 minutes of showtimes, the two performers cover a multitude of entertainment. From juggling six wispy scarves, "We call it California juggling," says Chadwick, "because it's so mell-oow," to spinning blazing torches around an audience "volunteer," usually an attractive young lady.

Their Amazing Little Guy Stunt, wherein the two lads costume themselves in such a way that they appear to have become a single tiny human, is always a hit with both the young and old audience members.

Chadwick and Sullivan both "love this fair and hope to always return to it, even when we're rich and famous."

Rich and famous? "Well, says Chadwick, "it's bound to happen. Every year we get better; we perform in different styles, in different places. Right now we're richer than famous, but fame is lurking around an unsuspecting corner." And Chadwick's famous mischievous smile comes to the forefront with this statement.

The Silly Club has performed at entertainment festivals around the country including AutoWorld, Bush Gardens, Epcot Center, and as a crewmember on the Michael Jackson Victory Tour. They have also appeared at Wayne State and Eastern Michigan Universities as well as public schools in Southeastern Michigan.

The Silly Club is an organization that has provided live shows and published a humor newsletter since 1982, when Sullivan and his brother began it as a joke. Now Sullivan and Chadwick have one of the most sought after unique shows on the festival circuit, while Sullivan's brother pretty much takes care of the S/C Newsletter.

Both Chadwick and Sullivan maintain home base currently in Flint. Chadwick graduated from Ypsilanti High school and was captain of the Eastern Michigan University gymnastics team during his four-year tenure there. Chadwick plans to continue with further training in dramatics and music by attending Illinois State University in Bloomington starting in the fall of 1987.

Subscribe today to The Standard

**ZOA'S LOG CABIN LUNCH**  
6714 Clear Lake Rd. WATERLOO  
Mon.-Thurs. 11 a.m.-8 p.m.  
Fri. 11 a.m.-9 p.m.  
Sat. 9 a.m.-9 p.m.  
Sun. 9 a.m.-3 p.m.

**VCR MOVIE RENTALS**  
**CARRY-OUT**  
or  
**SERVED-IN PIZZA**  
12" MED. 16" LARGE  
CHEESE ..... \$5.25 \$ 7.00  
+ 1 ITEM ..... \$5.75 \$ 7.75  
+ 2 ITEMS ..... \$6.25 \$ 8.50  
+ 3 ITEMS ..... \$6.75 \$ 9.25  
+ 4 ITEMS ..... \$7.25 \$10.00  
+ SUPER ..... \$8.00 \$11.00  
Phone 475-7169

## School Board Notes

Present at a regular meeting of the Chelsea Board of Education Monday, Aug. 18 were Dils, Grau, Comeau, Satterthwaite, Wales, Cherem, superintendent Van Meer, principals Williams, Stielstra, Benedict, Wescott, assistant principal Larson, community education director Rogers, athletic director Reed, curriculum director Bissell, guests.

Meeting called to order at 8:07 p.m. by President Dils.  
Board approved the minutes of the Aug. 4 meeting.

Entered as official communications were: (1) a letter from a district resident in which she complimented the Chelsea School District's kindergarten curriculum and indicated that her child had a very successful 1985-86 school year; (2) a letter from Chelsea Community Hospital indicating that the hospital administration had approved the joint hiring of a substance abuse counselor, the duties of whom would be divided between the hospital and the Chelsea School District. Curriculum director Bissell and assistant principal Larson will assist Ruth Schantz in the selection of the counselor for this program.

President Dils presented certificates of appreciation to Athletic Boosters Bob and Ginny Wheaton and Ellie Unterbrink. Larry Reed commented how valuable the services of these boosters have been in general and, specifically, during his first year as athletic director. Larry stressed the importance of their great support to the athletic program.

Superintendent Van Meer indicated that newly hired teachers were present at the meeting; they were presented to the Board of Education by the respective building principals. Darryl Stielstra presented Tam Gillingham, Bob Benedict presented Laura Holdsworth, Gail Wierman and Sharon Hodgson.

The board directed the superintendent and the athletic director to consult on the athletic program needs and, at a future date,

report to the board about various positions and programs.

The board approved the following lunch prices for 1986-87: \$1.25 for students, \$1.50 for adults, \$1.50 for milk, and \$1.50 (same as 1985-86) for reduced price meals.

The board authorized the following tax levy for 1986:

Operating:	
Allocated	11.22 mills
Extra voted	27.30 mills
Debt Retirement:	
1985 DRF	0.78
1974 DRF	1.95
	2.70 mills
	41.22 mills

The board authorized the closing of several high school internal accounts which have been inactive for four years.

The board approved the change of date for the first board meeting in September. Because of Labor Day, the first meeting will be held Tuesday, Sept. 2.

The board adopted a resolution for adult education funding under Section 107 of the 1986-87 School Aid Amendment (P.A. 94 of 1979, as amended by Senate Bill 703).

The board approved a full-time teaching contract for Gail Wierman. Gail was hired at the Aug. 4 meeting to teach half-time kindergarten. The full-time position was necessitated when the number of kindergarten sections was increased from 7 to 8 because of increasing enrollment.

Meeting adjourned at 9:55 p.m.

## Standard Want Ads Get Quick Results!

### MICHAEL W. BUSH

C.P.A., P.C.

CERTIFIED PUBLIC ACCOUNTANT

8864 Main St., Dexter

Ph. 424-4556

Accounting, Tax & Consulting Services

Personal, Business, Farm, Corporate

Monthly Rates \$400.00

Freeing & Reliability guaranteed

## WERE OPEN 24 HOURS 7 DAYS A WEEK

### For Your Inspection

Our BIG LOT is ALWAYS OPEN for you to browse (even after normal business hours). No salesmen, no fences, no chains -- no blocked off driveways. Look them over at your convenience, then come back during normal business hours to make YOUR BEST DEAL.

Only minutes away. Located a mile north off I-94, Exit 159. Always a great selection. Warranties included with or available on most vehicles.

Always over 40 to choose from.

### ... OVERSTOCKED ...

1977 FORD LTD Wagon	\$1,995
1979 VW RABBIT - front wheel drive	\$1,450
1977 THUNDERBIRD	\$1,695
1978 THUNDERBIRD	\$1,995
1978 MUSTANG	\$1,995
1978 FORD LTD II, excellent transportation	\$1,995
1980 GRANADA 2-dr	\$2,495
1979 FORD LTD LANDAU	\$2,495
1981 GRANADA 2-dr.	\$2,495
1980 MERCURY Zephyr 4 dr.	\$2,795
1978 FAIRMONT WAGON, 45,000 miles	\$2,995
1982 ESCORT 4-dr. automatic transmission	\$3,495
1984 ESCORT	\$3,650
1984 FORD Escort 2-dr., locally owned	\$3,995
1981 OLDS OMEGA 4 dr. Sport Model	\$3,995
1983 BUICK SKYLARK, 2-dr. Just reduced	\$4,295
1983 AMC EAGLE	\$4,995
1985 FORD EXP Sporty Coupe	\$4,995
1983 FORD THUNDERBIRD	\$5,495
1983 PONTIAC 6000 STE 4-dr.	\$5,995
1983 FORD F-150 PICKUP	\$5,995
1983 CAMARO BERLINETTA	\$6,995
1984 FORD Converted Van	\$6,995
1984 CUTLASS CIERA	\$7,995
1983 MERCURY Grand Marquis 4-dr.	\$8,495
1985 BRONCO B EDDIE BAUER	\$10,900
1984 BEAUVILLE WAGON	\$11,900
1984 LINCOLN CONTINENTAL 30,000 miles	\$13,500

## Letters to the Editor

To the Editor,

**Wanted—Wanted—Needed:** Any info on the most unpatriotic, disrespectful, non-loyal thief and trespasser, that has been plaguing our Chelsea area since July 4th? Any information will be gratefully appreciated. A wave of American Flag thieves seems to hit this area and elsewhere every three or four years.

It was about four years ago that our Chelsea cemetery was invaded and 13 American veterans' markers were stripped of their American flag. How low can one stoop when stealing from the dead?

It isn't the cost that counts, as much as the pain for the veterans and survivors. It isn't the cost of a new flag that bothers. It's the loss of a loved one, along with millions of other families who have or had veterans in service that didn't come back. It isn't the cost of a flag—but the cost the veterans are paying with their mangled bodies and minds, in our VA hospitals all over the U. S. A., that paid the price to help you walk freely on the street.

This siege of thievery is punishable by law—federal and state. A \$50 fine, time spent in jail, or other charges can be imposed on any person showing such stupid disrespect to the flag of America and other people's property.

If any of our residents see someone having more flags than usual, trying to sell them or using them for covers, wallhangings, window coverings or mats, please report this to the police.

A few years ago two American flags that covered two veterans' caskets, were given to the VFW Post 4026 and then given to Veterans Park here. Each in turn, was stolen less than a week after they were posted. Three weeks ago, the auxiliary and post from Post No. 4076 presented a 4x6 Perma-Nyl-all weather American flag to this Village, Veterans Park Ball Park. It too, has been stolen since then.

Our Chelsea Fair Parade will have many flags in it. If you don't feel like saluting each group as it goes passing by, at least stand, and salute the lead flags, and then stand at attention—arm's at sides, when the rest go marching by. It's your country—let's keep it free. In our 40 years of membership we have presented over 300 American flags in this area.

Eulalie Packard,  
Americanism Chairman,  
VFW Auxiliary No. 4076.

Dear Editor,

Last fall I helped my uncle, Hermus Mallard, now deceased, write a letter to Casey's Top 40 with the hope that Casey would read it as a long-distance dedication to the people of Chelsea, Michigan. Almost a year has passed since we posted the letter, so it is probably safe to assume that it did not make Casey's cut. (He gets over a million letters a year! I heard him say so on "Eye on Hollywood.") But I thought I would share Uncle Hermus' letter with your readers, anyway:

"Dear Casey,  
"I live in Ann Arbor, a big city in Michigan, with my niece and her family. I am partially deaf so I have to turn your show way up to hear anything. This is all right except when you play that rock and roll music.

"Not far from here is a tiny village called Chelsea where there are nice people. When I was feeling better I would drive to Chelsea and shop in the bakery and hardware store. The people were so friendly and the prices reasonable. I saw one wino but even he was smiling.

"It is always a pleasant day in

Chelsea, even when it rains or there is a blizzard. Now I am under heavy medication and sometimes in an iron lung. I have not made a trip to Chelsea in three years. The last time I collapsed.

"But I will never forget the kindness of the Chelsea people. Many spoke loudly so I could understand them and helped me count my money. Casey, could you please play "Up, Up With People, You Meet Them Wherever You Go?"

Hermus Mallard.

Maybe some of the Chelsea shopkeepers remember Uncle Hermus. He loved peach cobbler and wore a green corduroy hat with ear flaps.

Helel Mallard Ford.

To the Editor,

An Open Letter to the Waterloo Duck Killer.

On Thursday, Aug. 21, at approximately 5 a.m., you plowed through our group of eight ducks who were innocently sleeping in a huddled group. The count stands at three dead and one injured.

After this thoughtless and cruel act, you left the splattered, bloody remains all over the road for the neighborhood children to find when they woke just a few hours later.

While I am the first to admit that the ducks are sometimes a nuisance, they did not deserve such a violent attack. They were raised from eggs to live in and around the Waterloo pond and protected from predators until they could defend themselves, but what chance did they stand against your motorized vehicle?

I'm sure that you have an excuse for what you've done, but I feel that it was inexcusable. If you were in such a hurry that you could not wait for them to move, you could have simply gone around the ducks, which is what most of us choose to do. Or there was a driveway right there for you to turn around in, and there were two alternate routes that you could have taken that would not have caused more than a 45-second delay.

If my dog had killed those ducks, they would be hanging around his neck, show your face. I'm sure we can come up with a suitable punishment for your crime—a tooth for a tooth, or, perhaps you should stop by sometime and explain your actions to all the children who were exposed to your violence by the sight that greeted them when they awoke.

Waterloo Duck Lover.

P. S.—Do be sure you and your family are not in my way when I am driving by in a hurry. By the way, you were seen and we are watching for you. Most people who drive in the dark use headlights—you should try that too!

Dear Editor,

Even in a quiet town like Chelsea law-abiding citizens must contend with the loud music and behavior of teenagers. This is one area where I agree with Lyndon Larouche. He says we should colonize Mars so law-abiding citizens can escape from the wicked. I would add to that, creationism should be taught in the schools there.

Muffin Blare.

### Need Early Copy For Next Week

The Editor of The Chelsea Standard is requesting early copy and advertising for the next issue of Sept. 3 as Monday is Labor Day holiday.



SUZANNE OGDEN of Ypsikanti will be opening with the female lead role in "Butterflies Are Free" at True Grist Dinner Theatre in Homer Thursday, Aug. 28. The production will continue on Wednesday through Sunday until Sept. 21.

## Ypsikanti Actress Opening At True Grist Theatre

"Butterflies Are Free" lights up the Fall Season at the True Grist Dinner Theatre in the Historic Homer Mill. Butterflies, celebrating its 17th birthday on Oct. 21 (1969), drew rave reviews from The New York Post, Times and Daily News when it opened. New Producer David Friedman of the True Grist has announced that Butterflies will run from Aug. 28 through Sept. 21.

A warm, touching comedy, the bachelor in his first apartment with a pretty actress next door, complicated by an interfering and overprotective mother. Butterflies Are Free by Leonard Gershe, promises chuckles and belly laughs in this production.

Featured in the True Grist comedy production are James Allen Baker, the bachelor Don and Suzanne Ogden, the actress Jill Baker is from Westland and has performed all over Michigan and the Mid-West most recently at the Grist in "Damn Yankees."

Suzanne Ogden, from Ypsikanti, has delighted Coldwater audiences at Tibbits Opera House during the past several seasons. She is fondly remembered as Baby June in "Gypsy" at the Tibbits Theatre. She then appeared as Isabel in "Pirates of Penzance."

Local dramatic and musical directors Diane and Bill Boggs caused the musical flower to bloom with the casting of her in "West Side Story" as Anita.

Suzanne's high school career then saw her playing Frumhark Saraf in "Fiddler on the Roof."

Critical community theatre successes at Saline were hers when she portrayed Hodel in "Fiddler on the Roof" as Carrie Pepperidge in "Carousel." Additional plaudits were received by her as the "Star-To-Be" in "Annie" at the Grosvenor Opera House.

"Butterflies Are Free" is the first production at True Grist mounted by the new owners/operators team of What & Friedman. They have been very selective in the casting of this production, which is sure to bring audiences one of the finest professional performances seen at True Grist to date, commented public relations director Pam Fox.

True Grist Dinner Theatre in the historic Homer Grist Mill is a non-profit professional theatre with performances Wednesday through Sunday year round. The century old Grist mill is listed on the State and National Registers of Historic Places and houses both the theatre and the Ban Room Restaurant with banquet



DINNERS BY THE HUNDREDS were served at the eighth annual Pig Roast of the Chelsea Rod and Gun Club. Behind the serving counter were

two members of the club's Women's Auxiliary, Joyce Freysinger, left, and Barbara Fredette.

## SCHOOL LUNCH MENU

Weeks of Sept. 1-12

Tuesday, Sept. 2 Chelsea no school. Manchester menu: Hamburger on bun, later tots, dill pickles, fruit cocktail, milk.

Wednesday, Sept. 3 Home-made Italian spaghetti, warm French bread, butter, pineapple tidbits, milk.

Thursday, Sept. 4 Lemonade, submarine sandwich, potato chips, carrots and celery sticks, peach half, milk.

Friday, Sept. 5 Cheese and sausage pizza, tossed salad with dressing, fresh fruits, chocolate chip cookies, milk.

Monday, Sept. 8 Hot dog on bun, macaroni salad, dill pickles, ice juice, milk.

Tuesday, Sept. 9 Beef ravioli, buttered green beans, bread and butter, molded fruit salad, milk.

Wednesday, Sept. 10 Ham and cheese in a pita pocket, vegetable sticks, applesauce, milk.

Thursday, Sept. 11 Crispy fish fillet, oven brown potatoes, mixed vegetables, dinner roll and butter, pear half, milk.

Friday, Sept. 12 Fruit punch, tacos with sauce, lettuce and tomato and cheese, buttered corn, fresh fruit, milk.



Leonardo da Vinci invented the scissors.

CATCHER STEVE GRAU TRIED to deny Gary Johnson a home run during the Dodgers versus parents game at Dunn Field on Friday, Aug. 22, but Johnson made his way to the plate—just in time to score! Parents lost to the boys, 8-6, but everyone had a good time.

## GOING OUT OF BUSINESS SALE

### BERTIE'S BARGAINS

Corner of M-52 & Old US-12, Chelsea

### —Special Lamp Sale—

We are winding down with our last 5 days. Closing on the 31st, 10 a.m. to 6 p.m. daily.

Display racks and everything goes!

# SAVE \$1.00



## SAVE \$1.00

Save \$1.00 on the purchase of two 1/2-liter 8-packs or two 6-packs of cans or one 12-pack of cans or three 2-liter bottles. Offer good on these brands:



COUPON VALID THROUGH 9/30/86

47000 267044

## It pays to learn income taxes from H&R Block.

### America's Finest Income Tax Course

Learning income taxes now could offer you money-making opportunities and save you money on your return at tax time.

- Evening Classes
- Reasonable course fee • Classes begin Sept. 11
- Held at Chelsea High School

Send for more information today or call now!

### H & R BLOCK

105 S. Main St., Chelsea

P.O. Box 105

Phone 475-2752

Contact our nearest office



Please send me free information about your tax preparation course.

Name \_\_\_\_\_

Address \_\_\_\_\_

City \_\_\_\_\_ State \_\_\_\_\_ Zip \_\_\_\_\_

Phone \_\_\_\_\_



## DEATHS

### Hugh A. Bradbury

59 Wythe Rd.  
Dexter Township  
Hugh A. Bradbury, 84, of Dexter township, age 84, died suddenly at his home, Friday, Aug. 22.

He was born Feb. 23, 1902, in Atlantic, Ia., the son of Archie and Nettie Ayres Bradbury.

Mr. Bradbury had been a resident of the Dexter area since 1919, and was a member of the Dexter United Methodist church, Washtenaw County Farm Bureau and Washtenaw Lodge No. 65 F & M.

On Feb. 28, 1924, he married Esther L. Beach in Dexter; she preceded him in death on July 18, 1968.

Survivors include a daughter, Mrs. Leroy (Barbara) Wing of Ann Arbor; a brother, Jay L. Bradbury of Dexter; two sisters, Mrs. LaVerne (Merl) Coy and Mrs. Mary Haebwerdt, both of Dexter; four grandchildren, several nieces and nephews.

He was preceded in death by his sister, Mildred Lewis, and brother, J. Clifford Bradbury.

Funeral services were held Tuesday, Aug. 26, at 1 p.m. at the Dexter United Methodist church, with the Rev. John E. Harnish officiating.

Burial followed in Forest Lawn cemetery, Dexter.

Masonic services were held Sunday evening, Aug. 25, at 7:30 p.m. at the Home Funeral Home.

Memorials may be made to the Dexter United Methodist church. Arrangements were by the Home Funeral Home.

**Maurine Snay**  
Chelsea

Maurine Ann "Boots" Snay, 44, of Chelsea, died Monday, Aug. 25 at Cedar Knoll Rest home after a long illness.

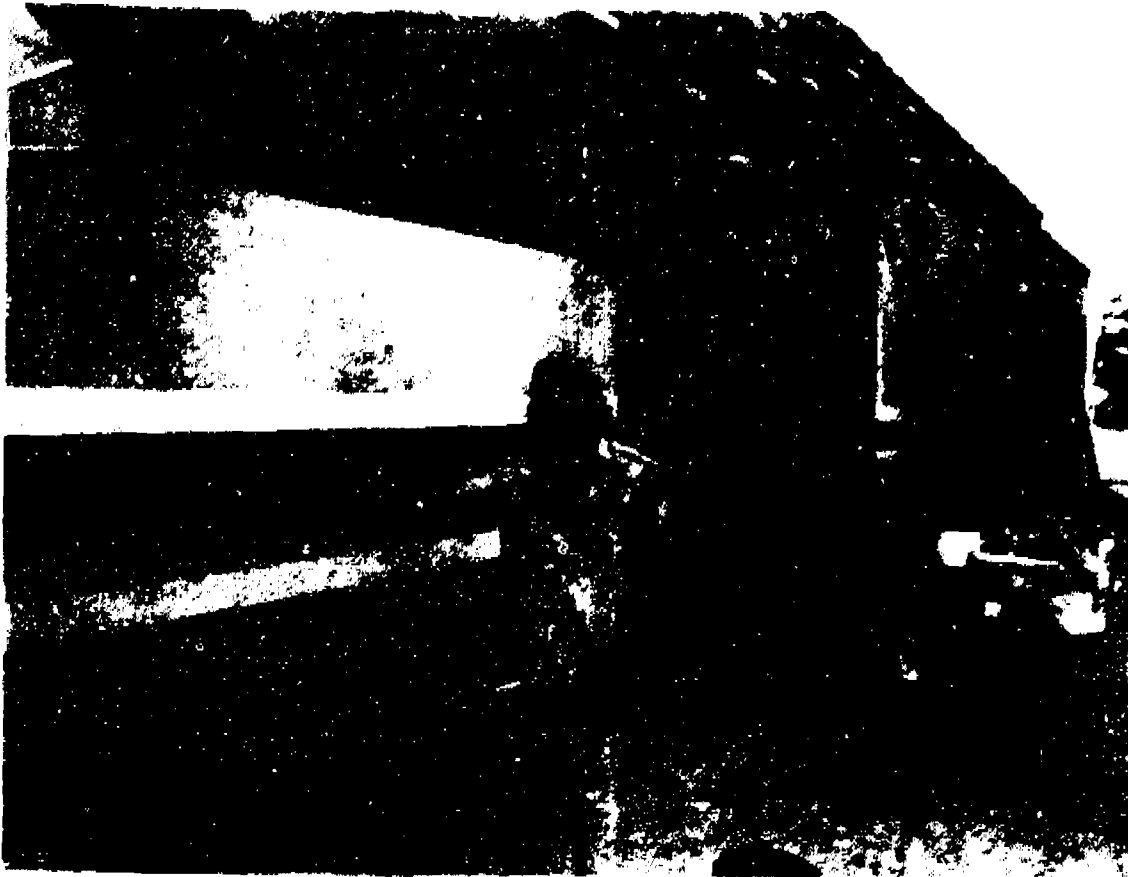
She was born July 13, 1942, in Charlevoix, the daughter of Fred Snay and Gladys (Sperry) Snay.

Surviving are three sons, Jeffrey Lovely, of Ann Arbor, Rodney Lovely, of Chelsea, and Arthur Snay, of Indiana; her father, of Charlevoix, and mother, of Ypsilanti; one sister, Sharon Watts, of Lima township; and one granddaughter, Amber Lovely. She was preceded in death by a brother, Fred Snay, in April, and a sister, Sandra, in 1975.

Mrs. Snay had been a resident of Chelsea for three and a half years, coming from Boyne City.

Funeral services will be held Wednesday, Aug. 27 at 11 a.m. at Staffan-Mitchell Funeral Home, with the Rev. Fr. Philip Dupuis of St. Mary's Catholic church officiating. Burial will be in Oak Grove Cemetery, Chelsea.

Arrangements were handled by Staffan-Mitchell Funeral Home.



**DRIVING MONTHS ON 16-62**, it looks as though Wolverine Food and Spirits Owner Joe Merkel completed some extensive renovation. However, the "architectural illusion" is the work of Madison, Wis. artist Randy Smith. He turned the

previously unimpressive building into what looks like a cafe with character. It took Smith and helper Eric Vinger nearly three weeks to complete their work, and they hope to work on the back and west side of the building next year.

Please Notify Us  
In Advance of  
Any Change in Address



**WOLVERINE FOOD AND SPIRITS**, formerly a drab, brown brick building, has a new look to it thanks to artist Randy Smith of Madison, Wis., and his helper Eric Vinger. Specializing in what he calls "architectural illusion," Smith has turned the restaurant into what looks like a cafe from a distance. The two men hand-painted thousands of bricks on two sides of the building to match real bricks already in place. They also painted awnings, a door, and an Indian, above. Smith said, like Alfred Hitchcock, he puts himself into every piece of art he produces. "The Indian is what I would look like if I were an Indian," he says. The two almost look like blood brothers, don't they?



**KATHY GIBSON GETS A HIT** at Doss Field during the Aug. 22 game in which Chelsea Little League Champions Dodgers challenged their parents and emerged the victors, 4-6. Coach Earl Grau explained the parents had been great support for the boys this season. "Besides that, we all had a lot of fun," he said.



**IT WAS A BUSY DAY** for attendants of the refreshment booth at last Saturday's Youth Appreciation Day held at Chelsea Lanes. More than 450 children ages 7-18 from Chelsea and the surrounding area turned out. Working in the back row

are Carl Heide, Fremont Boyer and Mac Packard. Enjoying themselves in the front row are Brandon Miller and Stacy Miller, children of Phil and Karen Miller of Stater Ct., and Stacey Eresen, son of Stephen and Vickie Eresen of Waterline.

### JERRY HANSEN & SONS ROOFING & SIDING COMPANY

Phone (313) 994-4232  
P. O. Box 2123, Ann Arbor, Mich. 48106

ALL TYPES OF ROOF REPAIRS, SIDING, GUTTERS  
SHOWN WITH INSURANCE WORK

27 Years Experience

### LUNCHEON SPECIAL FOR THE MONTH OF AUGUST CROCK OF SOUP OR CHILI & SALAD BAR - \$3.50

DAILY LUNCHEON SPECIAL  
Food to take out for lunches

### DINNER SPECIAL

Daily, from 5:30 till 7

MONDAY THRU THURSDAY ..... at a Special Price  
FRIDAY ..... Bar-B-Q Country Style Ribs  
SATURDAY ..... Prime Rib (above average cut)

SUNDAY, AUG. 31 - 2 p.m. till 7

### STEAK SPECIAL

TOP SPORTS EVENTS on BIG SCREEN TV  
LIVE BAND FRIDAY & SATURDAY

CATERING - Wedding Graduation Business Meetings

### WOLVERINE Food & Spirits

W. Old US-12 & M-52  
Chelsea

(313) 475-9014

### Births

A daughter, Sarah Elizabeth, July 12, to Katherine M. Stepp of Chelsea. Maternal grandparents are Thomas and Barbara Stepp of Chelsea.

A son, Bradley John, Saturday, Aug. 23 to John and Sally Hinderer of Jackson. Paternal grandparents are Walter and Lucille Hinderer of Manchester. Maternal grandparents are James and Shirley Gaken of Chelsea.

A son, Max Robert, Sunday, Aug. 10 to John and Pat Hepburn of Chelsea. Maternal grandparents are Robert and Esther Ishister of Albuquerque, N. Mex. Paternal grandparents are Max and Marjorie Hepburn of Chelsea. Baby Max has a two-year-old sister, Samantha.

A son, Jacob Charles, Thursday, Aug. 14 to Marcia and Denny Walz of Grass Lake. Grandparents are Paul and Loretta Beal of Stockbridge, formerly of Chelsea, and Duane and Maryann Walz of Munith. Great-grandparents are Mary Beal of Chelsea, Freida Neilly of Ft. Myers, Fla., Mrs. Harold Walz of Munith and Mr. and Mrs. Fred Klunk, Sr. of Chelsea.

### Fire Destroys Motor Home

A motor home belonging to a Georgia man was destroyed by fire Monday night after an unattended soldering torch ignited curtains in the vehicle.

According to Chelsea firemen, the man, John Jarvis, was visiting his brother at 12850 Trist Rd. in Jackson county. They said Jarvis was working on a soldering project in the home, put down the torch, and when he returned he found the curtains on fire.

No one was hurt in the blaze, although the home was completely destroyed. It was completely engulfed in flames by the time firefighters arrived on the scene.

No further details were available at press time.

### Spray Painter Vandalizes Church

Christian Fellowship Church, 337 Wilkinson St., was vandalized by someone with spray paint on Sunday, Aug. 24.

Chelsea police said the words, "Preacherman your a liar rape rape" was written on a wall.

The incident was reported by Pastor Gene Hanson. It is still under investigation.

Don't forget to renew your Chelsea Standard subscription!

### FOR Remodeling & Custom Homes

as their finest

COMMERCIAL

RESIDENTIAL



**SOLAR**  
CONSTRUCTION  
& HOME IMPROVEMENT CO.



ANN ARBOR

JACKSON

313 662-9696

317 788-8192

**CLEAN-UP WITH LAWN-BOY**  
SAVE UP TO \$100  
Now clean-up savings on a Lawn-Boy mower during the fall Clean-up With Lawn-Boy Sale. It's your chance to get Lawn-Boy quality and dependability while you bag savings up to \$100. For a limited time only.

#### MODEL R8242 AE

21" self-propelled  
with electric start and bag  
REG. .... \$569.95  
SALE .... \$469.95  
SAVE .... \$100.00

#### MODEL 8038

21" self-propelled with bag.  
REG. .... \$399.95  
SALE .... \$319.95  
SAVE .... \$ 80.00

#### MODEL 7035

21" push mower with bag.  
REG. .... \$299.95  
SALE .... \$239.95  
SAVE .... \$ 60.00

ALL LAWN-BOY MODELS ON SALE!

## VILLAGE LAWN & GARDEN CENTER

120 S. Main, Chelsea

Ph. 475-3313

**PALMER** FORD MERCURY  
Chelsea's Oldest Ford Dealer  
Open MON.-THURS. 9-5, SAT. 1 P.M. • SERVICE OPEN SATURDAY, TOO.  
CHELSEA  
Just minutes away, I-4 to M-42 North 1 1/2 miles downtown 475-1301

NO. 6C318	1986 TEMPO GL 4 DOOR - 2.3 L HSC EFI ENGINE, 5 speed manual transmission, luxury sound package, digital clock, body side moldings, P. S., rear window defroster. LIST: \$8274.00. INVOICE: \$7604.28. YOUR COST: \$7604.28 *
NO. 6C447	1986 ESCORT 2 DOOR - 4 speed manual transmission, P. S., dual elec. outside mirrors, tinted glass, A. C. elec. digital clock, overhead console, rear defrost, AM/FM. LIST: \$8831.00. INVOICE: \$7459.68. YOUR COST: \$7459.68 *
NO. 6C458	1986 THUNDERBIRD TURBO COUPE 2.3 L EFI Turbo engine, 5 speed manual transmission, traction lock axle, speed tilt, power seat 6 locks, A/C, AM/FM with cassette. LIST: \$17007.00. INVOICE: \$13830.72. YOUR COST: \$13830.72 *
NO. 6C450	1986 CROWN VICTORIA LX 4 DOOR - power steering, brakes, lock, windows, driver's seat, LOADED. LIST: \$17082.00. INVOICE: \$14404.04. YOUR COST: \$14404.04 *

### OUR COST — YOUR PRICE

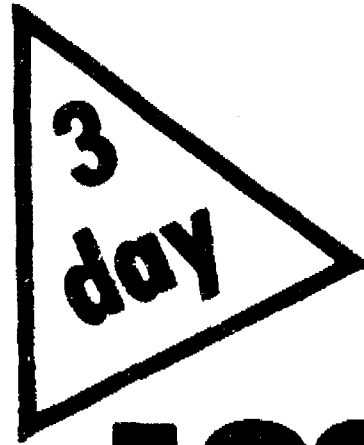
NO. 6T126	1986 F150 4x2 - 4.9 L 300 CID 6 cylinder engine, 3 speed manual transmission, heavy duty battery, optional ratio 4xL6, bright low mount swing away mirrors. LIST: \$9716.92. INVOICE: \$8014.71. YOUR COST: \$8014.71 *
NO. 6T360	1986 RANGER 4x4 SUPERCAB - 2.9 L V-6 EFI, 5 speed overdrive, STX trim, AM/FM radio with cassette, A/C, sliding rear window, rear pump seat handling package. LIST: \$14043.00. INVOICE: \$11689.86. YOUR COST: \$11689.86 *
NO. 6C279	1986 BRONCO II 2.9 L V-6 EFI Auto Trans., outside spare, A. C., privacy glass, speed control, tilt wheel, dealer installed ocean straps. LIST: \$14,874.00. INVOICE: \$13,427.47. YOUR COST: \$13,427.47 *

**\$SAVE:**

TAURUS -- 15 Available  
SABLE -- 3 IN STOCK\*\*  
AEROSTAR WAGON -- 6 IN STOCK\*\*

## PALMER PRICED

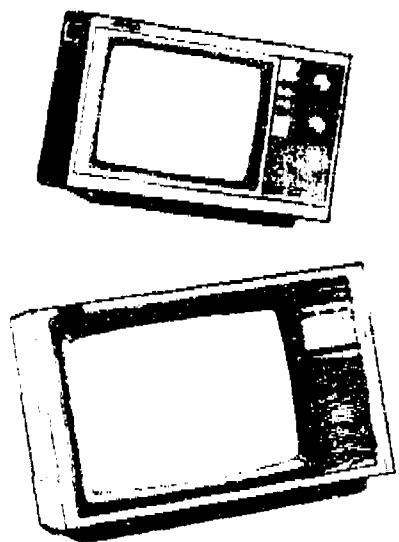
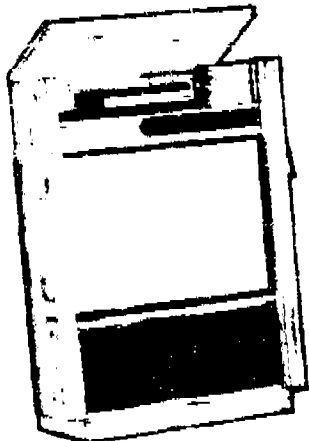
\*MSRP. Excludes tax. The actual price includes advertising, labor, on assessments and dealer fees. \*\*In stock as of 8/24/86. Subject to change without notice. Dealer not responsible for errors or omissions.



# MAGNAVOX

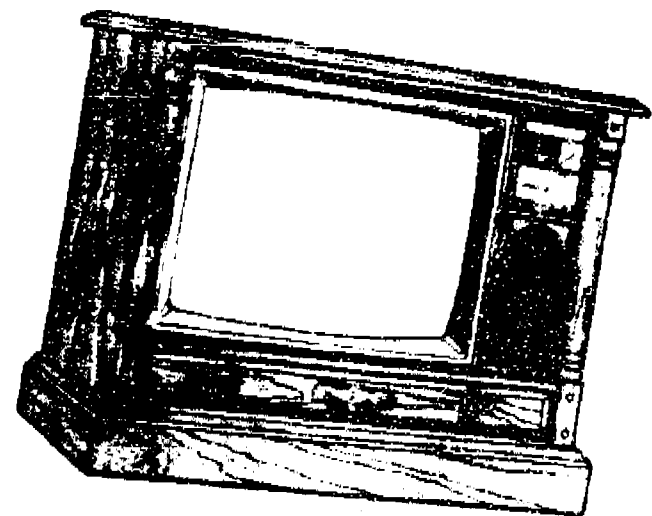
## 1986 CLOSEOUT SALE

### on all Home Entertainment Products!



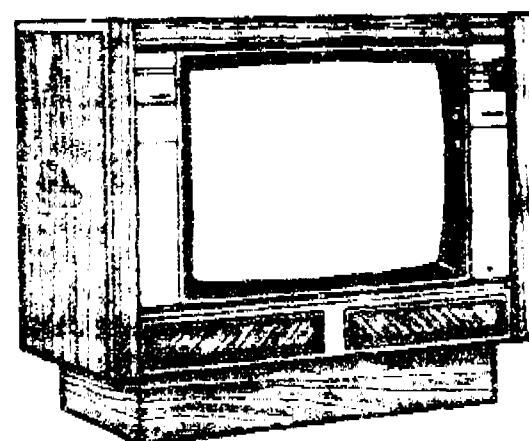
Prices have been drastically reduced on all prior year merchandise for quick sale. Big Savings on all TV's - VCR's - Widescreens.

We must make room for new merchandise. Many items at or below dealer cost.



Shop early for best selection!

	WAS	NOW	SAVE
13" COLOR PORTABLE...	\$259	\$199	\$60
13" ELECTRONIC TUNING...	\$299	\$219	\$70
13" REMOTE .....	\$349	\$249	\$100
19" REMOTE .....	\$499	\$349	\$150
19" STEREO REMOTE.....	\$649	\$499	\$150
19" MONITOR.....	\$699	\$449	\$150
19" STEREO (Top-of-Line)...	\$899	\$519	\$279
25" TABLE MODEL.....	\$649	\$449	\$200
25" CONSOLE.....	\$539	\$399	\$140
25" REMOTE .....	\$749	\$549	\$200
25" DELUXE CONSOLE... STEREO-REMOTE, WITH DOORS	\$1,299	\$849	\$450
37" WIDESCREEN .....	\$1,999	\$1,599	\$400
37" WIDESCREEN .....	\$2,599	\$1,999	\$600
2 HEAD VCR..... WITH HI-FI AUDIO	\$699	\$499	\$200



Our Most Popular TV  
**25" STEREO**  
**With Remote**  
List \$899  
SAVE \$200  
**Only \$699<sup>95</sup>**



BLANK  
**VIDEO TAPE**  
Reg. \$5  
**Only \$4<sup>88</sup> EA.**  
-or-  
**BOX OF 10 TAPES**  
**\$45<sup>00</sup>**  
LIMIT 1 BOX

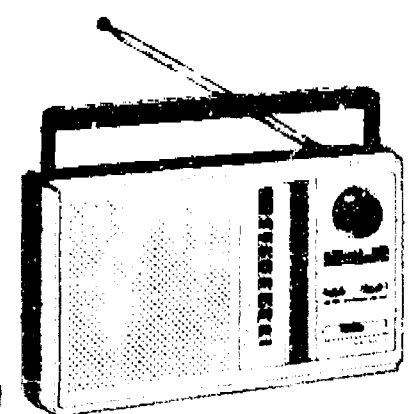
### VHS Movie Rentals

**\$1<sup>92</sup>** per day  
**NEW \$3<sup>85</sup>** per day  
CLUB MEMBER  
NON-CLUB MEMBER  
NO DEPOSIT!

**JOIN OUR CLUB**  
LIFETIME CLUB MEMBERSHIP  
Reg. \$37<sup>50</sup>  
**ONLY \$29<sup>95</sup>**  
Over 1,000 Movies To Choose

### AM/FM PORTABLE RADIO

AC-DC  
Reg. \$24<sup>95</sup>  
**ONLY \$12<sup>50</sup>**



ALL SALE MERCHANDISE LIMITED TO QUANTITIES IN STOCK  
Some New in Boxes. Some Floor Samples. Some Demo's.  
All With Full Warranty!  
**QUANTITIES ARE LIMITED — SHOP EARLY!**  
FIRST COME-FIRST SERVE  
NO LAYAWAYS OR CHARGE SALES

First of America "Home Improvement Loan Account" Financing



# HEYDLAUFF'S

113 N. MAIN ST., CHELSEA



PHONE 475-1221

#### SALE HOURS

Thurs., 28th... 8:30-5:30  
Fri., 29th... 8:30-5:30  
Sat., 30th... 8:30-4:00